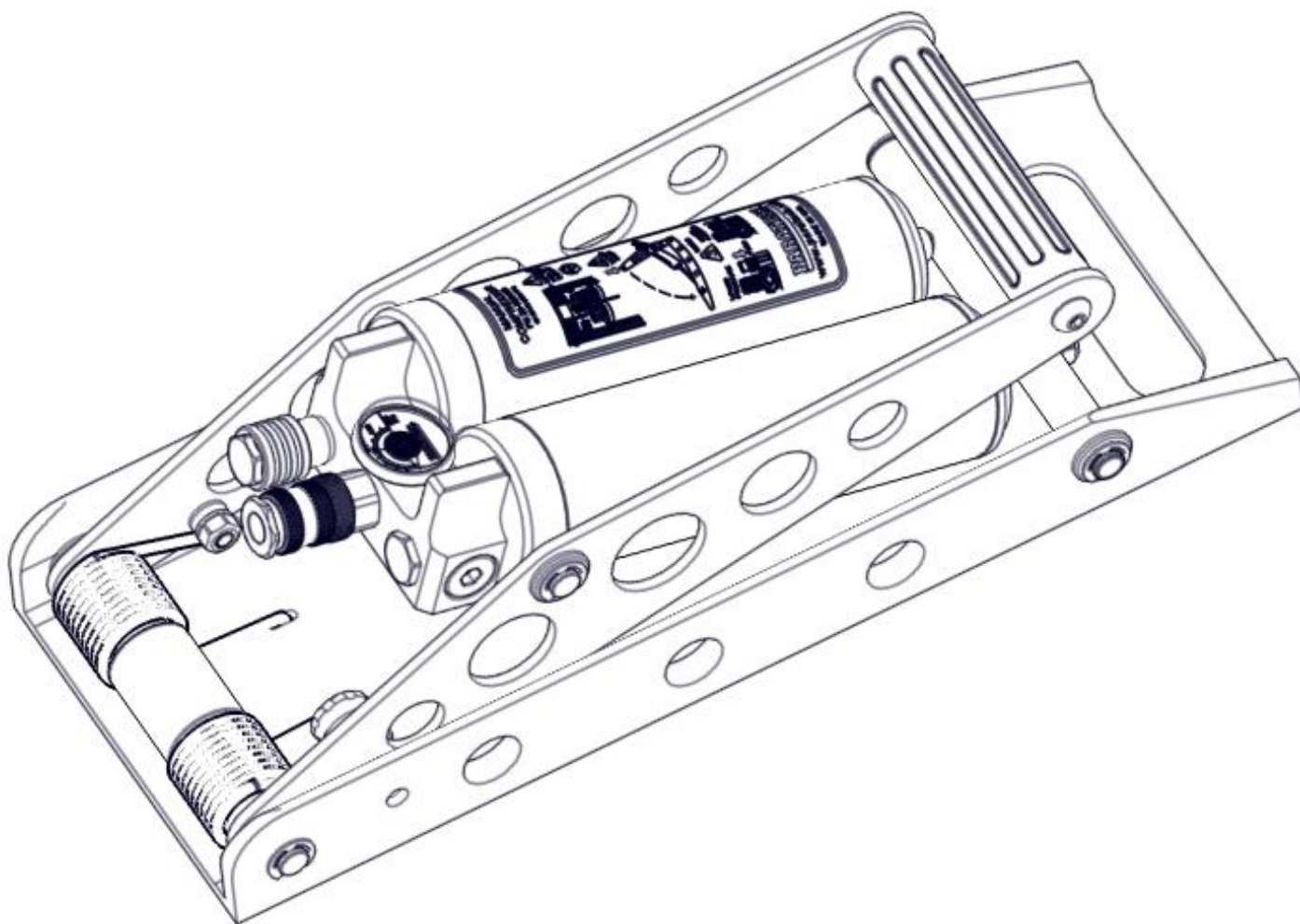


## OPERATION MANUAL FOR 800cc MANUAL COMPRESSOR



**22 OCT 2013**  
**PN 22-800409**



## LIST OF EFFECTIVE PAGES

Date of original pages is:

Original . . . Change . . . 0 . . . 10 February 2010

Total number of pages in this publication is 12 consisting of the following:

Page No.	*Change No.
Title and A Pages	0
Validation Certificate	0
Change Record	0
Change Record-2 blank	0
Page 1-2	1
Page 3 (blank)	1
Page 4-7	1

\*Zero in this column indicates an original page.

# VALIDATION CERTIFICATE

**TECHNICAL MANUAL TITLE**

OPERATION MANUAL FOR 800cc MANUAL COMPRESSOR

**TECHNICAL MANUAL NUMBER**

PN 22-800409

**DATE**

22 October 2013

**CONTRACT/NO.****I-VALIDATION**

Except as stated in II, the technical manual identified above has been satisfactorily validated in accordance with all requirements of the applicable contract. The technical manual is hereby certified to be accurate and complete, and the information, instructions, text, and illustrations conform in all respects to the applicable general and detailed specifications.

**II - EXCEPTIONS****EXCEPTIONS**

NONE

**AUTHORIZED BY**

**Ken Nielsen**

Chief Operating Officer

Paratech Incorporated  
1025 Lambrecht Road  
Frankfort, Illinois 60423-7000

**SIGNATURE OF PUBLICATIONS QUALITY ASSURANCE OFFICER****SIGNATURE ON FILE**

QAP20/002/B

**DATE**

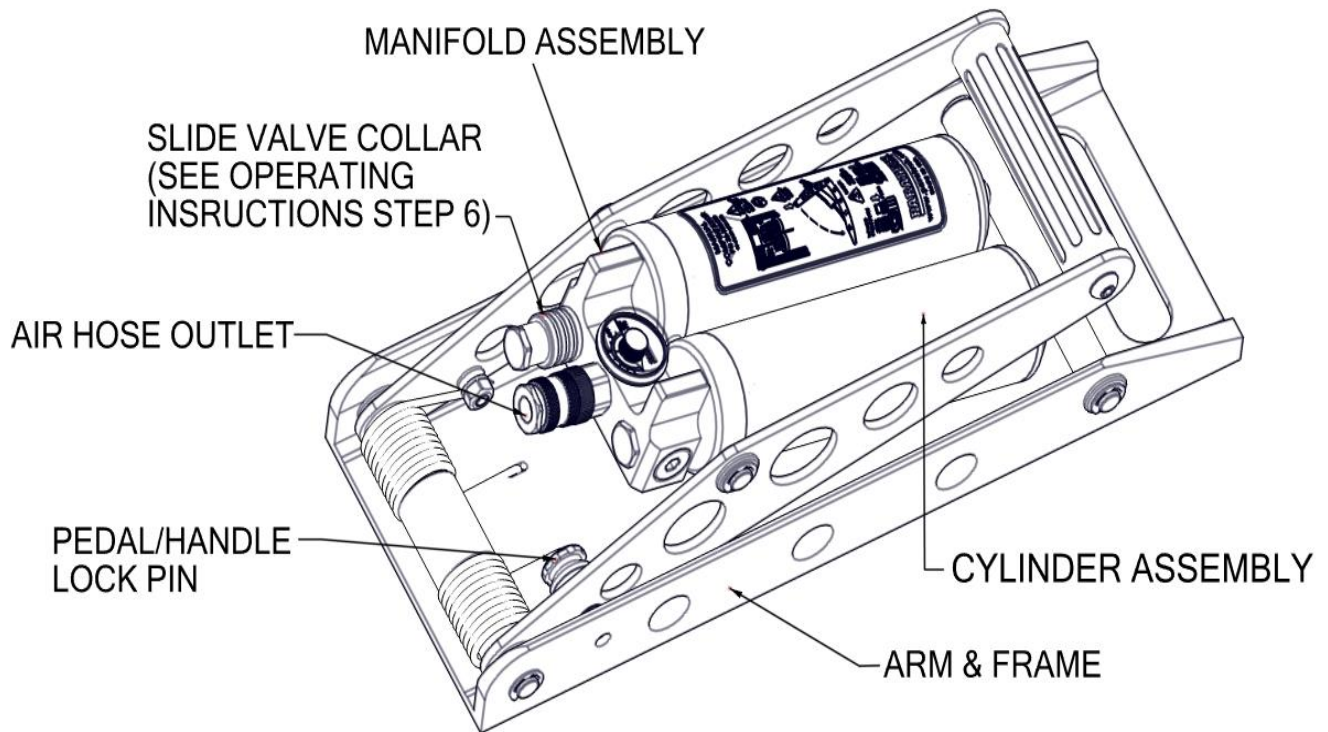
### Change Record

Change No.	Date	Title or Brief Description	Signature of Validating Officer
1	22 OCT 2013	Added New Manifold Assembly, Page Numbers Showing Label on Assembly	SIGNATURE ON FILE



# COMPONENT DESCRIPTION

800cc MANUAL  
COMPRESSOR PN 22-800400



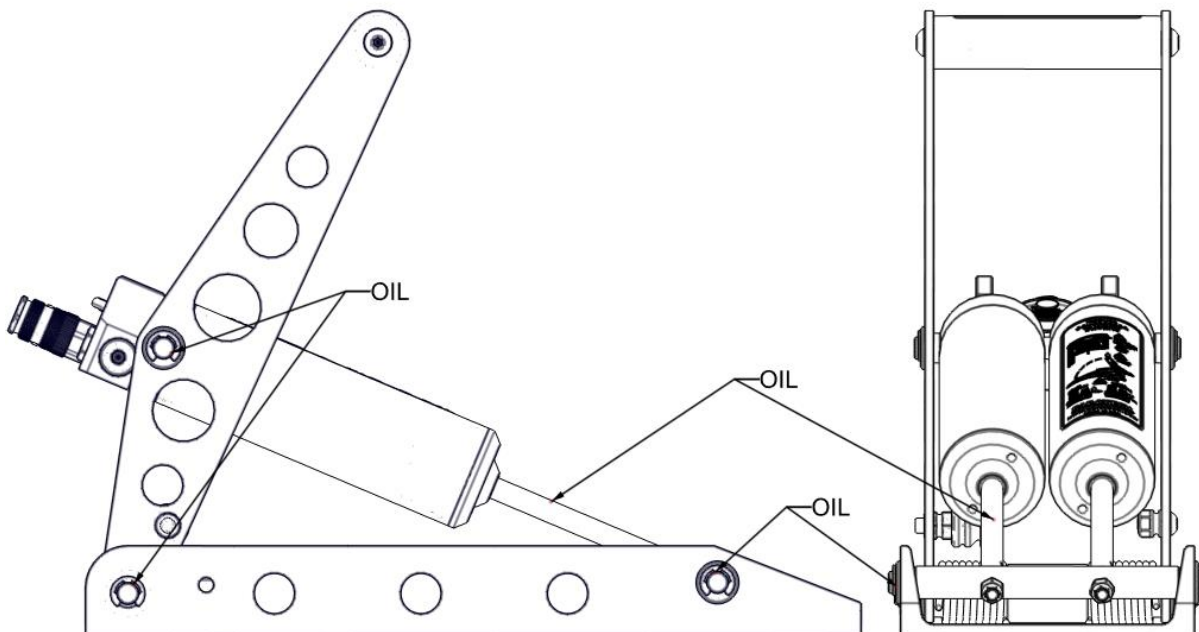
# OPERATING INSTRUCTIONS

## MANUAL AIR COMPRESSOR

PN 22-800400

1. PLACE THE COMPRESOR ON A FIRM LEVEL SURFACE.
2. RELEASE THE LOCK PIN TO ALLOW THE PEDAL (HANDLE) TO EXTEND TO THE UPSTROKE POSITION.
3. CONNECT AN AIR HOSE FROM THE EQUIPMENT TO BE INFLATED OR PRESSURIZED TO THE OUTLET COUPLING ON THE MANUAL COMPRESSOR
4. OPEN THE OPERATING VALVE ON THE EQUIPMENT TO BE INFLATED OR PRESSURIZED
5. DEPRESS AND RELEASE THE FOOT PEDAL (HANDLE) TO SUPPLY AIR TO THE CONNECTED EQUIPMENT. THE FOOT PEDAL IS SPRING LOADED AND WILL EXTEND TO THE UP POSITION WHEN RELEASED.
6. AS THE PRESSURE INCREASES, THE FORCE NEEDED TO DEPRESS THE FOOT PEDAL WILL ALSO INCREASE. WHEN THIS FORCE BECOMES TOO GREAT, IT IS TIME TO DISCONNECT ONE STAGE OF THE COMPRESSOR. TO DO SO, SLIDE THE SECOND STAGE VALVE COLLAR FORWARD TO DISCONNECT THE STAGE. NOW CONTINUE OPERATING THE FOOT PEDAL AS BEFORE, PRESSURE WILL CONTINUE TO INCREASE WITH MUCH LESS RESISTANCE TO THE OPERATOR.
7. WHEN OPERATION IS COMPLETED, CLOSE THE OPERATING VALVE ON THE PRESSURIZED EQUIPMENT AND DISCONNECT THE HOSE FROM THE OULET COUPLING.

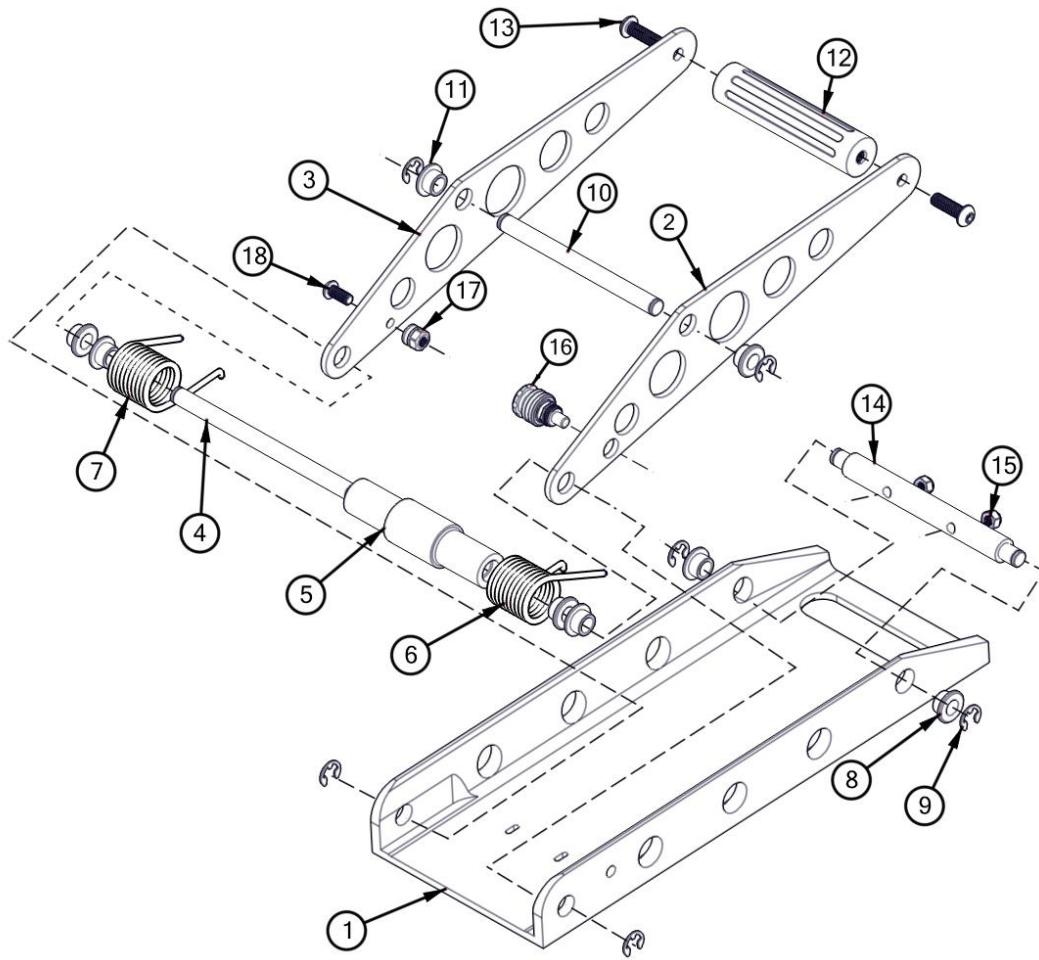
**CAUTION: WHILE OPERATING THE MANUAL AIR COMPRESSOR BE SURE TO USE ALL OPERATIONAL AND SAFETY DEVICES REQUIRED FOR THE EQUIPMENT BEING INFLATED OR PRESSURIZED.**







## FRAME COMPONENTS

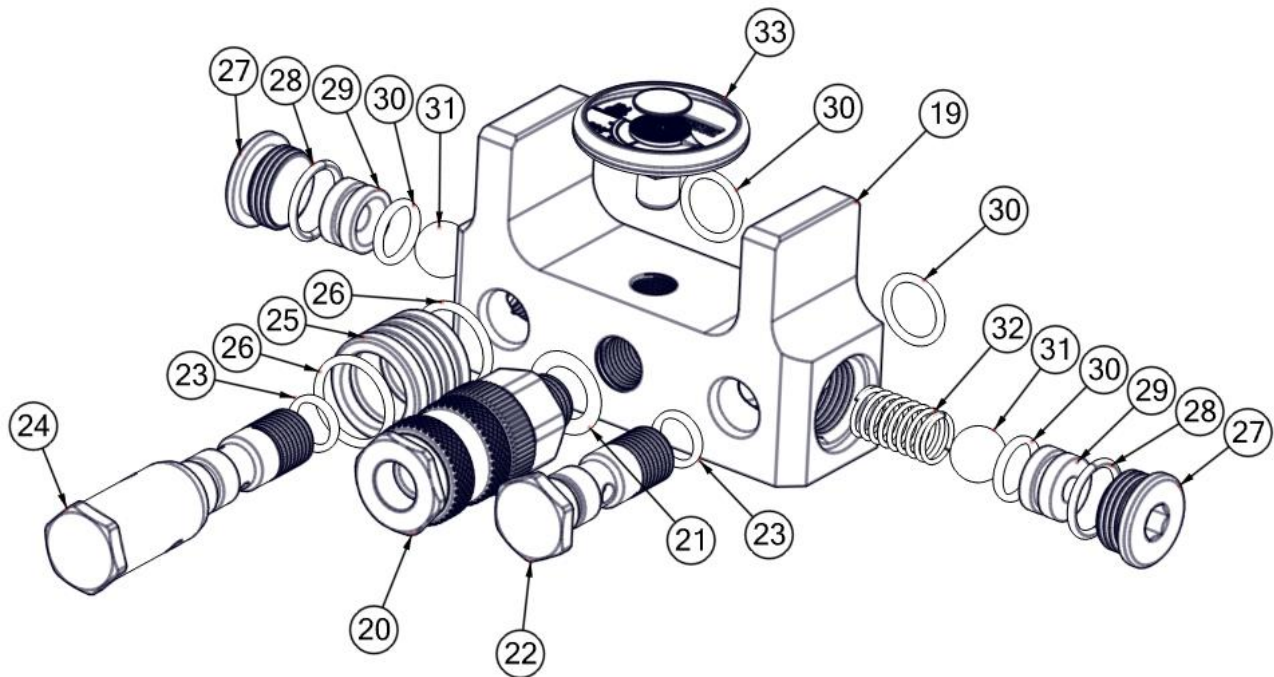


## PN 22-800400 PARTS LIST

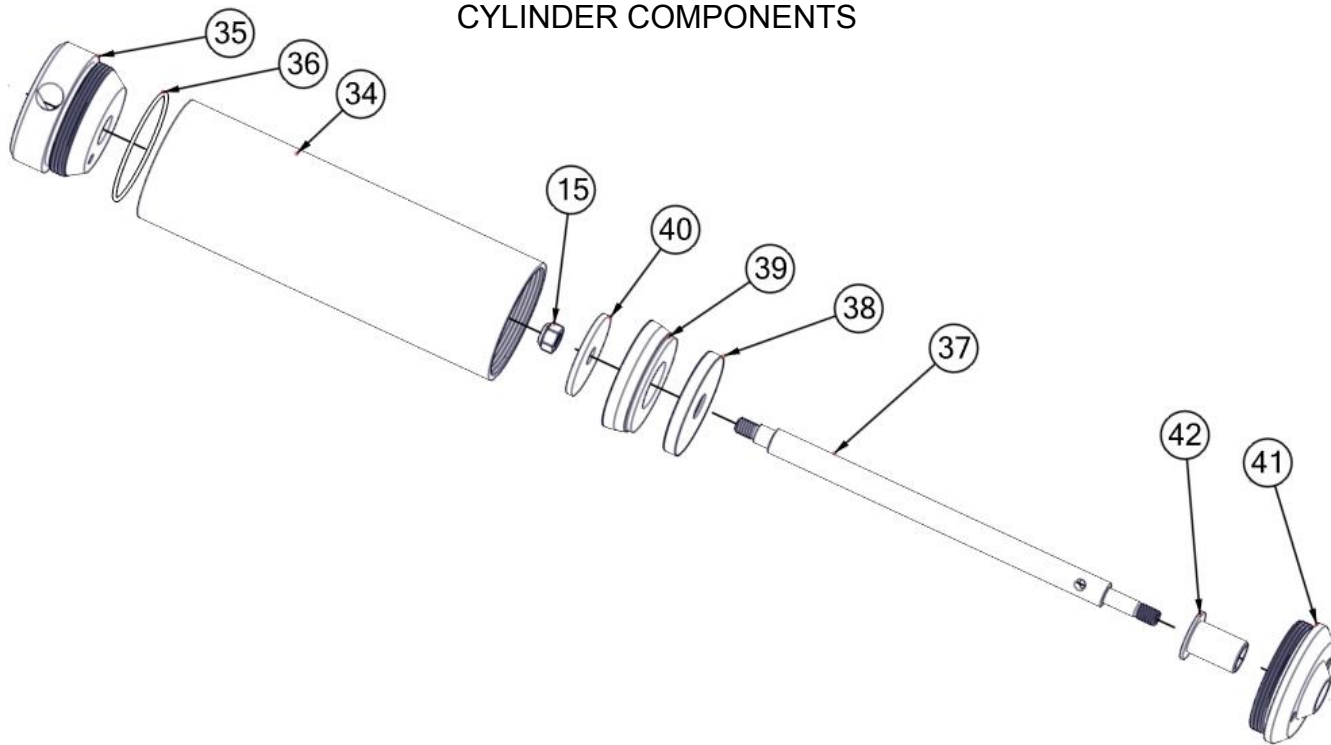
### FRAME COMPONENTS

ITEM	PART NUMBER	DISCRIPTION	QTY
1	22-015730	BASE CHANNEL, FOOT PUMP	1
2	22-015742L	ARM, LEFT, INFLATOR	1
3	22-015742	ARM - RIGHT, INFLATOR	1
4	22-015774	SHAFT, ARM/FRAME, INFLATOR	1
5	22-015746	SPACER TUBE, INFLATOR	1
6	22-015749	TORSION SPRING LEFT H.	1
7	22-015748	TORSION SPRING RIGHT H.	1
8	22-015738	BUSHING - BASE, INFLATOR	2
9	22-015778	RET. E-RING FOR 1/2" SHAFT	6
10	22-015776	SHAFT, ARM/CYL. INFLATOR	1
11	22-015736	BUSHING - ARM, INFLATOR	6
12	22-015744	HANDLE, INFLATOR	1
13	22-550088	SCREW 3/8 BTNHD CAP X 1.25LG	2
14	22-015772	SHAFT, REAR, CYL/FRAME	1
15	22-015716	LOCK NUT 5/16-18 NYL.INS S.S.	2
16	22-796071	LOCK PIN ASSY, PUMP	1
17	22-015735	NUT W/GROOVE, SPRING HOLD	1
18	22-015734	SCREW 5/16-18 BTNHD 3/4"LG SS	1

MANIFOLD COMPONENTS



CYLINDER COMPONENTS



## PN 22-800400 PARTS LIST

### MANIFOLD COMPONENTS

ITEM	PART NUMBER	DISCRIPTION	QTY
19	22-015782	MANIFOLD BODY, INFLATOR	1
20	22-890703	CPLG 1/4"NPSM - OPEN W/SEAL	1
21	22-890703	O-RING AS-109 5/16X.103 BN 70	1
22	22-015784	SCREW, MANIFOLD, INFLATOR	1
23	22-550174	O-RING AS-013 (7/16X.070) BN70	2
24	22-015786	SCREW, SLIDE VALVE	1
25	22-015748	RING, SLIDE VALVE	1
26	22-550180	O-RING AS-018 3/4 X .070 BN 70	2
27	22-890945	PLUG	2
28	22-890946	O-RING AS-016 5/8X.070 BN 70	2
29	22-015792	SEAT FOR BALL, MANFLD INFLATOR	2
30	22-890253	O-RING AS-014 (1/2X.070) BN70	4
31	22-015796	BALL 1/2" NITRILE	2
32	22-015794	SPRING, MANIFOLD, FOOT PUMP	1
33	22-890602	GAUGE 1.4" 200PSI 1/8 BACK MT	1

### CYLINDER COMPONENTS

34	22-015762	CYLINDER TUBE, INFLATOR	2
35	22-015754	FRONT CYL. CAP, INFLATOR	2
36	22-015752	O-RING AS-034(2.125X.070) BN70	2
37	22-015764	PISTON ROD, INFLATOR	2
38	22-015768	BACK UP WASHR, CYL , INFLTR	2
39	22-015770	SEAL 2.25 CUP, INFLATOR	2
40	22-015766	WASHER, PISTON FRONT, INFLATR	2
41	22-015756	REAR CYL. CAP, INFLATOR	2
42	22-015757	BUSHING FOR PISTON ROD	2
15	22-015716	LOCK NUT 5/16-18 NYL.INS S.S.	2
*	22-800400L	LABEL, MANUAL COMPRESSOR	1

\* 22-800400L SHOWN ON PAGES 1 & 2.





## 800cc MANUAL COMPRESSOR LIMITED WARRANTY

Each 800cc **MANUAL COMPRESSOR** or component thereof, manufactured by Paratech Incorporated, has been thoroughly inspected and properly adjusted before shipment to insure the highest quality and the greatest possible reliability.

Paratech Incorporated (hereinafter referred to as "Seller") hereby warrants the 800cc **MANUAL COMPRESSOR** or component thereof to the original retail buyer only against defects in material and workmanship under normal use and service for a period of one year from the date of purchase. This warranty shall constitute the sole warranty of the Seller with respect to the 800cc **MANUAL COMPRESSOR** or component thereof. **THE SELLER HEREBY DISCLAIMS AND EXCLUDES ALL OTHER WARRANTIES, EXPRESSED OR IMPLIED, INCLUDING ANY IMPLIED WARRANTY OR MERCHANTABILITY OR FITNESS FOR A PARTICULAR PURPOSE.** The Seller neither assumes nor authorizes any other person to assume for it any other obligations or liabilities in connection with the sale or use of this product.

Should there be any defects in the material or workmanship of the 800cc **MANUAL COMPRESSOR**, buyer should return the defective product to the factory for inspection with shipping prepaid within one year from the date of purchase. If inspection shows that the 800cc **MANUAL COMPRESSOR** or a component thereof is defective and that such defects were not caused by negligence, misuse, accident or unauthorized service, the product sold hereunder will be repaired or replaced at the option of the Seller, without charge, FOB at the factory, Frankfort, Illinois.

**THIS REMEDY SHALL BE THE EXCLUSIVE REMEDY FOR BREACH OF WARRANTY WITH RESPECT TO THE 800cc MANUAL COMPRESSOR OR COMPONENTS THEREOF. THE SELLER SHALL NOT BE LIABLE FOR INCIDENTAL OR CONSEQUENTIAL DAMAGES RESULTING FROM ANY BREACH OF WARRANTY WITH RESPECT TO THE 800cc MANUAL COMPRESSOR AND COMPONENTS THEREOF FROM ANY DELAY IN THE PERFORMANCE OF THE REMEDY HEREUNDER.**

# **PARATECH®**

Paratech Incorporated  
P.O. Box 1000  
Frankfort, IL 60432 USA

Phone: 815.469.3911  
Fax: 815.469.7748  
[www.paratech.com](http://www.paratech.com)  
E-mail: [paratech@paratech.us](mailto:paratech@paratech.us)