

## RAKER SETS & ACCESSORIES

Paratech offers the necessary accessories to convert our LongShore Struts into a fully deployable raker system that is fast, strong and easy to install. Paratech's innovative Raker accessories and LongShore Struts meet US&R requirements for strength and deployability. The Paratech LongShore System offers unique features and benefits ensuring proven performance every time the system is deployed.

## ABSOLUTE RAKER

Paratech once again sets a new standard, no wood, no pins, no chains...no hassle. The Absolute Raker provides flexibility, functionality and economy. Never worry about wood again—fully deployable in minutes—or easily turn your existing Paratech Raker into an Absolute Raker, with the Standard to Absolute Upgrade Kit. Interoperational with all Paratech Rescue Support Systems, as always.

## 6 FT. /1.8 m ABSOLUTE RAKER SET

Part No.	Description	lb	kg
22-796984	6 ft / 1.8 m Deployable Absolute Raker	795.3 lb	360.7 kg

Part No.	Description	Quantity
22-796180C	Hinged Base 12 w/ Anchor Ring	2
22-796250	Raker Rail Latch	4
22-796258C	Raker Rail	4
22-796290	Raker Junction Base	2
22-796330	Clamp and Clevis	12
22-796342	LongShore Extension 235	7
22-796350	LongShore Adjustable Brace B57	7
22-796356	LongShore Extension 435	2
22-796360	LongShore Strut 610	4
22-796376	LongShore Extension 635	2
22-796469	Raker Rail Splice	2
22-796475	Raker Angle Base	2
22-796656	Rail 4 Latch Holder	1
22-796280	Raker Rail Junction	2

## 8 FT. /2.4 m ABSOLUTE RAKER SET

Part No.	Description	lb	kg
22-796985	8 ft / 2.4 m Deployable Absolute Raker	842.3 lb	382.0 kg

Part No.	Description	Quantity
22-796180C	Hinged Base 12 w/ Anchor Ring	2
22-796250	Raker Rail Latch	4
22-796258B	Raker Rail 4	2
22-796258D	Raker Rail 8	2
22-796290	Raker Junction Base	2
22-796330	Clamp and Clevis	12
22-796342	LongShore Extension 235	5
22-796350	LongShore Adjustable Brace B57	7
22-796356	LongShore Extension 435	2
22-796370	LongShore Strut 812	4
22-796376	LongShore Extension 635	2
22-796469	Raker Rail Splice	2
22-796475	Raker Angle Base	2
22-796656	Rail 4 Latch Holder	1
22-796656	Raker Rail Junction	2



## STANDARD TO ABSOLUTE RAKER UPGRADE KIT

Part No.	Description	lb	kg
22-796983	6 ft / 1.8 m Standard Raker to 6 ft Absolute Raker Upgrade	354.3 lb	160.7 kg

Part No.	Description	Quantity
22-796280	Rail Junction	2
22-796330	Clamp and Clevis	12
22-796342	LongShore Extension 235	5
22-796350	LongShore Adjustable Brace B57	7



## ABSOLUTE FLYING RAKER

Paratech fully mechanical Absolute Flying Raker Sets leave the wood behind. Stronger, faster and easier than wood, the Absolute Flying Raker in 6 ft (1.8 m) or 8 ft (2.4 m) sets, allow rescue teams to build rakers around the rubble pile.

Use the Woodless Flying Raker kit upgrade to upgrade a Standard Flying Raker to an Absolute Woodless Flying Raker. Interoperational with all Paratech Rescue Support Systems, as always.

## 6 FT. /1.8 m ABSOLUTE FLYING RAKER SET

Part No.	Description	lb	kg
<b>22-796984F</b>	<b>6 ft / 1.8 m Absolute Flying Raker Set</b>	<b>535.9 lb</b>	<b>243.1 kg</b>

Part No.	Description	Quantity
22-796180C	Hinged Base 12 w/ Anchor Ring	2
22-796258C	Raker Rail 6	2
22-796330	Clamp and Clevis	12
22-796342	LongShore Extension 235	4
22-796350	LongShore Adjustable Brace B57	5
22-796348	LongShore Adjustable Brace B23	2
22-796356	LongShore Extension 435	2
22-796360	LongShore Strut 610	2
22-796376	LongShore Extension 635	2
22-796475	Raker Angle Base	2
22-796656	Rail 4 Latch Holder	1
22-796250	Raker Rail Latch	4

## 8 FT. /2.4 m ABSOLUTE FLYING RAKER SET

Part No.	Description	lb	kg
<b>22-796985F</b>	<b>8 ft / 2.4 m Absolute Flying Raker Set</b>	<b>574.5 lb</b>	<b>260.6 kg</b>

Part No.	Description	Quantity
22-796180C	Hinged Base 12 w/ Anchor Ring	2
22-796258D	Raker Rail 8	2
22-796330	Clamp and Clevis	12
22-796342	LongShore Extension 235	4
22-796350	LongShore Adjustable Brace B57	5
22-796348	LongShore Adjustable Brace B23	2
22-796356	LongShore Extension 435	2
22-796370	LongShore Strut 812	2
22-796376	LongShore Extension 635	2
22-796475	Raker Angle Base	2
22-796656	Rail 4 Latch Holder	1
22-796250	Raker Rail Latch	4



## WOODLESS FLYING RAKER BRACE KIT

Use this kit to upgrade your 6 ft / 1.8 m Flying Raker to an Absolute Flying Raker

Part No.	Description	lb	kg
<b>22-796487</b>	<b>Woodless Flying Raker Brace Kit 6 ft Absolute Raker Upgrade</b>	<b>231.9 lb</b>	<b>105.2 kg</b>

Part No.	Description	Quantity
22-796330	Clamp and Clevis	10
22-796342	LongShore Extension 235	2
22-796350	LongShore Adjustable Brace B57	5



## 6 ft / 1.8m DEPLOYABLE RAKER SET

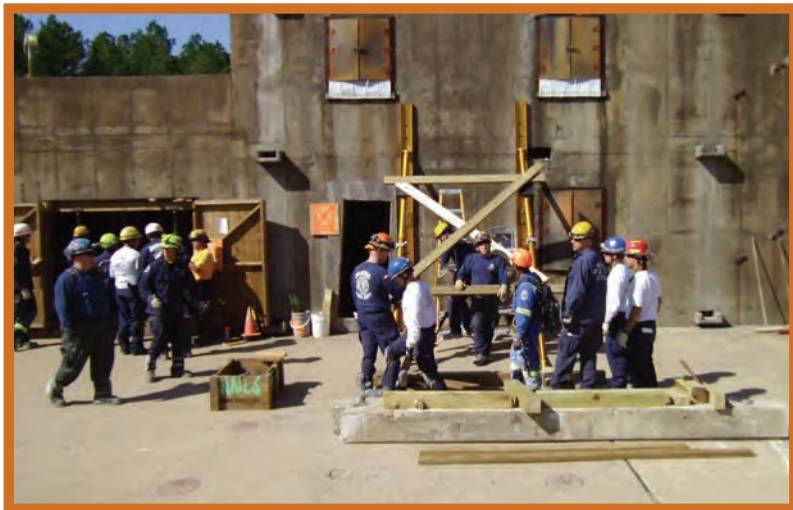
The 6' Deployable Raker Set is part of the US&R System standardized by FEMA for its Urban Search & Rescue operations. The parts create a shoring system that can support most compromised walls or excavations. No part of this kit is longer than 6' which helps for storage and transport of the system. The strength and ease of use for this system makes it the set of choice for your structural/excavation needs.

Set Part No. Net Weight: lb kg

22-796481 US 441.0

22-796481M Metric 200.0

Part No.	Description	Quantity
22-796360	LongShore Strut 610 72 in / 116 cm	4
22-796342	LongShore Extension 235 24 in / 61 cm	2
22-796356	LongShore Extension 435 48 in / 122 cm	2
22-796376	LongShore Extension 635 67 in / 170 cm	2
22-796258C	Raker Rail 6 72 in / 183 cm	4
22-796180C	Hinged Base Plate 12 in / 30.5 cm	2
22-796250	Raker Rail Latch	4
22-796290	Raker Junction Base	2
22-796310	Nailing Pad with Clamp	6
22-796469	Raker Rail Splice	2
22-796475	Raker Angle Base	2
22-796430	Shoring Hammer	4
22-796656	Rail Latch Holder	1



## 8 ft / 2.4m DEPLOYABLE RAKER SET

The 8' Deployable Raker Set is a kit that is designed to support compromised structures and walls. The strength and ease of use of this system makes it the kit of choice for your structural/excavation needs.



Set Part No. Net Weight: lb kg

22-796480 US 488.0

Metric 221.4

Part No.	Description	Quantity
22-796370	LongShore Strut 812 92 in / 147 cm	4
22-796342	LongShore Extension 235 24 in / 61 cm	2
22-796356	LongShore Extension 435 48 in / 122 cm	2
22-796376	LongShore Extension 635 67 in / 170 cm	2
22-796258B	Raker Rail 4 48 in / 122 cm	2
22-796258D	Raker Rail 8 96 in / 244 cm	2
22-796180C	Hinged Base Plate 12 in / 30.5 cm	2
22-796250	Raker Rail Latch	4
22-796290	Raker Junction	2
22-796310	Nailing Pad with Clamp	6
22-796469	Raker Rail Splice	2
22-796475	Raker Angle Base	2
22-796430	Shoring Hammer	4
22-796656	Rail Latch Holder	1



## RAKER MIDPOINT BRACE KIT

The mid point brace kit can be utilized with the 6' & 8' Raker Sets and will greatly increase the strength of your Raker Kit. Adding this item to your Raker Set will guarantee you have the strongest raker.

Kit Part No. Net Weight: lb kg

22-796484 97.6 44.3

Part No.	Description	Quantity
22-796350	Adjustable Brace Model B57	2
22-796250	Raker Rail Junction	2
22-796330	Clamp 335 & Clevis	2