

MaxiForce Air Lifting Bags

Master Control Kit



1 - Master Control Kit Case
22-890322



1 - Air Hose
3/8 in / 9.5 mm dia.
x 16 ft / 5 m Black
22-890513



1 - Air Hose
3/8 in / 9.5 mm dia.
x 16 ft / 5 m Blue
22-890514



1 - Air Hose
3/8 in / 9.5 mm dia.
x 16 ft / 5 m Yellow
22-890515



1 - Air Hose
3/8 in / 9.5 mm dia.
x 16 ft / 5 m Red
22-890516



1 - Air Hose
3/8 in / 9.5 mm dia.
x 16 ft / 5 m Green
22-890517

1 - Dual Deadman Bag Controller G3
22-890900G3-150



1 - Preset Air Lifting Bag Regulator
22-895401G3



4 - Inline Relief Valve 22-890490-150

1 - Paratech Nipple and Locking Tire Chuck
22-890731



2 - "Y" with 2 Couplings and 1 Nipple
22-890736



1 - Shutoff Adapter Nipple with Industrial Nipple with Valve
22-890732



1 - Shutoff Adapter Nipple with Twist Lock
22-890749



2 - Paratech Nipple
1/4 in / 0.6 cm (NPT F)
22-890682



4 - Paratech Nipple for ALB 3/8-24 LH THD
22-890686

Quantity	Part No.	Description
1	22-890900G3-150	Dual Deadman Safety Relief & Control Valve
1	22-895401G3	Preset Air Lifting Bag Regulator 215 PSI CGS (14.8 bar) 5,500-0 psi / 379.2 -0 bar CGA 347/346 Inlet
4	22-890490-150	Inline Relief Valve
2	22-890682	Paratech Nipple 1/4 in / 0.6 cm NPT F
4	22-890686	Paratech Nipple for ALB 3/8-24 LH THD
1	22-890731	Paratech Nipple and Locking Tire Chuck

Quantity	Part No.	Description
1	22-890732	Shutoff Adapter Nipple with Industrial Nipple with Valve
2	22-890736	"Y" with 2 Couplings and 1 Nipple
1	22-890749	Shutoff Adapter Nipple with Twist Lock
1	22-890513	Air Hose 3/8 in / 9.5 mm dia. x 16 ft / 5 m BLACK
1	22-890514	Air Hose 3/8 in / 9.5 mm dia. x 16 ft / 5 m BLUE
1	22-890515	Air Hose 3/8 in / 9.5 mm dia. x 16 ft / 5 m YELLOW
1	22-890516	Air Hose 3/8 in / 9.5 mm dia. x 16 ft / 5 m RED
1	22-890517	Air Hose 3/8 in / 9.5 mm dia. x 16 ft / 5 m GREEN
1	22-890322	Master Control Kit Case

MaxiForce Air Lifting Bags

Basic Control Kit

1 - Dual Deadman
Bag Controller G3
22-890900G3-150



1 - Preset Air Lifting Bag Regulator
22-895401G3



Quantity	Part No.	Description
1	22-890900G3-150	Dual Deadman Safety Relief & Control Valve
1	22-895401G3	Preset Air Lifting Bag Regulator 215 PSI CGS (14.8 bar) 5,500 – 0 psi / 379.2 – 0 bar CGA 347/346 Inlet

Part No.	Net Weight:	lb	kg
22-890351G2-150	US	21.0	9.5
22-890351G2D-10	Metric		



1 - Air Hose
3/8 in / 9.5 mm dia.
x 16 ft / 5 m Black
22-890513



1 - Air Hose
3/8 in / 9.5 mm dia.
x 16 ft / 5 m Yellow
22-890515



1 - Air Hose
3/8 in / 9.5 mm dia.
x 16 ft / 5 m Red
22-890516

Quantity	Part No.	Description
1	22-890513	Air Hose 3/8 in / 9.5 mm dia. x 16 ft / 5 m BLACK
1	22-890515	Air Hose 3/8 in / 9.5 mm dia. x 16 ft / 5 m YELLOW
1	22-890516	Air Hose 3/8 in / 9.5 mm dia. x 16 ft / 5 m RED

Vehicle Maintenance Kit

KPI-44



KPI-44



1 - Dual Deadman
Bag Controller G3
22-890900G3-150



2 - Inline Relief Valve
22-890490-150



1 - Air Hose
3/8 in / 9.5 mm dia.
x 16 ft / 5 m Black
22-890513



1 - Air Hose
3/8 in / 9.5 mm dia.
x 16 ft / 5 m Yellow
22-890515



1 - Air Hose
3/8 in / 9.5 mm dia.
x 16 ft / 5 m Red
22-890516

Quantity	Part No.	Model	Dimensions in	Dimensions mm	Max Lifting Capacity US Ton / Met Ton	Max Lifting Height in / mm	WEIGHT lb / kg
2	22-888190G2	KPI-44	28 in x 28 in x 7/8 in	711 mm x 711 mm x 22 mm	52.7 / 47.8	15.3 / 388	30.0 / 13.6

Quantity	Part No.	Description
2	22-890490-150	Inline Relief Valve
1	22-890900G3-150	Dual Deadman Safety Relief & Control Valve

Quantity	Part No.	Description
1	22-890513	Air Hose 3/8 in / 9.5 mm dia. x 16 ft / 5 m BLACK
1	22-890515	Air Hose 3/8 in / 9.5 mm dia. x 16 ft / 5 m YELLOW
1	22-890516	Air Hose 3/8 in / 9.5 mm dia. x 16 ft / 5 m RED

MaxiForce Air Lifting Bags

Paratech 24 Pneumatic Component & Adapter Kit



Part No.	Net Weight: lb	kg
22-890729	15.0	6.8

Quantity	Part No.	Description
1	22-890732	Paratech Nipple & Industrial Nipple with Valve
1	22-890734	Paratech Nipple & Glad Hand
1	22-890749	Paratech Nipple & Industrial Twist Lock with Valve
1	22-890731	Paratech Nipple & Locking Tire Chuck
1	22-890738	Paratech Nipple & 12 in / 30.5 cm Hose with Clamp
1	22-000905	Storage Case
1	22-890735	"Y" with 2 Paratech Couplings & 1/4 in NPT F
1	22-890736	"Y" with 2 Paratech Couplings & MAXIFORCE® Nipple
1	22-890740	"Y" with 3 Paratech Couplings
1	22-890730	Paratech Double Male Nipple
1	22-890737	Paratech Nipple and Tire Valve Inflator
1	22-890700V	Paratech Coupling with 3/8 in / 1 cm Hose Stem with Ferrule (consists of 22-890700A & 22-890624)
1	22-890691 & 22-890624	Paratech Nipple with 3/8 in / 1 cm Hose Stem with Ferrule
1	22-890721AV	Paratech Coupling with 1/4 in NPSM with "O" Ring
1	22-890686	Paratech Nipple for ALB 3/8-24 LH THD
1	22-890681	Paratech Nipple with 1/4 in NPT M
1	22-890710V	Paratech Coupling with 1/2 in NPT M
1	22-890684	Paratech Nipple with 1/2 in NPT M
1	22-890711V	Paratech Coupling with 1/4 in NPT F
1	22-890682	Paratech Nipple with 1/4 in NPT F
1	22-890720V	Paratech Coupling with 1/2 in NPT F
1	22-890685	Paratech Nipple with 1/2 in NPT F
1	22-890683	Paratech Nipple with 1/8 in NPT M

Storage Case



MaxiForce® Air Lifting Bag Safety Icons



MaxiForce Air Lifting Bags

MaxiForce Accessories



**Completely Compatible with
All Older MaxiForce® Air Lifting
Bags and Control Equipment**

**DUAL DEADMAN
BAG CONTROLLER G3**
Net Weight: 3.7lb 1.7kg
Part No. 22-890900G3-150



**PRESET AIR LIFTING BAG
REGULATOR**
215 PSI CGA (14.8 BAR)
Piston Type 5,500-0 psi /
379.2-0 bar CGA 347/346 inlet
Net Weight: 3.6lb 1.6kg
Part No. 22-895401G3



PRESSURE REGULATOR
215 PSI DIN (14.8 BAR)
Piston Type Euro 5,500-0 psi /
379.2-0 bar DIN
Net Weight: 3.8lb 1.7kg
Part No. 22-895401DG3



**INLINE RELIEF
VALVE FOR G2**
165 psi / 11.4 bar
Designed to relieve over-
pressurization and allow a lift bag
to remain inflated under a load.
This valve will relieve excess
pressure from an inflated
bag caused by load shifts or
temperature changes.
Now with safety coupling.
Net Weight: 1.0lb 0.4kg
Part No. 22-890490-150



INLINE RELIEF VALVE
135 psi / 9.3 bar
Designed to relieve over-
pressurization and allow a lift bag
to remain inflated under a load. This
is not simply a shut off valve. This valve
will relieve excess pressure from an
inflated bag caused by load shifts or
temperature changes.
Net Weight: 1.0lb 0.4kg
Part No. 22-890490

**MANUAL AIR
COMPRESSOR**
2 STAGE - FOOT/HAND
Net Weight: 14.7lb 6.7kg
Part No. 22-800400



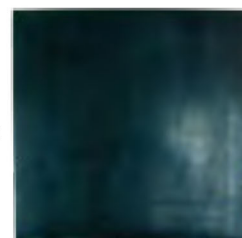
**MASTER CONTROL
PACKAGE CUSTOM CASE
ONLY**

Part No. 22-890322



**STORAGE
CASE**

Part No. 22-000905



NEOPRENE SHEET
20 in x 20 in x 1/8 in /
50.8 cm x 50.8 cm x .032 cm

Part No. 22-890466



MaxiForce Air Lifting Bags

MaxiForce Accessories



Ferrule for Paratech Nipple with 3/8 in / 1 cm hose stem
Part No. 22-890624



Nipple with 1/4 in NPT M fits MAXIFORCE® and Vetter
Part No. 22-890667



Locking Nipple with 1/8 in NPT M fits MAXIFORCE® and Vetter
Part No. 22-890668



Paratech Lock Nipple with 3/8 in / 1 cm hose thread
Part No. 22-890672



2 - Paratech Nipple for ALB 3/8-24 LH THD
Part No. 22-890686



Paratech Nipple with 1/4 in NPT F
Part No. 22-890682



Paratech Nipple with 1/8 in NPT M
Part No. 22-890683



Paratech Nipple with 1/2 in NPT M
Part No. 22-890684



Paratech Nipple with 1/2 in NPT F
Part No. 22-890685



Paratech Nipple with 3/8 in / 1 cm hose stem
Part No. 22-890691



Paratech/Vetter Nipple 3/8 in / 24 LH
Part No. 22-890652



Paratech Coupling with 3/8 in / 0.4 cm hose stem w/Ferrule - consists of 22-890700A & 22-890624
Part No. 22-890700V



Paratech Coupling with 3/8 in / 1 cm hose stem
Part No. 22-890700AV



Paratech Coupling with 1/2 in NPT M
Part No. 22-890710V



Paratech Coupling with 1/4 in NPT F
Part No. 22-890711



Paratech Coupling with 1/2 in NPT F
Part No. 22-890720



Paratech Coupling with 1/4 in NPSM with 'O' Ring
Part No. 22-890721A



Paratech Coupling with 1/4 in NPSM open
Part No. 22-890703V



Paratech Double Male Nipple
Part No. 22-890730



Paratech Nipple Industrial Nipple with Valve
Part No. 22-890732



Paratech Nipple and Glad Hand
Part No. 22-890734



'Y' with 2 Paratech Couplings and 1/4 in NPT F
Part No. 22-890735



'Y' with 2 Paratech Couplings and MAXIFORCE® Nipple
Part No. 22-890736



'Y' with 3 Paratech Couplings
Part No. 22-890740



Paratech Nipple and Tire Valve Inflator
Part No. 22-890737



Paratech Nipple and Locking Tire Chuck
Part No. 22-890731



Paratech Nipple and 12 in / 30.5 cm hose with clamp
Part No. 22-890738



Paratech Nipple and Industrial Twist Lock with Valve
Part No. 22-890749



Industrial Coupling 1/4 in NPT F
Part No. 22-890751



Industrial Coupling 1/4 in NPT M
Part No. 22-890752



Industrial Nipple 1/8 in NPT M
Part No. 22-890760



Industrial Nipple 1/4 in NPT M
Part No. 22-890761



Industrial Nipple 3/8 in NPT M
Part No. 22-890762



Industrial Nipple 1/4 in NPT F
Part No. 22-890763



Paratech Coupling with 1/4 in NPT M open
Part No. 22-890704V



Paratech Coupling with 1/4 in NPT M
Part No. 22-890712V



Paratech Coupling with 3/8 in NPT M
Part No. 22-890714V



Paratech Coupling with 3/8 in NPT F
Part No. 22-890716V



Paratech Nipple with 1/4 in NPT M
Part No. 22-890681



Paratech Nipple with 3/8 in NPT F
Part No. 22-890777



Nipple (Strut Inlet) 1/8 in NPSM
Part No. 22-796065



Hose Splice 3/8 in / 9.5 mm dia. x 3/8 in / 9.5 mm dia.
Part No. 22-890673



Hose Stem 1/4 in NPT M with 3/8 in / 9.5 mm dia.
Part No. 22-890674



Hose Barb 1/4 in NPT F with 3/8 in / 9.5 mm dia.
Part No. 22-890675



Dual Tank Connector with Check Valves - CGA 346/347
Part No. 22-800130 Net Weight: 1.5lb / 0.68kg



Dual Tank Connector with Check Valves - DIN
Part No. 22-800135 Net Weight: 1.5lb / 0.68kg

MaxiForce Air Lifting Bags

MaxiForce Accessories



**NIPPLE FOR
ALB 3/8 - 24 LH THD**
Part No. 22-890686



NIPPLE PROTECTOR-G2
Part No. 22-890709T



SWIVEL FITTING
Part Number: 22-890784
Weight: .46 lbs (208.6 g)



Air Hoses



A full 3/8 in / 9.5 mm inside diameter in a wide range of colors and lengths. Couplings and nipples are field replaceable using simple hand tools. Working pressure of 300 psi / 20.7 bar assures reliability. Hose stays flexible over the full operating temperature range of the lift bag. Closed couplings prevent air escape at disconnect (no blowing debris).

3/8 IN / 9.5 mm diameter

	RED	YELLOW	GRAY	BLUE	BLACK	GREEN
x 16 ft / 5 m (2.5 lb / 1.1 kg)	22-890516	22-890515	22-890518	22-890514	22-890513	22-890517
x 32 ft / 10 m (4.5 lb / 2.0 kg)	22-890521	22-890520	22-890525	22-890523	22-890522	22-890524
x 50 ft / 15 m (7.0 lb / 3.2 kg)	22-890541	22-890542	22-890545	22-890543	22-890546	22-890544

1 IN / 25.4 mm diameter

	RED	BLUE
x 20 ft / 6.1 m (11.0 lb / 5.0 kg)	22-887400	22-887401