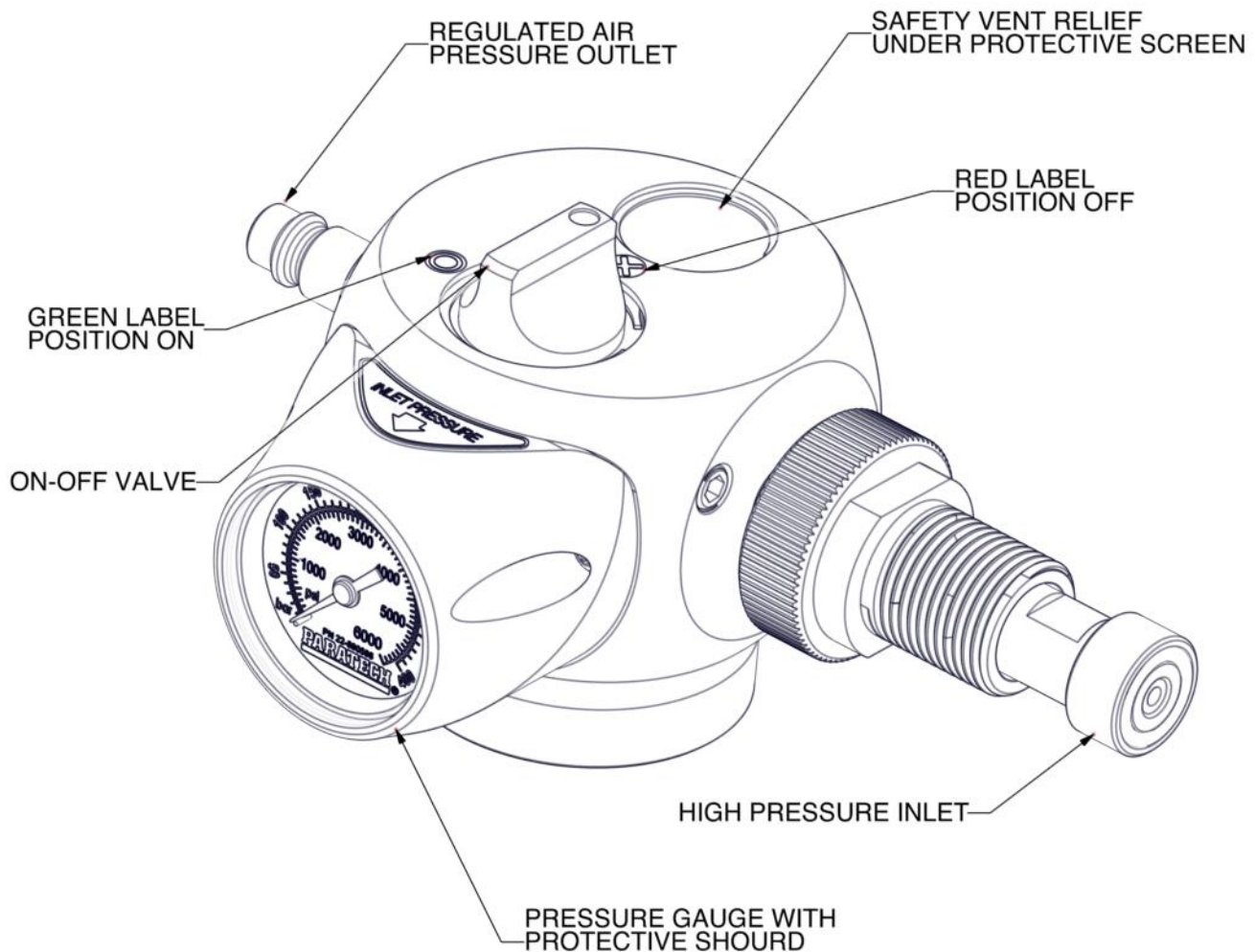
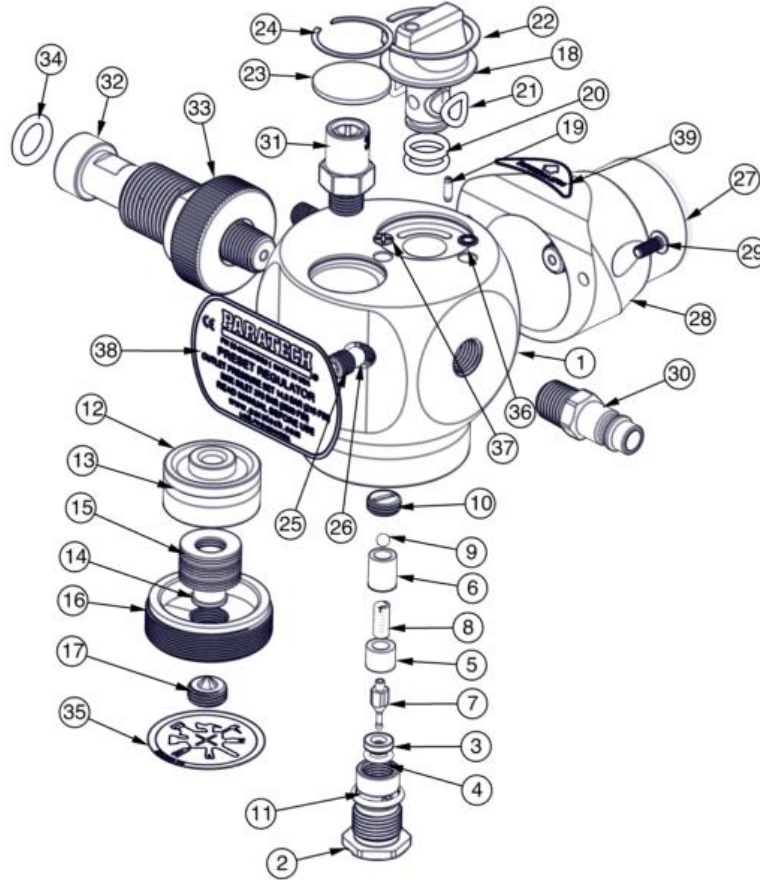


22-895401DG3 ALB REGULATOR INSTRUCTION SHEET



**REFER TO OPERATION, PREVENTIVE MAINTENANCE AND PARTS
MANUAL PN 22-895409 FOR PROPER USE WITH
PARATECH'S RESCUE EQUIPMENT**

22-895401DG3 ALB REGULATOR Parts list



ITEM	QTY	P/N	DESCRIPTION	ITEM	QTY	P/N	DESCRIPTION
1	1	895410	BODY, REGULATOR G3, PRESET ALB	21	2	890489	O-RING 5/16X.070 POLYURETH. 90
2	1	895413	CARTRIDGE HOUSING, REG.	22	1	895218	Ø1.25 INT RETAINING RING SS
3	1	895412	SEAT, MAIN, CARTR. REGULATOR	23	1	796V48	Ø1" POROUS MEDIA DISC
4	1	895513	O-RING AS-010 (1/4X.070) BN90	24	1	796V43	Ø1 LD INT RET RING SS
5	1	895414	SPACER FOR CARTRIDGE	25	2	895419	Ø1/4" BRASS BALL
6	1	895415	FILTER, SINTER. FOR REGULTR	26	2	890893	5/16-24 X 5/16 SCH SET SCR SS
7	1	895411	NEEDLE, MAIN REG VALVE, CARTR.	27	1	890596	GAUGE 1.5" 6000 PSI 1/8 BACK MT
8	1	895222	SPRING, NEEDLE VALVE	28	1	890957	GAUGE HOUSING REGULATOR G3
9	1	891135	BALL 5/32 440-C SS GRADE 24	29	2	670378	M4-7 X 10 BTNHD TORX SS
10	1	895416	END CAP, CARTRIDGE	30	1	890681	NIPPLE WITH 1/4 NPTM
11	1	890252	O-RING AS-015 90BN (9/16X.070)	31	1	890250	VENT RELIEF VALVE, 250 PSI
12	1	895317	PISTON, PRESET REG	32	1	895367	NIPPLE - DIN
13	1	895247	O-RING AS-121 1-1/16X.103 BN70	33	1	895353	NUT, 5500 PSI DIN
14	1	895325	PIN, DISC GUIDE REG	34	1	891154	O-RING AS-111 7/16X.103 BN70
15	10	895273	DISC SPRNG 20X10.2X1MM L=1.55	35	1	895328	LABEL, Ø1.5" PLATE COVER
16	1	895329	REGULATOR END CAP, PRESET G3	36	1	8950N	ROUND LABEL ON, GREEN G3
17	1	895321	ADJUSTING SCR, PRESET	37	1	8950FF	ROUND LABEL OFF, RED G3
18	1	890498	KNOB, ON/OFF REGULATOR G3	38	1	895401DG3L	REGULATOR ALB G3 PRESET DIN
19	1	890935	SPRING PIN 3/32 X 5/16 S.S.	39	1	895101	LABEL, INLET PRESSURE
20	2	550174	O-RING AS-013 (7/16X.070) BN70				