



Timeline



1962 WORLD'S FAMOUS PRY AXE INTRODUCED



1965 THE HOOLIGAN TOOL, THE WORLD'S FIRST PRODUCTION "HALLIGAN" TYPE FORCIBLE TOOL IS INTRODUCED



1976 MAXIFORCE® AIR LIFTING BAGS INTRODUCED TO THE UNITED STATES FIRE RESCUE SERVICE



1979 PARATECH BECOMES THE FIRST U.S. MANUFACTURER OF A MOLDED, HIGH PRESSURE AIR LIFTING BAG



1981 THE P-10 TRUCK MADE BY PARATECH FOR THE U.S.A. AIR FORCE STATIONED IN SOUTH KOREA



1983 PARATECH INTRODUCES THE WORLD'S FIRST KEVLAR® REINFORCED AIR LIFTING BAGS UNDER ITS MAXIFORCE® TRADEMARK



1984 PARATECH INTRODUCES THE AIRGUN 40 PNEUMATIC IMPACT TOOL



1985 U.S. NAVY PURCHASES 500 AIRGUN 40S FOR SHIPBOARD FIREFIGHTING



1992 RESCUE STRUTS, THE FIRST SELF-LOCKING COLLAPSE SUPPORT SYSTEMS IN THE WORLD ARE INTRODUCED



1993 FIRST VEHICLE STABILIZATION (VSK) KIT CREATED



1994 NORTHRIDGE, CA EARTHQUAKE: LOS ANGELES CITY & COUNTY RESCUE TEAMS USE MAXIFORCE® LIFTING BAGS, RESCUE STRUTS, PRT KITS AND PRY-AXES FOR RESCUE



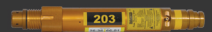
1995 KOBE, JAPAN EARTHQUAKE: MAXIFORCE® LIFTING BAGS, RESCUE STRUTS, PRT KITS AND PRY-AXES USED FOR RESCUE



1998 PARATECH ACHIEVES ISO 9001 CERTIFICATION



1999 ISTANBUL, TURKEY EARTHQUAKE: RESCUE STRUTS & MAXIFORCE® LIFTING BAGS BECOME A VITAL PART OF EARTHQUAKE PREPAREDNESS



2000 LONGSHORE STRUTS DESIGNED & DEVELOPED FOR HIGH ANGLE COLLAPSE RESCUE



2002 THE BUSTER TOOL IS DESIGNED TO MEET AND EXCEED FAA REGULATIONS FOR CRASH AXES



2002 PARATECH EU IS ESTABLISHED IN DENMARK IN ORDER TO CREATE A STRONGER PRESENCE IN EUROPE



2003 PARATECH RESCUE SUPPORT SYSTEMS ARE ADAPTED BY FEMA AS A STANDARD



2004 UNITED KINGDOM STANDARDIZES ON PARATECH RESCUE STRUTS FOR THEIR COLLAPSE AND US&R OPERATIONS



2005 THE SHORING HAMMER IS INTRODUCED AND USED THROUGHOUT NEW ORLEANS IN THE WAKE OF HURRICANE KATRINA



2006 THE SMT™ (SPECIAL MISSION TENDER) IS INTRODUCED FOR QUICK AND EASY DEPLOYMENT AND PURCHASE OF PARATECH EQUIPMENT



2007 THE WALER SYSTEM IS DEVELOPED



2007 SINGAPORE CIVIL DEFENSE RESPONDS TO CHINA EARTHQUAKE WITH PARATECH EQUIPMENT



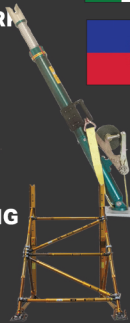
2008 THE MULTI BASE IS DESIGNED FOR RESCUE SUPPORT SYSTEMS



2009 PARATECH EQUIPMENT DEPLOYED TO L'AQUILA, ITALY EARTHQUAKE



2010 PARATECH EQUIPMENT DEPLOYED TO HAITI EARTHQUAKE



2010 THE STRONGEST 'ALL IN ONE' VEHICLE STABILIZER, THE TVS, (TWISTLOCK VEHICLE STABILIZER) IS INTRODUCED



2012 ABSOLUTE RAKER—FIRST ALL MECHANICAL RAKER SHORE INTRODUCED



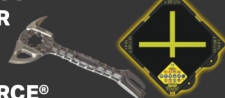
2013 HYDRAULIC-FUSION-STRUT (HFS) PARATECH'S FIRST HYDRAULIC RESCUE STRUT UNVEILED



2014 DAMAGE CONTROL SYSTEMS (DCS) PARATECH DCS INSTALLED ON SWEDISH NAVY SHIPS



2014 PARATECH INTRODUCES MAXIFORCE® G2 AIR LIFTING BAGS



2014 THE TITAN CRASH AXE IS CREATED BY PARATECH, WITH INPUT FROM THE AIR FORCE'S PARARESCUEMEN



2015 THE MULTIFORCE® AIR LIFTING BAG IS INTRODUCED



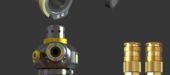
2016 THE VSK CONTROLLER IS INTRODUCED



2016 MULTIFORCE POSITIONING LIGHTS ARE INTRODUCED



2017 THE ACMETHREAD STRUT DRIVER RETRO FIT KIT IS INTRODUCED



2018 PARATECH INTRODUCES THE ACMETHREAD STRUT DRIVER



2019 THE G3 DEADMAN CONTROLLERS AND VENTED COUPLINGS ARE INTRODUCED



2020 THE RESCUE GUARDIAN AND G3 PRESET REGULATOR ARE INTRODUCED



2024 PARATECH INTRODUCES MAXIFORCE® G3 AIR LIFTING BAGS



Table of Contents

05

**Paratech
Certified
Training**

06

**TECHNICAL
RESCUE RESPONSE
UNIT**

10

**Rescue
Support
Systems**

38

**Vehicle
Stabilization Kits**

44

**Multiforce Air
Lifting Bags**

46

**Maxiforce
Air Lifting
Bags**

62

**Rescue Air
Cushions**

68

**Forcible Entry
Tools**

76

**Powered
Impact Tools**

82

**Damage Control
Systems**

86

**Paratech
Resources**

87

**Paratech Ordering Terms,
Conditions & Warranty**

88

**Paratech Rescue
Award**

89

**Paratech
Contacts**

PARATECH

For more than 60 years, Paratech has been combining innovative design with cutting edge technology to provide the highest quality and most user-friendly tools available for rescue and beyond. From the world's most advanced collapse support solutions to some of the world's strongest forcible entry tools, Paratech makes technical rescue operations simpler, safer and more productive.

Our product lines are comprised of Rescue Support Systems, MAXIFORCE[®] Air Lifting Bags, The MULTIFORCE[®] Air Lifting Bag, Powered Impact Tools, Forcible Entry Tools, Rescue Air Cushions, and the ultimate collection of essential Paratech products...the SMT[™]... Special Mission Tender equipped specifically for either urban search and rescue or trench rescue, both are loaded with all of the necessary Paratech tools needed for technical rescue.

Paratech products are extensively used by fire departments worldwide including, but not limited to: all major U.S. cities, Copenhagen, Tokyo, London, Lyon, Madrid, Singapore and Istanbul. In addition, they have been selected by disaster agencies in the United States, Denmark, Japan, United Kingdom and Turkey as the standard for their rescue teams and technical rescue caches.



PARATECH®

Training & Tactics Courses

Learn More



Paratech is a firm believer that Instruction in Rescue operations should be delivered by companies specialized in doing just that. We have received requests from customers around the world to provide instruction specific to Paratech products – The Paratech Training and Tactics program delivers this in two ways: the Paratech online Workshops and through our comprehensive Training and Tactics program where we have partnered with some of the best Instruction Companies around the world, use QR code for quotes and further informations.



The curriculum can also be customized to the department preferences: Trench Rescue, Structure Collapse, Confined Space, Ag Rescue and Vehicle Machinery Tech.



Lifting & Moving

Single, double and daisy chain lifts with Maxiforce Air Lifting Bags. Rescue Air Cushions and MultiForce Air Lifting Bags lifts.

Training Highlights



Vehicle & Machinery

Stabilizing and lifting light vehicles using air bags and StrutDrivers.



Building Collapse

Solid Sole, Flying, Split Sole and Corner Rakers. Window and door shores. Internal shoring and sloped floor shore.



Lifting & Moving

Using Paratech Monopod, Bipod and Tripods to lift and move objects using ropes and come-alongs.



Heavy Vehicle Stabilization and Lifting

Stabilizing and lifting heavy vehicles using air bags and HydraFusion struts.

Technical Rescue Response Unit

Paratech Technical Rescue Response Units - (TRRU)

The Paratech TRRU is a low maintenance and cost effective solution for fire departments and rescue teams.

A neat and organized mobile container for all your Paratech Technical Rescue Equipment.

Always Ready to deploy.

All the features of a Rescue Truck without the cost of indoor storage, maintenance and upkeep.

COMPACT TRRU



Technical Rescue Response Unit

Covers all your equipment needs for

- Man and Machine Rescue
- Trench Rescue
- Building Collapse Rescue
- Heavy Vehicle Rescue

ADVANCED TRRU



Learn More



Technical Rescue Response Unit

Compact TRRU

The Compact TRRU is fully capable of initiating an array of US&R and vehicle rescues. It is small enough to maneuver through narrow streets, but big enough to respond to a vast array of rescues. The Compact TRRU is self-contained, can be remote positioned and is ready to roll at any time. This versatile trailer consists of a comprehensive set of Paratech equipment in one compact, mobile package. Includes an Absolute Flying Raker, Remote Placement MULTIFORCE Bag Kit, Man and Machine Kit, Air Control Case, Pakhammer Kit, PRT Kit and much much more.

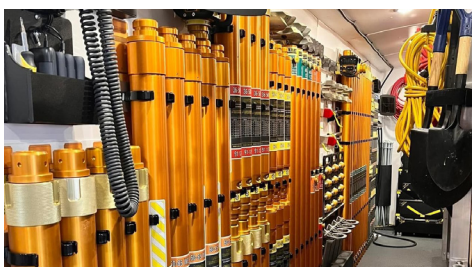


- Exterior Light Towers
- Portable Generator
- Compact Cache
- Compact Size
- Remote Positioning
- Easy Maneuvering
- Rack for Air Lifting Bags

Part No.	Description
22-700180	Compact TRRU, US
22-700200EU	Compact TRRU, Int.



Compact Size



Organized



Full Overview

Learn More



Easy Access



Secure

Technical Rescue Response Unit

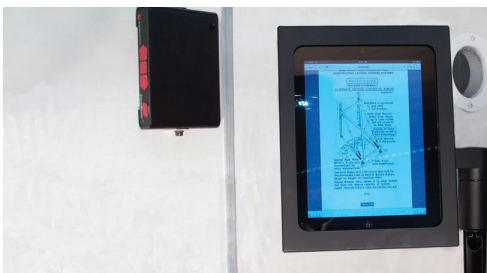
Advanced TRRU

The Advanced TRRU consists of the most comprehensive set of Paratech rescue equipment you will ever find in one mobile unit. It comes fully loaded for US&R, trench and heavy vehicle rescues. The Advanced TRRU is self-contained. It can be remote positioned and is ready to roll at any time. The Advanced TRRU is big enough to hold an advance logistics point or even a small commandpost. Includes full Raker Sets, Flying Raker Sets, Trench Kits, Remote Placement MULTIFORCE Bag Kit, Man and Machine Kit, Air Control Case, Pakhammer Kit, PRT Kit and much much more.

- **Roof Command Light**
- **Onboard Generator**
- **Extensive Cache**
- **40% larger**
- **Remote Positioning**
- **Rack for Air Lifting Bags**
- **Cache Graphics**
- **LED Lighting**
- **Onboard Data Resource**
- **Free capacity**



Part No.	Description
22-700238	Advanced TRRU, with Generator
22-700248	Advanced TRRU, without options



Onboard Data Resource



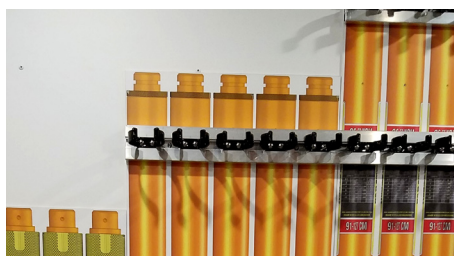
Advanced Lighting Package



MAXIFORCE® Master Rack



Storage Layout Graphics for Easy Reloading of Equipment



Learn More





The Paratech Rescue Support System

The Paratech Rescue Support System is truly a "go anywhere" system. Designed to be effective for the simplest to the most demanding deployment, there isn't a more comprehensive, scalable and straightforward system than Paratech's. Whether you choose the precision of the AcmeThread Strut, the automatic locking collar of the LockStroke Strut or the added length of the LongShore Strut, they are strong and versatile enough for nearly every collapse and stabilization scenario.

The entire system includes 5 sizes of AcmeThread Struts, 4 sizes of LockStroke Struts, 3 sizes of HydraFusion Struts, 4 sizes of AcmeThread/LockStroke Extensions, 5 sizes of LongShore Struts, 4 LongShore Extensions and over 20 interchangeable base plates designed to support a wide variety of contact points. All aluminum alloy components of the Rescue Support System are hard coat anodized to reduce electrical conductivity and increase strength and durability.

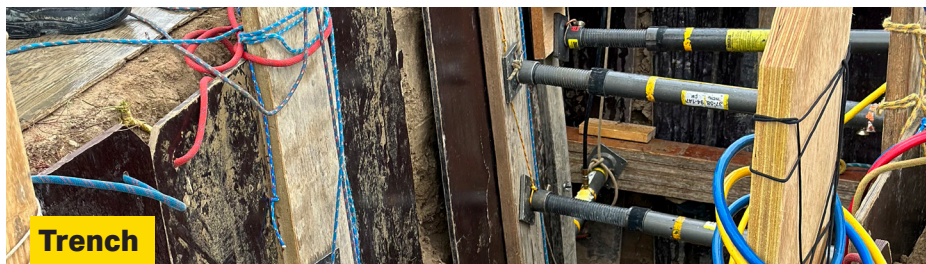
Truly a system that will not stop growing, Paratech's Rescue Support System can be used in excavation collapse (trenches, mines), vehicle stabilization, structural collapse and reinforcement, or wherever there is a need for quick, strong and safe vertical or horizontal shoring.

Structural Shoring

Earthquakes, construction collapse, cave-ins, floods and structural fire damage require a collapse rescue system designed for the purpose of extracting victims in a safe and timely manner.

Vehicle Stabilization

Paratech Vehicle Stabilization Kits have the strength and flexibility to handle any size vehicle anytime, anywhere. This includes sub compact cars, buses, cement trucks and even locomotives. Additionally, these components provide the extra value of being completely interchangeable with your other Paratech equipment for building collapse and trench rescue scenarios.



Trench Shoring

Paratech's pneumatic Rescue Struts allow for remote placement and easy locking as well as safe, remote removal. Used in combination with our Waler System, trench rescue has never been faster, easier or safer.

Special Applications

To be used in combination with Paratech's LongShore, AcmeThread and LockStroke Struts, a wide variety of bases and accessories are available to assist in numerous special application scenarios. These include, but in no way are limited to: elevator shaft access and victim retrieval, high angle applications, confined space work and trench rescue. Add-on kits include: Tripod, Bipod, Monopod and Elevator Support Unit Kits.



Rescue Support Systems

RESCUE GUARDIAN

Part No. **22-796RG1**

The most advanced monitoring and alarm system for technical rescue available. Remotely **monitor multiple Rescue Guardians at once** on either **Android or iPhone** operating systems. Receive notifications of any change in status. Designed by rescue professionals for rescue professionals. The ultimate in rescue monitoring technology.

Monitors:

Load, Vibration, Incline

Wirelessly Transmits:

Load change, Seismic activity, Incline data

Warning System:

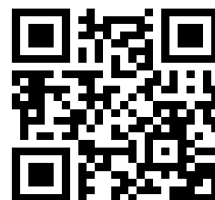
6 high powered red LEDs
High decibel auditory alarm
Notifications via Bluetooth

Applications:

Structural Collapse (Raker Shoring, Vertical Shoring), Vehicle Stabilization, Trench Rescue, Stand-alone monitoring

Easy to Use

and Very Customizable

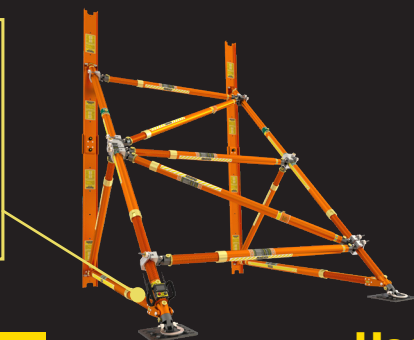


Download The App Here!



Remote Monitoring App

Very secure and very flexible. Use loaded presets for standard applications or adjust them to custom, savable settings based on your requirements. This software is designed to be intuitive and easy to learn. Future ready for upgrades and updates.



1 Week Battery Life

under continuous usage in low-power monitoring mode. Includes a low battery warning. Easily replaceable and available lithium ion batteries.

Use in-line with RescueStruts

Numerous Mounting Configurations Available!



PARATECH

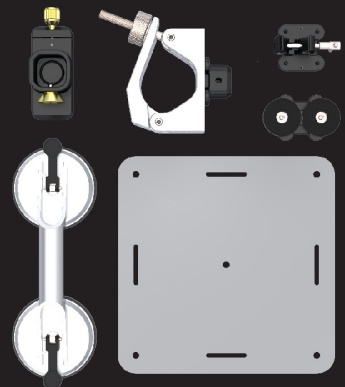
RESCUE GUARDIAN KIT 1 RESCUE GUARDIAN



RESCUE GUARDIAN KIT 2 RESCUE GUARDIANS



Part No.	Description	Quantity	Part No.	Description	Quantity
22-796RG1-1K			22-796RG1-2K		
22-796RG1	Rescue Guardian	1	22-796RG1	Rescue Guardian	2
22-796598	Rescue Guardian Magnet Clamp	1	22-796598	Rescue Guardian Magnet Clamp	1
22-796699	Rescue Guardian Clamp and Clevis	1	22-796699	Rescue Guardian Clamp and Clevis	1
22-796625	Rescue Guardian Nailing Plate	1	22-796625	Rescue Guardian Nailing Plate	1
22-796627	Rescue Guardian Suction	1	22-796627	Rescue Guardian Suction	1
22-796634	Rescue Guardian Base Clamp	1	22-796634	Rescue Guardian Base Clamp	1
22-796663	Rescue Guardian Carrying Case	1	22-796663	Rescue Guardian Carrying Case	1
22-796678	Rescue Guardian Adpt. Plate	1	22-796678	Rescue Guardian Adpt. Plate	1



Rescue Support Systems

RSS Comparison	AcmeThread	LockStroke	LongShore	HydraFusion
SIZES	5	4	5	3
LENGTHS	12 – 88 in (31–224 cm)	19 – 89 in (48–226 cm)	26–198 in (66–503 cm)	8.2–51.1 (46,2–121,2 cm)
EXTENSIONS	4	4	4	AcmeThread & LongShore
EXTENSION LENGTHS	6–36 in (15–91 cm)	6–36 in (15–91 cm)	12–67 in (30,5–170 cm)	6–67 in (15–170 cm)
AUTO LOCKING COLLAR	NO	YES	NO	NO
FINE ADJUSTMENT	YES	YES with attachment	YES	YES
REMOTE PLACEMENT	YES	YES	YES	YES
TRENCH STABILIZATION	YES	YES	YES	YES
COLLAPSE STABILIZATION	YES	YES	YES	YES
VEHICLE STABILIZATION	YES	YES	YES	YES

AcmeThread Strut

The Paratech AcmeThread Struts are comprised of a 2½" diameter Acme threaded aluminum movable solid shaft that extends out of a 3" diameter aluminum tube. The AcmeThread is a square thread that allows full surface contact of the shaft through the collar and the collar full surface contact on the tube to transfer load directly to ground. AcmeThread Struts can be extended manually or pneumatically with air, carbon dioxide or nitrogen.

Place strut into position, 'EXTEND' threaded shaft into desired length, 'SPIN' collar to 'LOCK' the strut.

It is as easy as...

EXTEND & SPIN TO LOCK

Adjustments to the threaded shaft can be made in ANY increment up to the maximum length of the strut.

LockStroke Strut

The Paratech LockStroke Struts are comprised of a 2½" diameter grooved solid aluminum movable shaft that extends out of a 3" diameter aluminum tube. LockStroke Struts have a ball bearing filled collar that locks automatically when the shaft extends either manually or pneumatically with air, carbon dioxide or nitrogen.

'SET' strut into position, 'EXTEND' strut with air or manually and the strut 'LOCKS' automatically. It is as easy as...

SET, EXTEND TO LOCK



Over 20 Interchangeable Bases

All Aluminum Alloy Components Of The Rescue Support System Are Hard Coat Anodized To Increase Strength And Durability
Machine Knurled
Non-Slip Locking Collar

Acmethread-Longshore-Hydrfusion

The Strongest & Most Versatile Struts In The World

Paratech AcmeThread & LockStroke Load Table

Working Load Chart At The Following Safety Factors

LENGTH	2:1 lb.	kg.	3:1 lb.	kg.	4:1 lb.	kg.
2 ft (0.6m)	43,500	19,731	29,000	13,154	21,750	9,866
4 ft (1.2m)	40,000	18,144	26,667	12,096	20,000	9,072
6 ft (1.8m)	28,250	12,814	18,830	8,541	14,125	6,407
8 ft (2.4m)	24,050	10,909	16,030	7,271	12,025	5,455
10 ft (3.0m)	10,725	4,865	7,150	3,243	5,360	2,431
12 ft (3.6m)	7,660	3,475	5,000	2,313	3,830	1,737

5 YEAR WARRANTY

The data in this table has been confirmed by physical testing, witnessed and certified by an independent, licensed structural engineering company.



LongShore Strut

The Paratech LongShore Struts are comprised of a 3" diameter threaded aluminum movable shaft that extends out of a 3½" diameter aluminum tube. The square thread allows full surface contact of the shaft through the collar and the collar full surface contact on the tube to transfer load directly to ground. LongShore Struts can be extended manually or pneumatically with air, carbon dioxide or nitrogen.

Place strut into position, 'EXTEND' threaded shaft into desired length, 'SPIN' collar to 'LOCK' the strut.

It is as easy as...

EXTEND & SPIN TO LOCK

Adjustments to the threaded shaft can be made in ANY increment up to the maximum length of the strut.



HydraFusion Strut

The Paratech HydraFusion Struts (AcmeThread) are comprised of a 3" diameter threaded aluminum shaft that extends hydraulically out of a 3 1/2" diameter aluminum tube. The hydraulic lift capacity is 10 U.S. tons with a 2:1 safety factor. Once the strut is extended, the AcmeThread collar is spun down to the locked position and creates a 20,000 lbs. 4:1 safety factor for stabilization.

Place strut into position, 'EXTEND' threaded shaft into desired length, 'SPIN' collar to 'LOCK' the strut.

It is as easy as...

EXTEND & SPIN TO LOCK

Adjustments to the threaded shaft can be made in ANY increment up to the maximum length of the strut.



Longshore Struts Are Stronger and Longer for Your Heaviest and Highest Support Situations

Paratech LongShore Load Table
Working Load Chart At The Following Safety Factors

LENGTH	2:1 lb.	kg.	3:1 lb.	kg.	4:1 lb.	kg.
6 ft (1.8m)	44,000	19,958	29,333	13,305	22,000	9,980
7 ft (2.1m)	44,000	19,958	29,333	13,305	22,000	9,980
8 ft (2.4m)	40,000	18,144	26,666	12,095	20,000	9,072
9 ft (2.7m)	32,000	14,515	21,333	9,676	16,000	7,257
10 ft (3.0m)	24,000	10,886	16,000	7,257	12,000	5,443
11 ft (3.3m)	22,000	9,979	14,667	6,653	11,000	4,990
12 ft (3.6m)	20,000	9,072	13,333	6,047	10,000	4,536
13 ft (3.9m)	14,000	6,350	9,332	4,233	7,000	3,175
14 ft (4.2m)	12,000	5,443	8,000	3,629	6,000	2,722
15 ft (4.5m)	9,000	4,082	6,000	2,722	4,500	2,041
16 ft (4.8m)	6,000	2,722	4,000	1,814	3,000	1,361

5 YEAR WARRANTY

The data in this table has been confirmed by physical testing, witnessed and certified by an independent, licensed structural engineering company.



HydraFusion Struts

The Paratech HydraFusion Struts offer end users the ability to lift up to 10 U.S. tons with a safety factor of 2:1 and to stabilize up to 20,000 lbs. with a safety factor of 4:1. The innovative, built in Dual Shaft End Adapter (patent pending) allows users to safely use Paratech LongShore, LockStroke or AcmeThread Struts and Extensions in conjunction with the incredible lifting ability of the HydraFusion Strut.

HydraFusion Strut Kits

All lift 10 tons (9,0 t) with a 2:1 safety factor.
All shore 20,000 lbs. (9,0 t) with a 4:1 safety factor



HydraFusion Strut 04 Kit

Net Weight: 42.2 lb 19,2 kg
Part No. 22-79HA04K



HydraFusion Strut 10 Kit

Net Weight: 51.8 lb 23,5 kg
Part No. 22-79HA10K



HydraFusion Strut 16 Kit

Net Weight: 60.7 lb 27,6 kg
Part No. 22-79HA16K



HydraFusion Pump With Gauge

With Gauge and Hose Only

Net Weight: 23.2 lb 10,5 kg
Part No. 22-790020G

No-spill, flat-face hydraulic coupling with a non-conductive 10 ft (3 m) kink-resistant hose.

Two speed, single acting, lightweight, 10,000 psi (690 bar), metal hydraulic pump.



HydraFusion Hose Extension

Net Weight: 2.2 lb 1,0 kg Net
Part No. 22-790030X



HydraFusion Struts Accessories



Strut Converter

Use a Strut Converter to attach a base to the top end of a HydraFusion Strut

Net Weight: 2.7lb 1,2kg
Part No. 22-796035



HydraFusion Longshore Screw Adapter

Net Weight: 6.1lb 2,7kg
Part No. 22-790019



HydraFusion AcmeThread Screw Adapter

Net Weight: 6.5lb 2,9kg
Part No. 22-790067

Part No.	Description	Lift Height		Net Weight		Ship Weight		
		in	cm	lb	kg	lb	kg	
22-79HA04	HydraFusion Strut 04	18.2 – 22.0 in / 46,2 – 55,8 cm	4	10.2	18.7	8,5	19.7	8,9
22-79HA10	HydraFusion Strut 10	25.2 – 35.0 in / 64,0 – 88,9 cm	10	25.4	28.3	12,8	29.3	13,3
22-79HA16	HydraFusion Strut 16	32.0 – 47.7 in / 81,3 – 121,2 cm	15.9	40.4	37.2	16,9	38.2	17,3
22-79HA04K	HydraFusion Strut 04 Kit		4	10.2	42.2	19,2	43.4	19,6
22-79HA10K	HydraFusion Strut 10 Kit		10	25.4	51.8	23,5	52.8	23,9
22-79HA16K	HydraFusion Strut 16 Kit		15.9	40.4	60.7	27,6	61.7	27,9
22-790020G	HydraFusion Pump with Gauge		N/A	N/A	23.2	1,5	24.5	11,1
22-790019	Hydrafusion LongShore Screw Adapter		N/A	N/A	6.1	2,7	7.5	3,4
22-790067	Hydrafusion AcmeThread Screw Adapter		N/A	N/A	6.5	2,9	8.1	3,6
22-796035	Strut Converter		N/A	N/A	2.7	1.2	3.1	1.4

ACME THREAD STRUT DRIVER **LIFT** LIKE NO OTHER!

PARATECH ACME THREAD STRUT DRIVER EASY TO USE, QUICK TO DEPLOY, STRONG AND SAFE



AcmeThread Strut Driver

Medium duty strut lifting device integrated into our extremely strong and versatile AcmeThread Rescue Strut. Safe, Easy, Fast Lifting. 6,000 lbs (2,721 kg) lifting capacity. Limitless Functionality; Vehicle stabilization, Structural collapse scenarios, trench shoring, soft placement ability. Made from aircraft grade aluminum housings, alloy steel gears and hardened ball bearings, making lifting smooth and easy. Contoured gear box designed to resist dragging during vehicle lifts. Directional safety mechanism to insure strut will only travel in the direction it indicates.

Available in Two AcmeThread Strut Sizes

AcmeThread Strut Driver: 25-36 in / 64-91 cm (22.6 lbs / 10,2 kg)
Part No. 22-796200SD

AcmeThread Strut Driver: 37-58 in / 94-147 cm (29.6 lbs / 13,4 kg)
Part No. 22-796202SD

Hex Ratchet Handle: 22-797727 (2.85 lbs / 1,3 kg)



AcmeThread Strut Driver Retro Fit Kit

Can be attached to any of your existing AcmeThread struts to utilize all the same functionalities of the AcmeThread Strut Driver. This kit includes a removable gearbox and tube end adapter. Can be fully installed and still manually adjusted. An additional tube end adapter is necessary if using strut extensions. Accessories to this kit include the 3/4" (19mm) Hex Wrench and strut Carrying Handle.

Kit with Hex Ratchet Handle: 22-79SDRFH

Kit without Hex Ratchet Handle: 22-79SDRF

Hex Ratchet Handle: 22-797727

Carrying Handle: 22-797042E

17.2 lbs / 7,8 kg

14.4 lbs / 6,5 kg

2.8 lbs / 1,3 kg

2.4 lbs / 1,1 kg



Rescue Support Systems

AcmeThread Struts

AcmeThread Struts offer the end-user the ability to extend manually or pneumatically with air, carbon dioxide or nitrogen, utilizing the recessed nipple fitted to the aluminum tube. The 12-15 inch strut is the **ONLY** non-pneumatic strut. AcmeThread Struts always default to the locked position.



Part No.	Description	Net Weight: lb	kg	Ship Weight: lb	kg
22-796212	AcmeThread Strut 12-15 in / 30-38 cm	6.6	3,0	7.1	3,2
22-796206	AcmeThread Strut 19-25 in / 48-64 cm	11.2	5,1	11.7	5,3
22-796200	AcmeThread Strut 25-36 in / 64-91 cm	14.9	6,8	15.4	6,9
22-796202	AcmeThread Strut 37-58 in / 94-147 cm	22.4	10,2	22.9	10,4
22-796204	AcmeThread Strut 56-88 in / 142-224 cm	32.6	14,8	33.1	15,0

LockStroke Struts

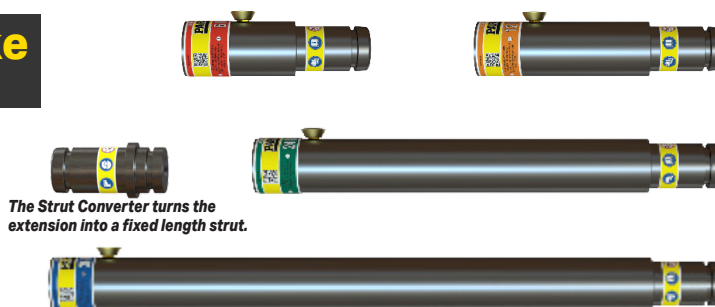
LockStroke Struts feature an innovative automatic locking collar. Activated either manually or pneumatically with air, carbon dioxide or nitrogen, LockStroke Struts always default to the locked position.



Part No.	Description	Net Weight: lb	kg	Ship Weight: lb	kg
22-796006	LockStroke Strut 19-25 in / 48-64 cm	12.7	5,8	13.2	5,9
22-796000	LockStroke Strut 25-36 in / 64-91 cm	16.5	7,5	17.0	7,7
22-796002	LockStroke Strut 36-58 in / 94-147 cm	24.0	10,9	24.5	11,1
22-796004	LockStroke Strut 55-88 in / 142-224 cm	35.7	16,2	36.2	16,4

AcmeThread & LockStroke Strut Extensions

Paratech offers four sizes of extensions 6, 12, 24 and 36 inches, which can be used with the AcmeThread & LockStroke Struts. Extensions are attached to the strut on the solid end.



Part No.	Description	Net Weight: lb	kg	Ship Weight: lb	kg
22-796035	Strut Converter	2.7	1,2	3.1	1,4
22-796017	Strut Extension 6 in / 15 cm	3.8	1,7	4.2	1,9
22-796012	Strut Extension 12 in / 30 cm	4.6	2,1	5.0	2,3
22-796024	Strut Extension 24 in / 61 cm	7.1	3,2	8.0	3,6
22-796036	Strut Extension 36 in / 91 cm	9.7	4,4	11.0	5,0

For all lengths displayed above. CLOSED position: inches rounded up - decimals not shown. OPEN position: inches rounded down - decimals not shown.

LongShore Struts

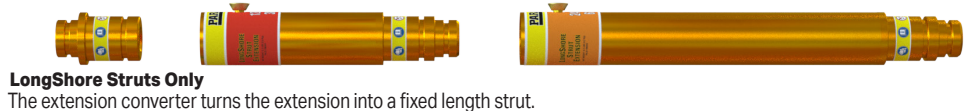
LongShore Struts offer end-users the ability to extend manually or pneumatically with air, carbon dioxide or nitrogen, utilizing the recessed nipple fitted to the aluminum tube. LongShore Struts always default to the locked position.



Part No.	Description	Net Weight: lb	kg	Ship Weight: lb	kg
22-796710	LongShore Strut 26-36 in / 66-91 cm	16.0	7,3	17.0	7,7
22-796720	LongShore Strut 36-50 in / 91-127 cm	22.0	10,0	23.0	10,5
22-796730	LongShore Strut 48-73 in / 122-185 cm	28.0	12,7	29.0	13,2
22-796360	LongShore Strut 72-116 in / 183-295 cm	41.0	18,6	42.0	19,1
22-796390	LongShore Strut 114-198 in / 290-503 cm	65.0	29,5	66.0	29,9

LongShore Struts Extensions

Paratech offers four sizes of LongShore Extensions 12, 24, 48 and 67 inches. Extensions are attached to the strut on the solid end.



Part No.	Description	Net Weight: lb	kg	Ship Weight: lb	kg
22-796037	LongShore Converter	2.5	1,1	2.6	1,2
22-796341	LongShore Extension 135 12 in / 30 cm	6.2	2,8	7.2	3,3
22-796342	LongShore Extension 235 24 in / 61 cm	9.2	4,2	10.2	4,6
22-796356	LongShore Extension 435 48 in / 122 cm	15.0	6,8	16.0	7,3
22-796376	LongShore Extension 635 67 in / 170 cm	20.0	9,1	21.0	9,5

LongShore Adjustable Brace

The B23 and B57 are manually adjusted by twisting the inner threaded shaft to increase or decrease the length of the brace. Utilized in Paratech's Flying Raker Kit (B23) and Midpoint Brace Kit (B57). Utilized to support in both compression as well as tension applied forces.



Part No.	Description	Net Weight: lb	kg	Ship Weight: lb	kg
22-796348	LongShore Adjustable Brace B23 26-36 in / 66-91 cm	15.0	6,8	16.0	7,3
22-796350	LongShore Adjustable Brace B57 60-85 in / 152-216 cm	32.7	14,5	33.7	15,3





For all lengths displayed above. CLOSED position: inches rounded up - decimals not shown. OPEN position: inches rounded down - decimals not shown.



Bases & End Plates

Designed to be the strut's contact point, Paratech's wide assortment of aluminum alloy bases and end Plates offer unparalleled versatility in the widest range of collapse support situations.

For Use With:

-  LockStroke
-  AcmeThread
-  LongShore
-  HydraFusion



ADJUSTABLE THREADED CONNECTOR

For LockStroke Strut

Net Weight: 2.2lb 1,0kg
Part No. 22-796160



SPRING LOADED CONNECTOR

For LockStroke Strut

Net Weight: 2.2lb
1,0kg
Part No. 22-796170



V BASE

The V Base has a 90° V that will fit onto any right angle. Features 2 nailing holes should it need to be nailed to a piece of wood used in other applications

Net Weight: 1.4lb
0,6kg
Part No. 22-796090



HINGED BASE PLATE 12 with ANCHOR RING 12 IN / 30,5 CM

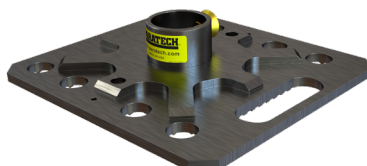
45° hinged base with eight
1 in / 2,5 cm picket holes
Net Weight: 12.0lb 5,4kg
Part No. 22-796180C



SWIVEL BASE 12 12 IN / 30,5 CM

20° swivel base with eight
1 in / 2,5 cm picket holes

Net Weight: 9.3lb 4,2kg
Part No. 22-796180B



RIGID BASE 12 12 IN / 30,5 CM

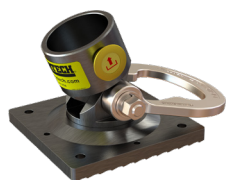
Net Weight: 8.6lb 3,9kg
Part No. 22-796180A



DUAL BASE 24 IN / 61 CM

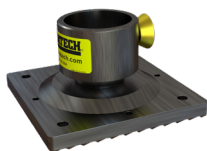
Two 360 degree rotatable, quick locking
hinged bases with anchor rings.

Net Weight: 25.8lb 11,7kg
Part No. 22-796180D



HINGED BASE WITH ANCHOR RING 6 IN / 15,2 CM

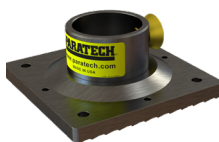
45° hinged base
Net Weight: 4.5lb 2,0kg
Part No. 22-796150



SWIVEL BASE 6 6 IN / 15,2 CM

20° swivel base

Net Weight: 3.3lb
1,5kg
Part No. 22-796060



RIGID BASE 6 6 IN / 15,2 CM

Net Weight: 2.8lb
1,3kg
Part No. 22-796070



CHANNEL BASE US: 6 IN x 6 IN / 15,2 CM x 15,2 CM Part No. 22-796136

CHANNEL BASE METRIC:
6.3 IN x 7 IN / 16 CM x 17,8 CM
Part No. 22-796133

Used for structural collapse to
support beams
Net Weight: 2.5lb 1,1kg



CHANNEL BASE US: 4 IN x 6 IN / 10,2 CM x 10,2 CM Part No. 22-796134

CHANNEL BASE METRIC:
4.3 IN x 6 IN / 10,9 CM x 15,2 CM
Part No. 22-796131

Used for structural collapse to
support beams
Net Weight: 2.0lb 0,9kg



MULTI CHAIN BASE

Takes 3/8" (9,5mm) and 1/2" (12,7mm)
*Including square chains

Net Weight: 3.16lb 1,64kg
Part No. 22-796685



MULTI BASE

Can be used as a V Base, Cone Base, Wedge Base and will accept a 3/8" chain

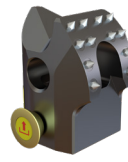
Net Weight: 2.0lb 0,9kg
Part No. 22-796025



CONVEX MULTI BASE

Multi-purpose vehicle stabilization with Chain Wedge for 3/8" chain, V and cone feature

Net Weight: 3.2lb 1,4kg
Part No. 22-796269



SPIKE BASE

The Spike Base has replaceable stainless steel spikes that will dig into sheet metal and a V and cone feature for Veh. Stabilization

Net Weight: 1.2lb 0,5kg
Part No. 22-797687



CONTOUR BASE

Contoured to grip surfaces dealing in vehicle stabilization kits

Net Weight: 1.7lb 0,8kg
Part No. 22-796270



TRIPOD HEAD

To be used in conjunction with either AcmeThread or LongShore struts to create a tripod

Net Weight: 9.0lb 4,1kg
Part No. 22-796010



MONOPOD HEAD / PULLEY

MonoPod Head / Pulley is designed for blind shaft elevator rescue, trench and high angle rescues

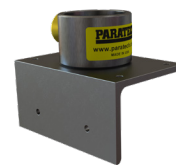
Net Weight: 7lb 3,2kg
Part No. 22-796540



HITCH BASE

Can be utilized by putting into a 2" hitch receiver and in conjunction with the MonoPod kit so you can have a high point anchor off of your vehicle

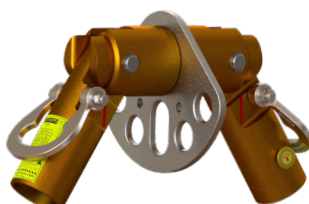
Net Weight: 13.4lb 6,1kg
Part No. 22-796575



ANGLE BASE

The angle base can be used just like the 4x4 or 6x6 bases. Designed for use when you cannot make full contact around the header or sole Plate.

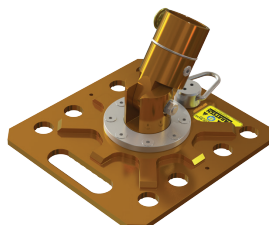
Net Weight: 1.6lb 0,7kg
Part No. 22-796092



BIPOD HEAD

The BiPod Head is to be used in conjunction with the (2) bipod base Plates to create the BiPod

Net Weight: 33 lb 15 kg
Part No. 22-796820



BIPOD BASE

The BiPod Base Plate is a 12 in / 30,5 cm base plate designed with the full articulating cup

Net Weight: 11.1lb 5,0kg
Part No. 22-796180E



CLAMP & CLEVIS

Designed for use with the Flying Raker and Midpoint brace kit in conjunction with the Raker Kits

Net Weight: 5.0lb 2,3kg
Part No. 22-796330



ANGLED RUBBER BASE

Angled rubber base used in conjunction with the elevator support arms lock elevator in position during rescues

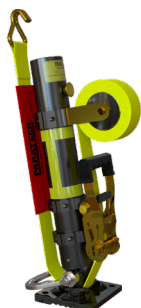
Net Weight: 1.7lb 0,8kg
Part No. 22-796266



ELEVATOR SUPPORT ARMS

Left and Right Elevator Support Arms used in conjunction with angled rubber base to lock elevator in position during rescues

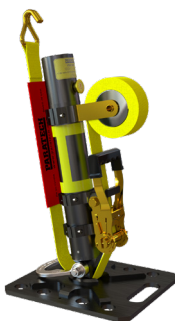
Net Weight: 8.5lb 3,9kg
Part No. 22-796260L or Part No. 22-796260R



VSK BASE 6

6 in / 15,2 cm base integrated with ratchet belt and anchor ring making vehicle stabilization quicker & easier

Net Weight: 18.5lb 8,4kg
Part No. 22-796331



VSK BASE 12

12 in / 30,5 cm base integrated with ratchet belt and anchor ring making vehicle stabilization quicker & easier

Net Weight: 23.5lb 10,6kg
Part No. 22-796308



Waler Rails



Part No.	Description	Net Weight: lb kg		Ship Weight: lb kg	
22-796295	Spot Shore Rail 18 in / 45,7 cm	11.2	5,1	13.2	6,0
22-796281	Waler Rail 6 ft / 1,8 m	42.8	19,4	44.8	20,3
22-796283	Waler Rail 8 ft / 2,4 m	58.7	26,6	60.7	27,5

Waler Systems

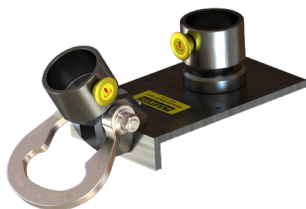
Part No.	Net Weight: lb kg	Ship Weight: lb kg
22-796282	501.6 227,6	529.6 240,2

Part No.	Description	Quantity	Part No.	Description	Quantity
22-796281	Waler Rail 6 ft / 1,8 m	4	22-796285	Stop Block	16
22-796283	Waler Rail 8 ft / 2,4 m	4	22-796287	Waler Connector	4

Waler Accessories

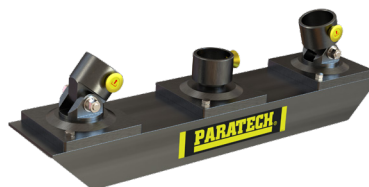
Inside Mechanical Thrust Block

Net Weight: 10.4lb 4,7kg
Part No. 22-796401



Outside Mechanical Thrust Block

Net Weight: 21.6lb 9,8kg
Part No. 22-796411



L-Trench Adapter Set

Net Weight: 8.4lb 3,8kg
Part No. 22-796425



Waler Stop Block

Net Weight: 1.0lb 0,5kg
Part No. 22-796285



Waler Connector

Net Weight: 19.9lb 9,0kg
Part No. 22-796287



LongShore Raker Rails

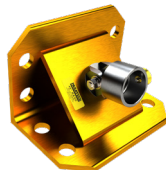


Part No.	Description	Net Weight: lb	kg	Ship Weight: lb	kg
22-796258B	Raker Rail 4 48 in / 122 cm	13.7	6,2	14.7	6,7
22-796258C	Raker Rail 6 72 in / 183 cm	20.7	9,4	21.7	9,8

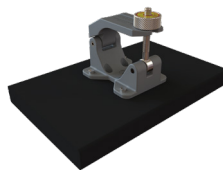
Raker Accessories



RAKER RAIL SPLICE
Net Weight: 7.5lb 3,4kg
Part No. 22-796469



45 DEGREE BASE
Net Weight: 13.5lb 6,1kg
Part No. 22-796690



NAILING PAD WITH CLAMP
Net Weight: 9.9lb 4,5kg
Part No. 22-796310



RAKER ANGLE BASE
Net Weight: 5.6lb 2,5kg
Part No. 22-796475



LATCH HOLDER
Net Weight: 4.2lb 1,9kg
Part No. 22-796689



RAKER RAIL LATCH
Net Weight: 3.2lb 1,5kg
Part No. 22-796250



RAKER JUNCTION BASE
Net Weight: 7.3lb 3,3kg
Part No. 22-796290



RAIL JUNCTION
Net Weight: 9.7lb 4,4kg
Part No. 22-796280



STRUT DISTRIBUTOR MODULE
Net Weight: 0.5lb 0,2kg
Part No. 22-796395



"FOR USE WITH DUAL CONTROLLER. CAN CONNECT UP TO 5 MODULES TO SHOOT 6 STRUTS AT ONE TIME."

Air Supply Components

DUAL DEADMAN STRUT CONTROLLER G3
250 PSI / 17.2 BAR
Net Weight: 3.1lb 1,6kg
Part No. 22-796103G3

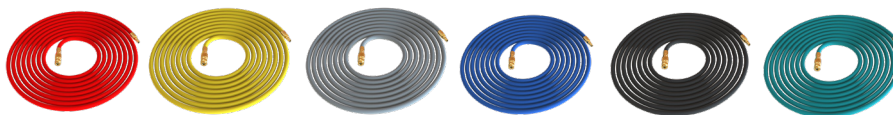


STRUT REGULATOR G3
5,500-0 PSI / 379.2-0 BAR
Part No. 22-895400G3 US
Net Weight: 3.8lb 1,7kg
Part No. 22-895400DG3 METRIC
Net Weight: 3.9lb 1,8kg



VSK V2 CONTROLLER
29 PSI / 1,9 BAR
Net Weight: 2.4lb 1,0kg
Part No. 22-796V02

Air Hoses



3/8 IN / 9.5 mm diameter

	RED	YELLOW	GRAY	BLUE	BLACK	GREEN
16 ft / 5 m (2.5 lb / 1,1 kg)	22-890516	22-890515	22-890518	22-890514	22-890513	22-890517
32 ft / 10 m (4.5 lb / 2,0 kg)	22-890521	22-890520	22-890525	22-890523	22-890522	22-890524
50 ft / 15 m (7.0 lb / 3,2 kg)	22-890541	22-890542	22-890545	22-890543	22-890546	22-890544

Trench Control Kit

Everything needed to address a trench rescue scenario. Deploy up to four struts at a time with the Strut Distributor Module and Dual Deadman Strut Controller

Part No.	Net Weight:	lb	kg
22-796TCK	US	53.4	34,2
22-796TCKD	METRIC		

Quantity	Part No.	Description
1	22-796103G3	Dual Deadman Strut Controller
1	22-895400G3	Strut Regulator G3 CGA / DIN
6	22-796395	Strut Distributor Module
1	22-890513	Air Hose, Black 16ft / 5m
2	22-890520	Air Hose, Yellow 32ft / 10m
2	22-890521	Air Hose, Red 32ft / 10m
1	22-890522	Air Hose, Black 32ft / 10m
1	22-890523	Air Hose, Blue 32ft / 10m
1	22-890524	Air Hose, Green 32ft / 10m
1	22-890525	Air Hose, Gray 32ft / 10m
1	22-796TCC	Carrying Case with Insert, Strut



Rescue Support Systems Accesories



Chain, 10mm X 6.1m w/ Hooks

Net Weight: 33.5lb 15,2kg
Part No. 22-796165EU
Part No. 22-796C1H



Ratchet Belt with Finger Hook 27 Ft / 8.2 M

Capacity: 3,300 lb / 1,497 kg Working
10,000 lb / 4,536 kg Breaking
Net Weight: 5.9lb 2,7kg
Part No. 22-890553



Tie Down Keys with J Hook

Net Weight: 5.0lb 2,3kg
Part No. 22-796161

Advanced Ty Strut Release Tool

The new patent pending Ty Strut Release Tool is designed to be used to place Paratech struts into a trench or hard to reach places and to tighten or loosen struts.

Net Weight: 2.2lb 1,0kg
Part No. 22-796845



Basic Ty Strut Release Tool

Ty Strut Release Tool without LockStroke Release Mechanism

Net Weight: 1.44lb 0,65kg
Part No. 22-796840



Shoring Hammer

The multi-functional shoring hammer

Net Weight: 2.9lb 1,3kg
Part No. 22-796430



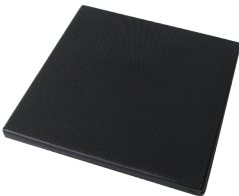
Clip 3.0IN / 7,6CM

(for AcmeThread & LockStroke Struts)
Net Weight: 0.6lb 0,3kg
Part No. 22-796182A



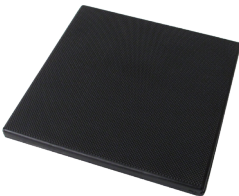
Clip 3.5IN / 8,9CM

(for LongShore Struts)
Net Weight: 0.8lb 0,8kg
Part No. 22-796185A



Non-Slip Neoprene Pad

15 x 15 x 1 IN
38,1 x 38,1 x 2,5 CM
Net Weight: 12.0lb 5,4kg
Part No. 22-890015



Double Headed Picket

1 in / 2.5 cm x 40 in / 101,6 cm
STL Picket Double Headed
Net Weight: 9.5lb 4,3kg
Part No. 22-796P14



RSS Carrying Strap

For use with all Paratech Rescue Struts
Net Weight: 0.6lb 0,2kg
Part No. 22-790060

RSS Carrying Handle

For use with both AcmeThread and LockStroke Struts and the AcmeThread Strut Driver
Net Weight: 2.4lb 1,1kg
Part No. 22-797042E



Manual Compressor

(2 Stage)
18.5 x 7.6 x 5.0 IN
47,0 x 19,3 x 12,7 CM
Net Weight: 14.7lb 6,7kg
Part No. 22-800400-180



Monopod/Pulley Kit

The Monopod Head & Pulley attach to the 610 LongShore Strut and can be used in applications such as high angle, elevator shaft, confined space and trench rescue. The kit includes the Monopod Head & Pulley, Tri-Anchor Ring, Angle Base, Roof Plate and also includes a black ballistic nylon carrying case.

Product Features:

- Pulley assembly allows the rope to come down the outside of the tube for ease of hoisting (5,000 lb / 2.268 kg capacity)
- 1,000 lb / 454 kg load capacity per hoist ring (4)
- Can be used with a life safety rope of up to 0.5 inch / 1.3 cm
- Monopod Head & Pulley Assembly is constructed of lightweight aluminum and stainless steel for strength and durability

Part No.	Description	Quantity
22-890340	Carry Case, MonoPod	1
22-796540	Monopod Head/Pulley	1
22-796595	Tri-Anchor	1
22-796180C	Hinged Base Plate 12 w/Anchor Ring	1

Part No.	Net Weight:	lb	kg
22-796530		43.0	19,5



HITCH BASE (optional)

Can be utilized by putting into a 2" hitch receiver and in conjunction with the Monopod kit so you can have a high point anchor off of your vehicle

Part No. 22-796575



Bipod Kit

The Bipod Kit is designed for use in various lifting and moving applications. It can be utilized in high angle, cliff overhangs, grain elevator rescue, confined space, trench, mine and open pit rescues. The kit includes Bipod Head and two Hinged Base Plates with Anchor Rings.

Product Features:

- 60° maximum spread angle with parallel max indication lines
- High strength hinged rotating anchor Plate
- Bipod Conversion Kit is constructed of lightweight aluminum and stainless steel for strength and durability

Part No.	Description	Quantity
22-796180E	Bipod Base Plate	2
22-796820	Bipod Head	1

Part No.	Net Weight:	lb	kg
22-796810		60.6	27,5



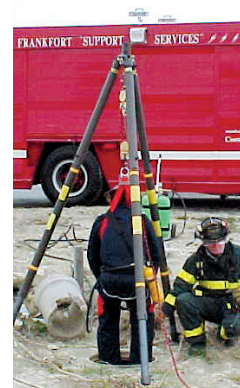
Tripod Kit

Designed to complement the Rescue Support System line, the Tripod kit is manufactured of lightweight aluminum and stainless steel for strength and durability. This kit is designed for use with your rescue struts already used in trench rescue, building collapse and vehicle stabilization. Attach the Tripod head to an AcmeThread, LockStroke or LongShore Strut and/or Extension to create a strong, stable support for tripod use as a jack stand and/or high support.

A durable carrying case makes transport easy.

Part No.	Description	Quantity
22-796010	Tripod Head	1
22-796150	Hinged Base with Anchor Ring	3
22-796155	30 ft Chain with Grab Hook	1
22-796305	Carrying Case, Tripod	1

Part No.	Net Weight:	lb	kg
22-796300		63.0	28,6



Elevator Support Unit Adapter Kit

Paratech's Elevator Support Unit (ESU) safely stabilizes an elevator and prevents it from moving. When deployed, the ESU causes zero to minimal damage to elevator cars and affords rescue teams precious time to extricate passengers and save lives. Two unique rescue base and end Plates form the core components of this system. An Angled Rubber Base attaches to either Rescue Strut and grips the floor, while the Elevator Support Arm attaches to the top of the Rescue Strut and hooks under the elevator car.

Part No.	Description	Quantity
22-796260L	Elevator Support Left Arm	1
22-796260R	Elevator Support Right Arm	1
22-796266	Angled Rubber Base	6
22-000915	Case, ESU Kit	1



Part No.	Net Weight: lb	kg
22-796260	27.2	12,3



Elevator Shaft Rescue Kit (ESR)

Elevator Shaft Rescue (ESR) Kit: designed in conjunction with City of Chicago and IFSI (University of Illinois Fire Service Institute) rescue professionals, this kit makes elevator shaft rescue easy and efficient through the creation of a wedged truss bar.

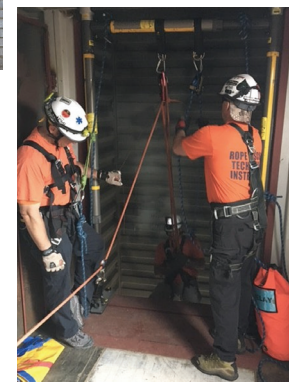
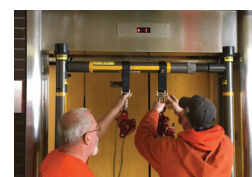
- **Fast and easy set up**
- **Can be set up in doorways, windows, elevator doors, blind shaft elevator hatches, industrial high points, ship board applications, etc.**
- **Adjustable base for longer door thresholds**
- **Removable angle on base for window high points**
- **Rubber foot plate does not mark or damage marble, granite or wooden floors**

Part No.	Description	Quantity
22-796266	Angled Rubber Base	2
22-796891	T-Junction	2
22-796905	Adjustable Hinged Base	2
22-796430	Shoring Hammer	1
22-796895	Header Swivel Base	2

*Struts Not Included in Kit



Part No.	Net Weight: lb	kg
22-796890K	41.48	19,44



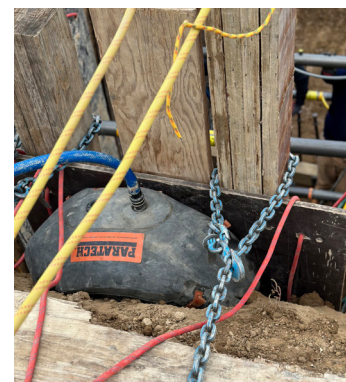
Trench Cushion Kit

Designed to tackle one of the biggest challenges in trench collapse rescue, this kit includes the equipment you need to support your shoring panels quickly and safely. With our system you can significantly reduce the time needed to backfill your shoring panels and maintain a vertical surface for support. Included in the kit are two low pressure cushions, 22-887010K with 3.3T(3,0t) capacity and 22-887015K with 5.1T(4,7t) capacity, that can fill up to a 24 in (61 cm) void. Each cushion is fitted with straps for ease of lowering into the trench and help in positioning the cushions along the sides of the trench wall. Combined with our Paratech Rescue Struts this kit will equip you with the right tools for your next trench rescue."

Part No.	Description	Quantity
22-887010K	B/K Cushion 5.1 Ton (4,7 t)	1
22-887015K	C/K Cushion 7.4 Ton (6,7 t)	1
22-887305G3	Dual Controller 14.5 psi / 0.5 bar	1
22-887400	Air Hose 1 in / 25,4 cm dia. x 20 ft / 6,1m Red	1
22-887401	Air Hose 1 in / 25,4 cm dia. x 20 ft / 6,1m Blue	1
22-890513	Air Hose 3/8 in / 9,5 dia. x 16 ft / 5m Black	1



Part No.	Net Weight: lb	kg
22-887070	85.5	38,8



Solid Sole Rakers & Accessories

Paratech offers the necessary accessories to convert our LongShore Struts into a fully deployable raker system that is fast, strong and easy to install. Paratech's innovative Raker accessories and LongShore Struts meet US&R requirements for strength and deployability. The Paratech LongShore System offers unique features and benefits ensuring proven performance every time the system is deployed.

Absolute Raker

Paratech once again sets a new standard, no wood, no pins, no chains...no hassle. The Absolute Raker provides flexibility, functionality and economy. Never worry about wood again—fully deployable in minutes—or easily turn your existing Paratech Raker into an Absolute Raker, with the Standard to Absolute Upgrade Kit. Interoperational with all Paratech Rescue Support Systems, as always.



Absolute Raker Set

Part No.	Description	lb	kg
22-796984	Absolute Raker Set	795.3	360,7

Part No.	Description	Quantity
22-796180C	Hinged Base 12 w/ Anchor Ring	2
22-796250	Raker Rail Latch	4
22-796258C	Raker Rail 6	4
22-796280	Raker Rail Junction	2
22-796290	Raker Junction Base	2
22-796330	Clamp and Clevis	12
22-796342	LongShore Extension 235	7
22-796350	LongShore Adjustable Brace B57	7
22-796356	LongShore Extension 435	2
22-796360	LongShore Strut 610	4
22-796376	LongShore Extension 635	2
22-796469	Raker Rail Splice	2
22-796475	Raker Angle Base	2
22-796656	Rail 4 Latch Holder	1

Double Absolute Raker Set

The double absolute raker set can create an 18 ft (5,5m) vertical insertion point double raker, or be recombined to create 3 separate flying rakers with up to 40 ft (12,2m) of horizontal coverage.

Part No.	Description	lb	kg
22-796981	Double Absolute Raker Set	795.3	360,7

Part No.	Description	Quantity
22-796180C	Hinged Base 12 w/ Anchor Ring	6
22-796250	Raker Rail Latch	12
22-796258C	Raker Rail 6	6
22-796280	Raker Rail Junction	2
22-796290	Raker Junction Base	2
22-796330	Clamp and Clevis	24
22-796348	LongShore Adjustable Brace B23	6
22-796350	LongShore Adjustable Brace B57	9
22-796341	LongShore Extension 135	2
22-796342	LongShore Extension 235	9
22-796360	LongShore Strut 610	6
22-796376	LongShore Extension 635	6
22-796469	Raker Rail Splice	4
22-796475	Raker Angle Base	6
22-796689	Latch Holder	3
22-796430	Shoring Hammer	2



Absolute Flying Raker

Paratech fully mechanical Absolute Flying Raker Sets leave the wood behind. Stronger, faster and easier than wood, the Absolute Flying Raker in 8 ft (2,4 m) sets, allow rescue teams to build rakers around the rubble pile.

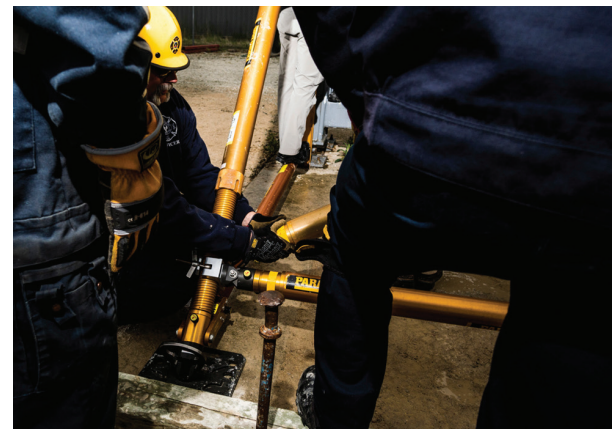
Use the Woodless Flying Raker kit upgrade to upgrade a Standard Flying Raker to an Absolute Woodless Flying Raker. Interoperational with all Paratech Rescue Support Systems, as always.



Absolute Flying Raker Set

Part No.	Description	lb	kg
22-796984F	Absolute Flying Raker Set	535.9	243,1

Part No.	Description	Quantity
22-796180C	Hinged Base 12 w/ Anchor Ring	2
22-796258C	Raker Rail 6	2
22-796330	Clamp and Clevis	12
22-796342	LongShore Extension 235	4
22-796350	LongShore Adjustable Brace B57	5
22-796348	LongShore Adjustable Brace B23	2
22-796356	LongShore Extension 435	2
22-796360	LongShore Strut 610	2
22-796376	LongShore Extension 635	2
22-796475	Raker Angle Base	2
22-796656	Rail 4 Latch Holder	1
22-796250	Raker Rail Latch	4

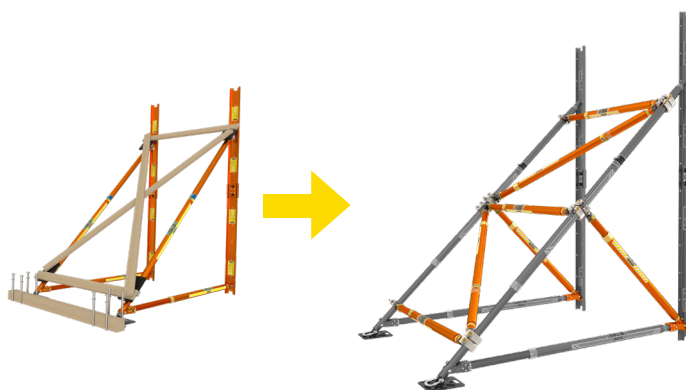


Standard to Absolute Raker Upgrade Kit

The standard to absolute raker upgrade kit changes your deployable solid sole raker into an absolute raker. It removes the need for wood bracing and replaces it with high strength fully mechanical cross-bracing and midpoint braces.

Part No.	Description	lb	kg
22-796983	Standard Raker to Absolute Raker Upgrade	354.3	160,7

Part No.	Description	Quantity
22-796280	Rail Junction	2
22-796330	Clamp and Clevis	12
22-796342	LongShore Extension 235	5
22-796350	LongShore Adjustable Brace B57	7

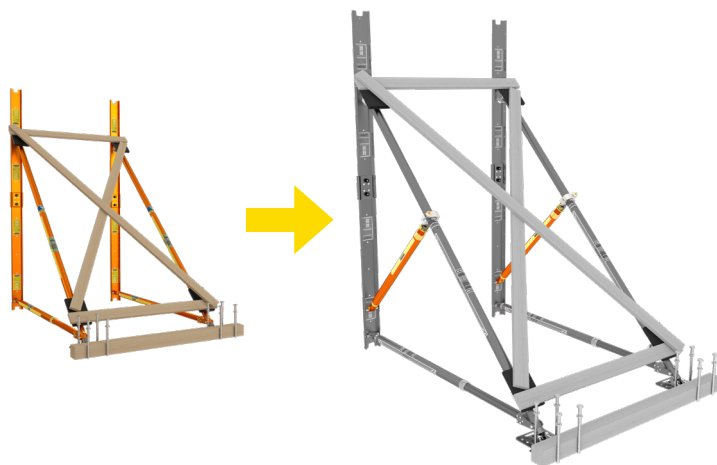


Raker Midpoint Brace Kit

The mid point brace kit can be utilized with the Raker Sets and will greatly increase the strength of your Raker Kit. Adding this item to your Raker Set will guarantee you have the strongest raker.

Kit Part No.	Net Weight:	lb	kg
22-796484		97.6	44,3

Part No.	Description	Quantity
22-796350	Adjustable Brace Model B57	2
22-796250	Raker Rail Latch	2
22-796330	Clamp 335 & Clevis	2

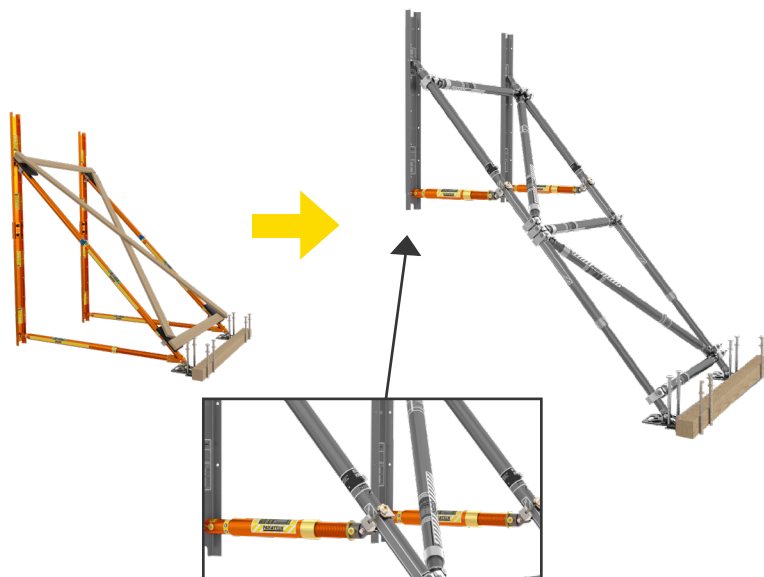


Flying Raker Kit

Add this kit to your Standard Raker Kit to turn it into a Flying Raker.

Kit Part No.	Net Weight:	lb	kg
22-796486		46.8	21,2

Part No.	Description	Quantity
22-796348	Adjustable Brace Model B23	2
22-796250	Raker Rail Latch	2
22-796330	Clamp 335 & Clevis	2

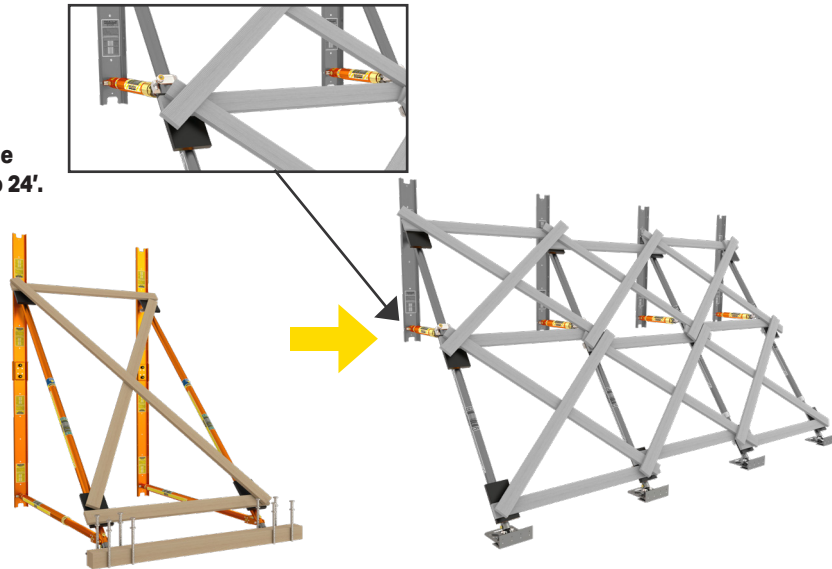


Raker Expansion Kit

Increase your Raker Set capacity by adding this additional cache of equipment and increase your wall support capacity from 8' to 24'.

Kit Part No.	Net Weight:	lb	kg
22-796485			143.8

Part No.	Description	Quantity
22-796180C	Base Plate 12 12 in / 30,5 cm	2
22-796475	Raker Angle Base	2
22-796310	Nailing Pad with Clamp	6
22-796486	Flying Raker Kit (qty. 2 kits below)	2
22-796348	Adjustable Brace Model B23	4
22-796250	Raker Rail Latch	4
22-796330	Clamp 335 & Clevis	4



Woodless Flying Raker Brace Kit

Use this kit to upgrade your Flying Raker to an Absolute Flying Raker

Part No.	Description	lb	kg
22-796487	Woodless Flying Raker Brace Kit Absolute Raker Upgrade	231.9	105,2

Part No.	Description	Quantity
22-796330	Clamp and Clevis	10
22-796342	LongShore Extension 235	2
22-796350	LongShore Adjustable Brace B57	5



High Strength Structural Kit

The Paratech High Strength Structural Kit is designed to cope with the heaviest loads seen in USAR. The HSSK combines 3 heavy duty LongShore shoring struts, the strongest shores Paratech produces, and combines them into a single shoring configuration using a simple and easy to install hand tightened tri-brace. The tri-brace ties the shores together and provides rescuers 3X the load rating listed shoring capacity of the tabulated data on the LongShore strut at a given length. The HSSK can be used to shore the extremely heavy loads at length such as replacing damaged columns in a compromised structure.

Part No.	Description	lb	kg
22-796HSSK	High Strength Structural Kit	231.9	105,2

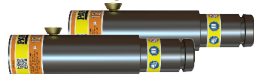
Part No.	Description	Quantity
22-796395	Strut Distributor Module	2
22-796399	Tri-Brace	1
22-796680	Tri-Base	2
22-890520	32 ft Hose, Yellow w/ Couplings	1
22-890521	32 ft Hose, Red w/ Couplings	1
22-890522	32 ft Hose, Black w/ Couplings	1



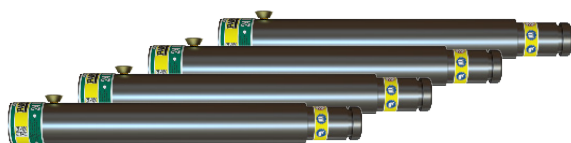
Rescue Support Systems

Basic 12 Shore Trench Kit

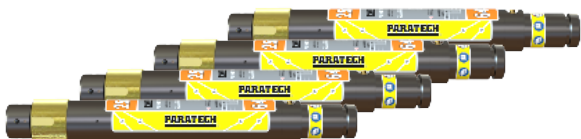
This kit gives the rescuer the ability to construct up to 12 shores for use in a trench rescue. With the available air controls and vibrant colored hoses, this is a great starter trench kit.



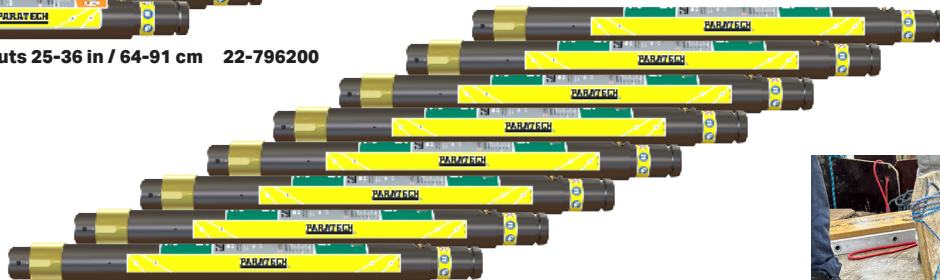
2 - Strut Extension 12 in / 30 cm 22-796012



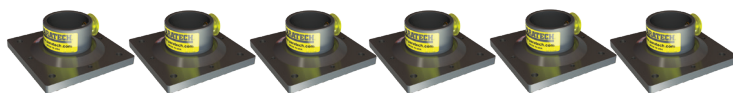
4 - Strut Extension 24 in / 61 cm 22-796024



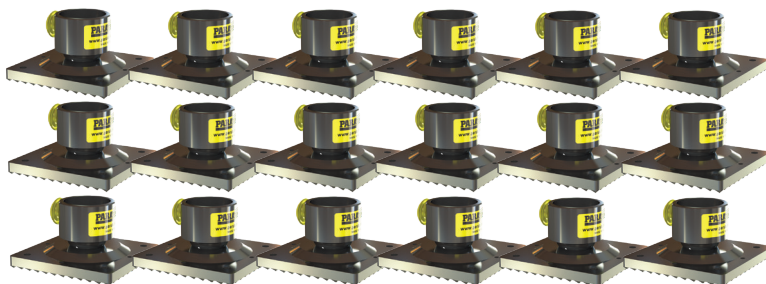
4 - AcmeThread Struts 25-36 in / 64-91 cm 22-796200



8 - AcmeThread Struts 37-58 in / 94-147 cm 22-796202



6 - Square Rigid Base 6 in / 15,2 cm 22-796070



18 - Square Swivel Base 6 in / 15,2 cm 22-796060



2 - Air Hose
3/8 in / 9.5 mm dia. x 16 ft / 5 m
Yellow 22-890515



2 - Air Hose
3/8 in / 9.5 mm dia. x 32 ft / 10 m
Yellow 22-890520



2 - Air Hose
3/8 in / 9.5 mm dia. x 16 ft / 5 m Red
22-890516



2 - Air Hose
3/8 in / 9.5 mm dia. x 32 ft / 10 m Red 22-890521



1 - Dual Deadman Strut
Controller G3
250 psi / 17,2 bar
22-796103G3



4 - Shoring Hammer
22-796430



1 - Strut Regulator G3
5,500-300 psi / 379.2-20,7 bar
22-895400G3

Kit Part No.	Net Weight:	lb	kg
22-796860 US		374.6	169,9
22-796860D Metric		231.9	105,2

Part No.	Description	Quantity
22-796200	AcmeThread Strut 25-36 in / 64-91 cm	4
22-796202	AcmeThread Strut 37-58 in / 94-147 cm	8
22-796012	Strut Extension 12 in / 30 cm	2
22-796024	Strut Extension 24 in / 61 cm	4
22-796060	Square Swivel Base 6 in / 15.2 cm	18
22-796070	Square Rigid Base 6 in / 15.2 cm	6
22-796103G3	Dual Deadman Strut Controller G3 250 psi / 17.2 bar	1
22-895400G3	Strut Regulator G3 CGA / DIN	1
22-890515	Air Hose 3/8 in / 9.5 mm dia. x 16 ft / 5 m Yellow	2
22-890520	Air Hose 3/8 in / 9.5 mm dia. x 32 ft / 10 m Yellow	2
22-890516	Air Hose 3/8 in / 9.5 mm dia. x 16 ft / 5 m Red	2
22-890521	Air Hose 3/8 in / 9.5 mm dia. x 32 ft / 10 m Red	2
22-796430	Shoring Hammer	4



16 Shore Trench Kit

This kit gives the rescuer the ability to construct up to 16 shores for use in a trench rescue. With the available Trench Cushions to fill void spaces and the air controls & vibrant colored hoses, this is a great kit for your Trench Rescue needs.



4 - Strut Extension 6 in / 15 cm 22-796017



6 - Strut Extension 12 in / 30 cm 22-796012



6 - Strut Extension 24 in / 61 cm 22-796024



2 - LockStroke Struts 25-36 in / 64-91 cm 22-796000



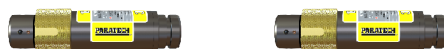
2 - AcmeThread Struts 37-58 in / 94-147 cm 22-796202



4 - AcmeThread Struts 25-36 in / 64-91 cm 22-796200



6 - AcmeThread Struts 19-25 in / 48-64 cm 22-796206



2 - AcmeThread Struts 12-15 in / 31-38 cm 22-796212



1 - Dual Deadman Strut Controller G3
250 psi / 17.2 bar
22-796103G3



4 - Shoring Hammer
22-796430



1 - Strut Regulator G3
5,500-300 psi / 379.2-20.7 bar
22-895400G3



1 - B/K Cushion 5.1 Ton (4,7 t)
22-887010K

1 - C/K Cushion 7.4 Ton (6,7)
887015K



Trench Cushion Controller
7.25 psi
22-887305G3



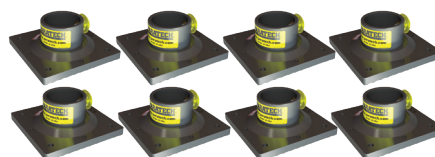
1 - Air Hose
1 in / 25.4 mm dia. x 20 ft / 6.1 m
Red
22-887400



1 - Air Hose
1 in / 25.4 mm dia. x 20 ft /
6.1 m Blue
22-887401



1 - Air Hose
3/8 in / 9.5 mm dia. x 16 ft / 5
m Black
22-890513



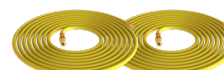
8 - Square Rigid Base 6 in / 15.2 cm 22-796070



4 - Strut Distributor Module
(2 couplings, 1 nipple)
22-796395



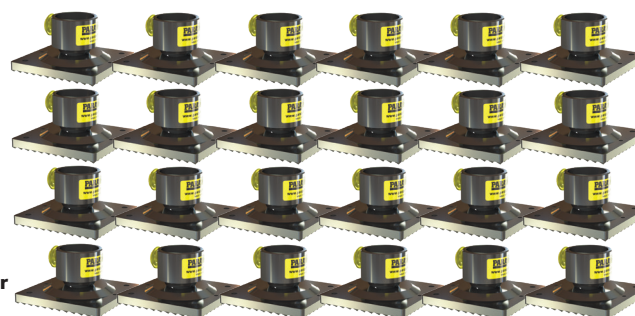
1 - Air Hose
3/8 in / 9.5 mm dia. x 16 ft / 5 m
Black 22-890513



2 - Air Hose
3/8 in / 9.5 mm dia. x 32
ft / 10 m Yellow 22-
890520



2 - Air Hose
3/8 in / 9.5 mm dia. x 32 ft /
10 m Red
22-890521



24 - Square Swivel Base 6 in / 15.2 cm 22-796060

Kit Part No.	Net Weight:	lb	kg
22-796862	US	445.8	202,2
22-796862D	Metric	446.7	202,6

Part No.	Description	Quantity
22-796212	AcmeThread Strut 12-15 in / 31-38 cm	2
22-796206	AcmeThread Strut 19-25 in / 48-64 cm	6
22-796200	AcmeThread Strut 25-36 in / 64-91 cm	4
22-796202	AcmeThread Strut 37-58 in / 94-147 cm	2
22-796000	LockStroke Strut 25-36 / 64-91 cm	2
22-796017	Strut Extension 6 in / 15 cm	4
22-796012	Strut Extension 12 in / 30 cm	6
22-796024	Strut Extension 24 in / 61 cm	6
22-796103G3	Dual Deadman Strut Controller G3 250 psi / 17,2 bar	1
22-895400G3	Strut Regulator G3 5,500-300 psi / 379.2-20,7 bar	1
22-890520	Air Hose 3/8 in / 9,5 mm dia. x 32 ft / 10 m Yellow	2
22-890521	Air Hose 3/8 in / 9,5 mm dia. x 32 ft / 10 m Red	2
22-890513	Air Hose 3/8 in / 9,5 mm dia. x 16 ft / 5 m Black	1
22-796395	Strut Distributor Module (2 coupling, 1 nipple)	4
22-796060	Square Swivel Base 6 in / 15,2 cm	24
22-796070	Square Rigid Base 6 in / 15,2 cm	8
22-796430	Shoring Hammer	4

22-887070	Trench Cushion Kit (qty. 1 kit below)	1
22-887010K	B/K Cushion 5.1 Ton (4,7 t)	1
22-887015K	C/K Cushion 7.4 Ton (6,7t)	1
22-887305G3	Dual Controller 14.5 psi / 0.5 bar	1
22-887400	Air Hose 1 in / 25.4 mm dia. x 20 ft / 6.1 m Red	1
22-887401	Air Hose 1 in / 25.4 mm dia. x 20 ft / 6.1 m Blue	1
22-890513	Air Hose 3/8 in / 9.5 mm dia. x 16 ft / 5 m Black	1

Rescue Support Systems

Light US&R Rescue Strut System

This system affords the rescuer the ability to tackle most structural collapse scenarios. The system includes (1) Raker set and numerous Rescue Struts and components which would be a great start to any Fire Department looking to be more involved in structural collapse incidents.



2 - LongShore 610 Struts 72-116 in / 183-295 cm 22-796360



2 - AcmeThread Struts 56-88 in / 142-224 cm 22-796204



2 - AcmeThread Struts 37-58 in / 94-147 cm 22-796202



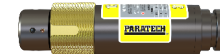
2 - AcmeThread Struts 25-36 in / 64-91 cm 22-796200



2 - Strut Extension 36 in / 91 cm 22-796036



2 - Strut Extension 12 in / 30 cm 22-796012



2 - AcmeThread Struts 12-15 in / 31-38 cm 22-796212



2 - AcmeThread Struts 19-25 in / 48-64 cm 22-796206



2 - Strut Extension 24 in / 61 cm 22-796024



2 - Rescue Guardian 22-796RG1



1 - Air Hose
3/8 in / 9.5 mm dia. x 32 ft / 10 m Red
22-890521

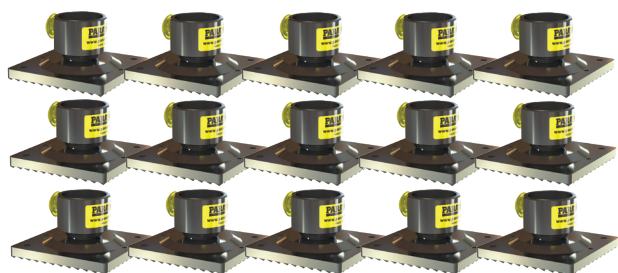


1 - Air Hose
3/8 in / 9.5 mm dia. x 32 ft / 10 m Black
22-890522

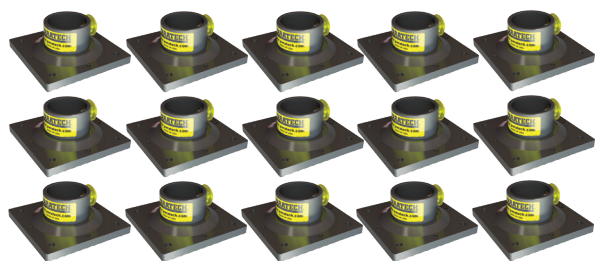


1 - Air Hose
3/8 in / 9.5 mm dia. x 32 ft / 10 m Yellow
22-890520

Rescue Support Systems



15 - Square Swivel Base 6 in / 15,2 cm 22-796060



15 - Square Rigid Base 6 in / 15,2 cm 22-796070



4 - Shoring Hammer
22-796430



1 - Dual Deadman
Strut Controller G3
250 psi / 17,2 bar
22-796103G3



1 - Strut Regulator G3
5,500-300 psi / 379,2-20,7 bar
22-895400G3

22-796984 Absolute Raker Set



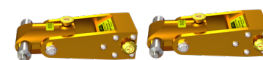
7 - LongShore Extension 235 24 in / 61 cm 22-796342



2 - Raker Junction Base
22-796290



2 - Raker Angle Base
22-796475



2 - Raker Rail Junction
22-796280



4 - LongShore Strut 610 72-116 in / 183-295 cm 22-796360



2 - LongShore Extension 435 48 in / 122 cm 22-796356



2 - LongShore Extension 635 67 in / 170 cm 22-796376



2 - Raker Rail Splice 22-796469



1 - Latch Holder
22-796689



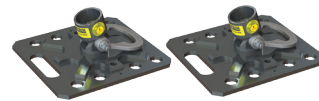
4 - Raker Rail Latch 22-796250



7 - LongShore Adjustable Brace B57 60-85 in / 152-216 cm 22-796350



12 - Clamp and Clevis 22-796330



2 - Hinged Base Plate 12 in / 30,5 cm
22-796180C

System Part No.		Net Weight:	lb	kg
22-796901	US		740.1	335,7
22-796901M	Metric		740.1	335,7

Part No.	Description	Quantity
22-796212	AcmeThread Strut 12-15 in / 31-38 cm	2
22-796206	AcmeThread Strut 19-25 in / 48-64 cm	2
22-796200	AcmeThread Strut 25-36 in / 64-91 cm	2
22-796202	AcmeThread Strut 37-58 in / 94-147 cm	2
22-796204	AcmeThread Strut 56-88 in / 142-224 cm	2
22-796360	LongShore Strut 610, 72-116 in / 183-295 cm	2
22-796012	Strut Extension 12 in / 30 cm	2
22-796024	Strut Extension 24 in / 61 cm	2
22-796036	Strut Extension 36 in / 91 cm	2
22-796060	Square Swivel Base 6 in / 15,2 cm	15
22-796070	Square Rigid Base 6 in / 15,2 cm	15
22-796103G3	Dual Deadman Strut Controller G2 250 psi / 17,2 bar	1
22-895400G3	Strut Regulator G3 CGA / DIN	1
22-796RG1-2K	Rescue Guardian 20,000 lbs.	2
22-890520	Air Hose 3/8 in / 9.5 mm dia. x 32 ft / 10 m Yellow	1
22-890521	Air Hose 3/8 in / 9.5 mm dia. x 32 ft / 10 m Red	1
22-890522	Air Hose 3/8 in / 9.5 mm dia. x 32 ft / 10 m Black	1
22-796430	Shoring Hammer	4

22-796984	Absolute Raker Set (qty. 1 kit below)	1
22-796180C	Hinged Base 12 w/ Anchor Ring	2
22-796250	Raker Rail Latch	4
22-796258C	Raker Rail 6	4
22-796280	Raker Rail Junction	2
22-796290	Raker Junction Base	2
22-796330	Clamp and Clevis	12
22-796342	LongShore Extension 235	7
22-796350	LongShore Adjustable Brace B57	7
22-796356	LongShore Extension 435	2
22-796360	LongShore Strut 610	4
22-796376	LongShore Extension 635	2
22-796469	Raker Rail Splice	2
22-796475	Raker Angle Base	2
22-796689	Rail 4 Latch Holder	1

US&R Rescue Strut System

The US&R Rescue Strut System is one of the most complete structural collapse systems that has been standardized by the FEMA US&R teams. For any team serious about Urban Search & Rescue, this is the system to make it happen. The system includes (2) 6' Raker sets and numerous Rescue Struts and components to handle almost any disaster that the rescuers are faced with.



4 - LongShore 610 Struts 72-116 in / 183-295 cm 22-796360



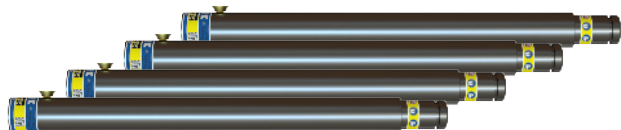
4 - AcmeThread Struts 56-88 in / 142-223 cm 22-796204



4 - AcmeThread Struts 37-58 in / 94-147 cm 22-796202



4 - AcmeThread Struts 25-36 in / 64-91 cm 22-796200



4 - Strut Extension 36 in / 91 cm 22-796036



2 - Rescue Guardian 22-796RG1-2K



4 - Strut Extension 12 in / 30 cm 22-796012



4 - AcmeThread Struts 12-15 in / 31-38 cm 22-796212

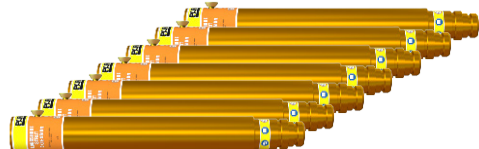


4 - AcmeThread Struts 19-25 in / 48-64 cm 22-796206



4 - Strut Extension 24 in / 61 cm 22-796024

22-796984 Absolute Raker Set



7 - LongShore Extension 235 24 in / 61 cm 22-796342



4 - LongShore Strut 610 72-116 in / 183-295 cm 22-796360



2 - LongShore Extension 435 48 in / 122 cm 22-796356



2 - LongShore Extension 635 67 in / 170 cm 22-796376



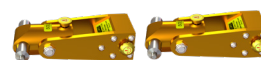
4 - Raker Rail 6 72 in / 183 cm 22-796258C



2 - Raker Junction Base 22-796290



2 - Raker Angle Base 22-796475



2 - Raker Rail Junction 22-796280



1 - Latch Holder 22-796689



4 - Raker Rail Latch 22-796250



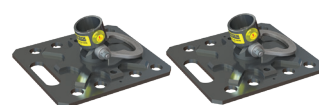
2 - Raker Rail Splice 22-796469



7 - LongShore Adjustable Brace B57 60-85 in / 152-216 cm 22-796350

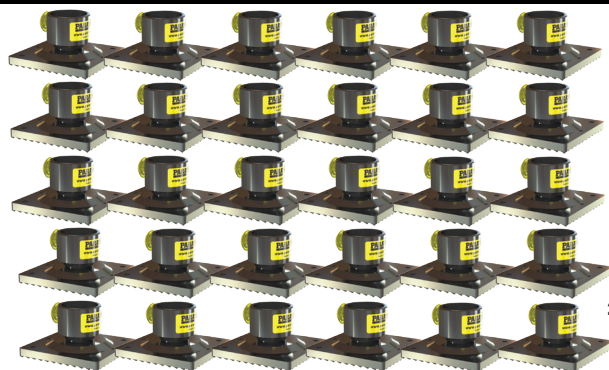


12 - Clamp and Clevis 22-796330



2 - Hinged Base Plate 12 in / 30.5 cm 22-796180C

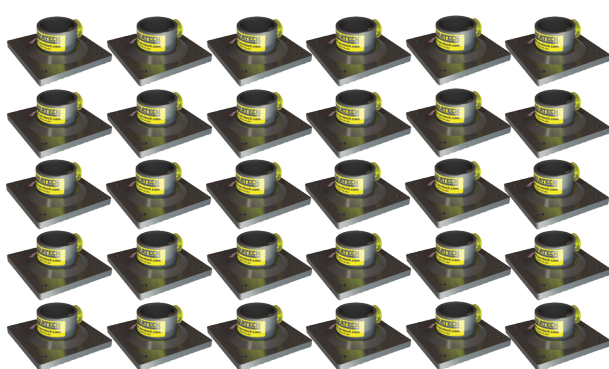
Rescue Support Systems



30 - Square Swivel Base 6 in / 15.2 cm 22-796060



2 - Strut Regulator G3
5,500-0 psi
379.2-0 bar
22-895400G3



30 - Square Rigid Base 6 in / 15.2 cm 22-796070



2 - Dual Deadman
Strut Controller G3
250 psi / 17.2 bar
22-796103G3



2 - Air Hose
3/8 in / 9.5 mm dia.
x 32 ft / 10m Yellow
22-890520



2 - Air Hose
3/8 in / 9.5 mm dia.
x 32 ft / 10 m Red
22-890521



2 - Air Hose
3/8 in / 9.5 mm dia.
x 32 ft / 10 m Black
22-890522



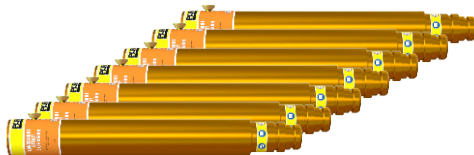
8 - Shoring Hammer
22-796430

System Part No.	Net Weight:	lb	kg
22-796900	US	1713.6	777,3
22-796900M	Metric	777.3	777,3

Part No.	Description	Quantity
22-796212	AcmeThread Strut 12-15 in / 31-38 cm	4
22-796206	AcmeThread Strut 19-25 in / 48-64 cm	4
22-796200	AcmeThread Strut 25-36 in / 64-91 cm	4
22-796202	AcmeThread Strut 37-58 in / 94-147 cm	4
22-796204	AcmeThread Strut 56-88 in / 142-224 cm	4
22-796360	LongShore Strut 610, 72-116 in / 183-295 cm	4
22-796012	Strut Extension 12 in / 30 cm	4
22-796024	Strut Extension 24 in / 61 cm	4
22-796036	Strut Extension 36 in / 91 cm	4
22-796060	Square Swivel Base 6 in / 15.2 cm	30
22-796070	Square Rigid Base 6 in / 15.2 cm	30
22-796103G3	Dual Deadman Strut Controller G3 250 psi / 17,2 bar	2
22-895400G3	Strut Regulator G3 CGA / DIN	2
22-796RG1-2K	Rescue Guardian.	4
22-890520	Air Hose 3/8 in / 9,5 mm dia. x 32 ft / 10 m Yellow	2
22-890521	Air Hose 3/8 in / 9,5 mm dia. x 32 ft / 10 m Red	2
22-890522	Air Hose 3/8 in / 9,5 mm dia. x 32 ft / 10 m Black	2
22-796430	Shoring Hammer	8

22-796984	Absolute Raker Set (qty. 2 kits below)	2
22-796180C	Hinged Base 12 w/ Anchor Ring	4
22-796250	Raker Rail Latch	8
22-796258C	Raker Rail 6	8
22-796280	Raker Rail Junction	4
22-796290	Raker Junction Base	4
22-796330	Clamp and Clevis	24
22-796342	LongShore Extension 235	14
22-796350	LongShore Adjustable Brace B57	14
22-796356	LongShore Extension 435	4
22-796360	LongShore Strut 610	8
22-796376	LongShore Extension 635	4
22-796469	Raker Rail Splice	4
22-796475	Raker Angle Base	4
22-796889	Rail 4 Latch Holder	2

22-796984 Absolute Raker Set



7 - LongShore Extension 235 24 in / 61 cm 22-796342



4 - LongShore Strut 610 72-116 in / 183-295 cm 22-796360



2 - LongShore Extension 435 48 in / 122 cm 22-796356



2 - LongShore Extension 635 67 in / 170 cm 22-796376



4 - Raker Rail 6 72 in / 183 cm 22-796258C



2 - Raker Junction Base
22-796290



2 - Raker Angle Base
22-796475



2 - Raker Rail Junction
22-796280



1 - Latch Holder
22-796689



4 - Raker Rail Latch 22-796250



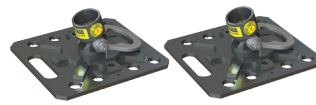
2 - Raker Rail Splice 22-796469



7 - LongShore Adjustable Brace B57 60-85 in / 152-216 cm 22-796350



12 - Clamp and Clevis 22-796330



2 - Hinged Base Plate 12 in / 30,5 cm
22-796180C

Vehicle Stabilization Kits

Vehicle Stabilization Kit

Paratech Vehicle Stabilization Kits have the strength and flexibility to handle any size vehicle anytime, anywhere. This includes sub compact cars, buses, cement trucks and even train locomotives. Additionally, these components provide the extra value of being completely interchangeable with your other Paratech equipment for building collapse and trench rescue scenarios. They are strong, sturdy and reliable. Paratech systems are the easiest to use and the strongest VSKs on the market today.

VSK Comparison

	Supporter	Standard	Highway	Interstate
Max Load	10,000lb / 4.536kg	40,000lb / 18.143kg	80,000lb / 36.287kg	120,000lb / 54.431 kg
# of AcmeThread Struts	0	2	4	0
# of LongShore Struts	0	0	0	6
# of Extensions	1	4	6	6
# of Bases	1	4	8	18
# of Ratchet Belts	1 (Attached)	4	4	6

With the highest industry safety standard, Paratech's VSK can hold 10,000lb / 4.536kg up to 120,000lb / 54.431kg. Paratech vehicle stabilization kits have the strength & flexibility to handle any size vehicle anytime, anywhere.



VSK V2 Controller

Safely use compressed air to extend struts! This innovative controller is capable of extending the heaviest combination of struts and extensions with a simple on / off control. Its low 29 PSI / 2Bar pressure reduction and unique automatic vent relief feature, eliminates the fear of over pressurizing in the event of a load shift, ensuring a secure and steady strut extension. Ideal for safely chasing stabilization struts while performing a lift.

NOW WITH TWO AIR OUTLETS!

Net Weight: 2.4 lbs 1,0 kg

Part No. 22-796V02



**Double Male Nipple
Part No. 22-890730**

**Plug Tether
Part No. 22-890717**



**Coupling Plug
Part No. 22-890715**

Supporter X2- All-In-One Vehicle Stabilizer

The 'ALL IN ONE' Vehicle Stabilizer!
Stronger, Faster, Safer!

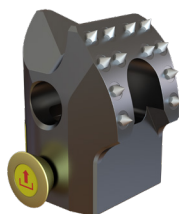
When you need to stabilize a vehicle accident scene quickly, there is nothing faster or stronger. With the TwistLock Collar all you need to do is TWIST, EXTEND, LOCK and the SUPPORTER can stabilize 10,000 lb / 4,536 kg with a 2:1 safety factor at ANY height.

**Maximum load up to 10,000 lb / 4.536 kg
 with a 2:1 safety factor**

- Easy Extra Extension Ability
- Weight: 35.0 lb / 15,9 kg
- Collapsed, Base on Ground
40 in / 101,6 cm
- Extended, Base on Ground
65.4 in / 166,1 cm
- Extended with Extension
95.4 in / 242,3 cm

Kit Part No.	Net Weight:	lb	kg
22-797E12E	SUPPORTER X2	35.0	15,9

**Quick Super
 Extension to
 95.4 in / 242,3 cm**



**Spike Base
 Positive Grip
 Shackle Hole
 Angle Indicator
 Replaceable Spikes
 Integrated V &
 Cone Base**



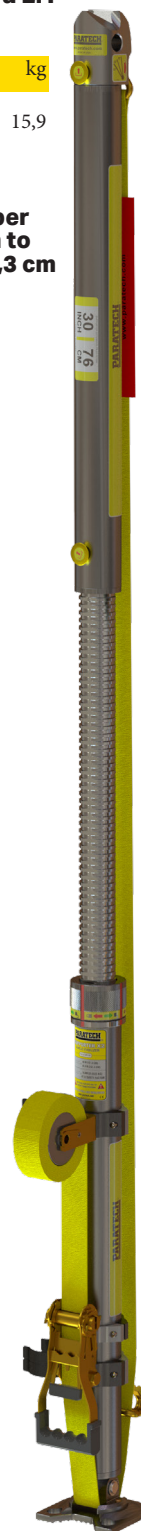
**Quick
 Extension To
 70.0 in / 177,8 cm**

**Twist-Lock
 Collar**

**Auto-Rewind
 Belt**

**Integrated
 Ratchet Belt**

**90° Base
 Folds Flat For
 Easy Storage**



Vehicle Stabilization Kits

VSK Base Kits

Bases integrated with ratchet belt and anchor ring, ready for rapid deployment, making vehicle stabilization quicker & easier.

VSK Base 6 Kit Part No.	Net Weight:	lb	kg
22-796303		25.9	11,7

Part No.	Description	Quantity
22-796331	VSK Base 6	1
22-797042E	Adjustable Carrying Handle	1
22-796161	Tie-Down Keys w/J Hook	1

Product Features:

- Fast and Easy to Deploy
- Available with Small or Large Size Base Foot
- Integrated Anchor Ring for Multiple Ratchet Belt Usage
- Built in Ratchet Keeps Hot Zone Free Of Tripping Hazard from Unused Belt
- Compatible with All Of Paratech's Acmethread and Lockstroke Rescue Support System Components

VSK Base 12 Kit Part No.	Net Weight:	lb	kg
22-796309		30.9	14,0

Part No.	Description	Quantity
22-796308	VSK Base 12	1
22-797042E	Adjustable Carrying Handle	1
22-796161	Tie-Down Keys w/J Hook	1

1 - Adjustable Carrying Handle
22-797042E

1 - Tie Down Keys with J Hook
22-796161

1 - Adjustable Carrying Handle
22-797042E

1 - Tie Down Keys with J Hook
22-796161

**Load Capacity of
20,000 Lbs. / 9.071,8 Kg
with a 4:1 Safety Factor.**

Standard VSK

Paratech's flagship kit and the "standard" when addressing your stabilization needs. This kit covers everything from small vehicles to large commercial/municipal vehicles.

**Maximum load up to 40,000 lb / 18.144 kg
with a 4:1 safety factor**

Kit Part No.	Net Weight:	lb	kg
22-796850		97.3	144,2

Part No.	Description	Quantity
22-796200	Acme Thread Strut 25-36 in / 64-91 cm	2
22-796012	Strut Extension 12 in / 30 cm	2
22-796024	Strut Extension 24 in / 61 cm	2
22-796025	Multi-Base	2
22-796180C	Hinged Base w/Anchor Ring 12 in / 30 cm	2
22-890553	Ratchet Belt w/Finger Hook 27 ft / 8.2 m	4
22-796161	Tie Down Keys w/J Hook	2

2 - Strut Extensions 12 in / 30 cm 22-796012

2 - Strut Extension 24 in / 61 cm 22-796024

2 - AcmeThread Struts 25-36 in / 64-91 cm 22-796200

4 - Ratchet Belt with Finger Hook 27 ft / 8.2 m
22-890553

2 - Tie Down Keys with J Hook
22-796161

2 - Hinged Base with Anchor Ring 12 in / 30 cm
22-796180C

2 - Multi-Base
22-796025



Heavy Vehicle Extrication Kit

The most comprehensive heavy lifting kit available, utilizing the strength of HydraFusion Struts, lifting height and power of the MULTIFORCE in the Rapid Extrication Kit, as well as the environmentally friendly sturdiness of recycled plastic cribbing PLUS much more. With this Kit you can lift and stabilize any SIZE vehicle on the road. All packed up in 4 convenient, mobile carrying cases.

22-88HVEK Heavy Vehicle Extrication Kit
22-88HVEKD Heavy Vehicle Extrication Kit DIN

Weight 1,259.1 lbs/ 571,1 kg

Part No.	Description	Quantity
22-79HA10K	HydraFusion 10 Kit	2
22-796035	Extension Converter	2
22-796180C	Hinged Base Plate w/ Anchor Ring 12 in / 30 cm	6
22-88DREK	Rapid Extrication Kit	1
22-796720	LongShore Strut 304 36-50 in / 91-127 cm	2
22-796730	LongShore Strut 406 48-73 in / 122-185 cm	2
22-796360	LongShore Strut 610 72-116 in / 183-295 cm	2
22-796342	LongShore 235 Extension 24 in / 61 cm	2
22-796356	LongShore 435 Extension 48 in / 122 cm	2
22-796376	LongShore 635 Extension 67 in / 170 cm	2
22-000680	SPF Hooligan	1
22-796090	V Base	4
22-796270	Contour Base	4
22-796025	Multi-Base	4
22-890015	Non Slip Neoprene Pad	2
22-796P14	Double Headed Picket 40 in / 106cm	4
22-796C1H	Chain 20 ft / 6.1 m x 3/8 in, grade 100	2
22-890553	Ratchet Belt w/Finger Hook 27 ft / 8,2 m	6
22-796161	Tie Down Keys w/J Hook	4
22-796979	Chain Binder	2
22-88C00K	Cribbing Kit	1
22-796V02	VSK Controller	1



- Stabilize Everything from Small Vehicles, Large Commercial/ Municipal Vehicles, and Fully Loaded Tractor Trailers to Trains
- Ease of Use: No Pins, No Cables
- Extremely Safe and Secure: Paratech Struts Always Default to Locked Position
- Includes 4 Carrying Cases For Convenient Storage of Smaller Parts, Providing a Fast And Organized Way To Bring Everything You Need To The Scene
- Custom cut outs in cases to securely hold equipment in place
- Consistency and Organized Placement Of Components After Use
- Cases are Labeled with Contents



Rapid Extrication Kit

Combining the speed of Paratech's MULTIFORCE Air Lifting Bag with the flexibility of our Standard VSK, the Rapid Extrication Kit gets vehicles lifted and stabilized quicker than any other.

22-88DREK Rapid Extrication Kit
22-88DREDK Rapid Extrication Kit DIN

Weight 190.2 lb / 86,3 kg

Part No.	Description	Quantity
22-88D025K	Remote Placement MULTIFORCE Bag Kit	1
22-796200	AcmeThread Strut 25-36 in / 64-91 cm	2
22-796012	Strut Extension 12 in / 30 cm	2
22-796024	Strut Extension 24 in / 61 cm	2
22-796025	Multi-Base	2
22-796180C	Hinged Base 12 w/Anchor Ring	2
22-890553	Ratchet Belt 27' WLL 3300 lbs	4
22-796161	Tie Down Keys w/J Hook	2



Vehicle Stabilization Kits

Highway VSK

Doubling the capacity of the Standard VSK, this kit is designed for multiple vehicles, longer reach and heavier weights such as a fully loaded tractor trailer.

Maximum load up to 80,000 lb / 36,287 kg with a 4:1 safety factor



2 - Strut Extensions 12 in / 30 cm 22-796012



2 - Strut Extensions 24 in / 61 cm 22-796024



2 - Strut Extensions 36 in / 91 cm 22-796036



2 - AcmeThread Struts 25-36 in / 64-91 cm 22-796200



2 - AcmeThread Struts 37-58 in / 94-147 cm 22-796202

Kit Part No.	Net Weight:	lb	kg
22-796852		167.5	76.0

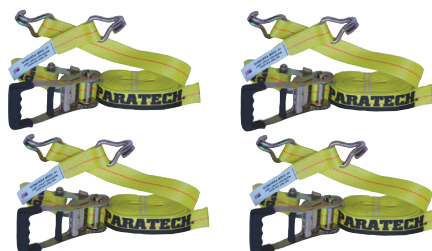
Part No.	Description	Quantity
22-796200	AcmeThread Strut 25-36 in / 64-91 cm	2
22-796202	AcmeThread Strut 37-58 in / 94-147 cm	2
22-796012	Strut Extension 12 in / 30 cm	2
22-796024	Strut Extension 24 in / 61 cm	2
22-796036	Strut Extension 36 in / 91 cm	2
22-796025	Multi-Base	4
22-796180C	Hinged Base w/Anchor Ring 12 in / 30 cm	4
22-890553	Ratchet Belt w/Finger Hook 27 ft / 8,2 m	4
22-796161	Tie Down Keys w/J Hook	4



4 - Hinged Base with Anchor Ring 12 in / 30 cm 22-796180C



4 - Tie Down Keys with J Hook 22-796161



4 - Ratchet Belt with Finger Hook 27 ft / 8,2 m 22-890553



4 - Multi-Base 22-796025



Interstate/Motorway VSK

The ultimate vehicle stabilization kit. There is no vehicle on the road, runway or track that this kit cannot stabilize. When your vehicular rescue needs the strongest system available, look no further.

Maximum load up to 120,000 lb / 54.431 kg
with a 4:1 safety factor



3 - LongShore Extension 235 24 in / 61 cm 22-796342



3 - LongShore Extension 435 48 in / 122 cm 22-796356



2 - LongShore Strut 304 36-50 in / 91-127 cm 22-796720



2 - LongShore Strut 406 48-73 in / 119-185 cm 22-796730



2 - LongShore Strut 610 72-116 in / 183-295 cm 22-796360



4 - Tie Down Keys with J Hook 22-796161



6 - Ratchet Belt with Finger Hook 27 ft / 8,2 m 22-890553



4 - Contour Base
22-796270



4 - V Base
22-796090



4 - Multi-Base
22-796025

Kit Part No.	Net Weight:	lb	kg
22-796855		438.2	198,0

Part No.	Description	Quantity
22-796720	LongShore Strut 304 36-50 in / 91-127 cm	2
22-796730	LongShore Strut 406 48-73 in / 122-185 cm	2
22-796360	LongShore Strut 610 72-116 in / 183-295 cm	2
22-796342	LongShore 235 Extension 24 in / 61 cm	3
22-796356	LongShore 435 Extension 48 in / 122 cm	3
22-796090	V Base	4
22-796270	Contour Base	4
22-796025	Multi-Base	4
22-796180C	Hinged Base Plate w/ Anchor Ring 12 in / 30 cm	6
22-796C1H	Chain 20 ft / 6.1 m x 3/8 in, grade 100	2
22-890553	Ratchet Belt w/Finger Hook 27 ft / 8,2 m	6
22-796161	Tie Down Keys w/J Hook	4
22-890015	Non Slip Neoprene Pad	2

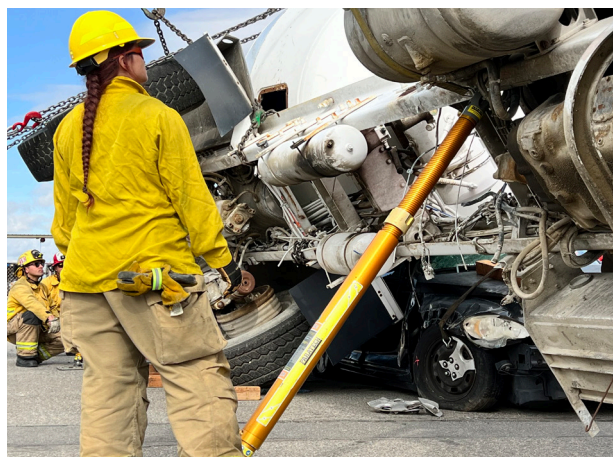


6 - Hinged Base with Anchor Ring 12 in / 30 cm 22-796180C



2 - Non Slip Neoprene
Pad
22-890015

2 - Chain 20 ft / 6.1 m x 3/8 in, grade 100 22-796C1H



MultiForce Air Lifting Bags



Paratech's MULTIFORCE Air Lifting Bag takes lifting to a whole new level. Integrating the latest technology with a unique understanding of lifting, Paratech has designed the MULTIFORCE Air Lifting Bag to exceed expectations. Ease of use and speed of deployment make the MULTIFORCE Air Lifting Bag an obvious choice whether the goal is saving lives or lifting locomotives. Paratech's patented design ensures that the high lift of this system can get into the tightest places possible, while the innovative remote lifting base keeps personnel safely away from the load when positioning the MULTIFORCE Air Lifting Bag. A dual stage feature keeps the load steady as the bag inflates so load drift is minimized and safety relief valves are integrated into the bag itself making over-inflation completely impossible. No mechanical coupling between air chambers means a stronger and safer lift. The remote lifting base doubles as a storage device keeping the bag safe and making it extremely easy to store.

HEAVY-DUTY RUBBER GRIPPING SURFACE

BUILT-IN INTERNAL RELIEF VALVE

DUAL STAGE LIFTING FEATURE KEEPS THE LOAD STABLE THROUGH THE LIFT

INTEGRATED HEAVY-DUTY WHEELS FOR EASY TRAVEL

DETACHABLE PLACEMENT HANDLE EXTENDS TO 50 IN / 127 CM

LIFT HEIGHT OF 26 IN / 66 CM

HIGH VISIBILITY CENTERING STRIPES

REMOTE PLACEMENT BASE ASSISTS WITH POSITIONING AND LIFTING STABILITY

SIDE HANDLES DESIGNED TO ACCEPT FINGER HOOKS OR LARGER

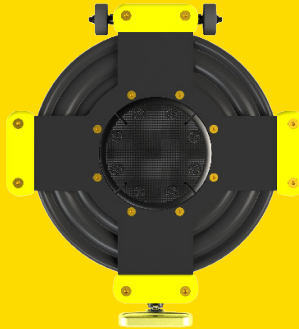
**CONFORMS TO EN13731-2007
MEETS NFPA 1960. 2024 ED
3RD PARTY CERTIFIED**

LIFT HEIGHT=	26 IN / 66 CM
LIFT CAPACITY=	37.2 TONS / 33,7 METRIC TONS
INSERTION HEIGHT=	4.5 IN / 11,4 CM
WEIGHT=(without placement device)	46.2 LBS / 21 KG
WEIGHT=(with placement device)	60.6 LBS / 27,5 KG
LENGTH=(without placement device)	23.75 IN / 60,33 CM
LENGTH=(with placement device)	30.71 in / 78 CM
WIDTH=(without placement device)	23.5 IN / 59,7 CM
WIDTH=(with placement device)	27.98 IN / 71,10 CM
SAFETY FACTOR=(with placement device)	4 TO 1
WORKING PRESSURE=	180 PSI / 14,5BAR



Part No.	Description	Net Weight	lb	kg
22-88D025-G3	Remote Placement MULTIFORCE G3		60.60	27,50
22-88D025K-G3	Remote Placement MULTIFORCE Bag Kit G3		75.44	32,22
22-88D025DK-G3	Remote Placement MULTIFORCE Bag Kit Din G3		75.44	32,22
22-88D025B-G3	Basic MULTIFORCE G3		54,17	24,57
22-88D025BKG3	Basic MULTIFORCE Bag Kit G3		69.01	31,30
22-88D025BDKG3	Basic MULTIFORCE Bag Kit Din G3		69.01	31,30
22-88D025CG3V	Compact MULTIFORCE G3		51.60	23,41
22-88D025CKG3	Compact MULTIFORCE Bag Kit G3		66.44	30,14
22-88D025CDKG3	Compact MULTIFORCE Bag Kit Din G3		66.44	30,14
22-890370K	Saddlebag Control Kit		14.84	6,73
22-890370DK	Saddlebag Control Kit Din		14.84	6,73
22-890370	Saddlebag Only		1.73	0,78

3 Kits to Fit Your Lifting Needs



Remote Placement MultiForce G3

The ultimate MULTIFORCE Bag. Comes with wheels for easy transport and telescoping pole for remote placement. There is nothing quicker or safer for lifting.

- 22-88D025G3 REMOTE PLACEMENT MULTIFORCE G3
- 22-88D025KG3 REMOTE PLACEMENT MULTIFORCE G3 BAG KIT (with saddlebag control kit)
- 22-88D025DG3K REMOTE PLACEMENT MULTIFORCE G3 BAG KIT DIN (with saddlebag control kit)

Basic MultiForce G3

Comes with a Full sized Placement Base with left and right handles, but without telescoping pole and wheels. Includes carrying strap with integrated air inlet protecting feature. Order this version if the safety of remote placement is not an option you need.

- 22-88D025BG3 BASIC MULTIFORCE BAG G3
- 22-88D025BG3K BASIC MULTIFORCE BAG KIT G3 (with saddlebag control kit)
- 22-88D025BDG3K BASIC MULTIFORCE BAG KIT DIN G3 (with saddlebag control kit)

Compact MultiForce G3

Comes with a reduced footprint for easier compartment storage on vehicles. Includes carrying strap with integrated air inlet protecting feature.

- 22-88D025CG3 COMPACT MULTIFORCE G3
- 22-88D025CG3K COMPACT MULTIFORCE BAG KIT G3 (with saddlebag control kit)
- 22-88D025CDG3K COMPACT MULTIFORCE BAG KIT DIN G3 (with saddlebag control kit)

MultiForce Positioning Lights

Includes two lights: one for replacing the left handle and one for the right handle. Direct retrofit. Each 300 lumen light operates off of 2 AA batteries with a "low battery" light indicator. Up to 2 hours of continued use. Made of aircraft grade aluminum and still completely functional as lifting handles. Each light can swivel to direct the light where you want it. Light It Up!

- 22-892150K MULTIFORCE Positioning Lights

	COMPACT	BASIC	REMOTE
LIFT HEIGHT=		26 IN / 66 CM	
LIFT CAPACITY=		37.2 TONS / 33,7 METRIC TONS	
INSERTION HEIGHT=		4.5 IN / 11.4 CM	
STORAGE HEIGHT=	4.88 IN / 12.39 CM	4.88 IN / 12.39 CM	6 IN / 15.3 CM
WEIGHT=(without placement device)		46.2 LBS / 21 KG	
WEIGHT=(with placement device)	51.6 LBS / 23.41 KG	54.17 LBS / 24.57 KG	60.6 LBS / 27.5 KG
LENGTH=(without placement device)		23.75 IN / 60.33 CM	
LENGTH=(with placement device)	24.46 IN / 62.13 CM	28.81 IN / 73.18 CM	30.71 IN / 78 CM
WIDTH=(without placement device)		23.5 IN / 59.7 CM	
WIDTH=(with placement device)	23.63 IN / 60.02 CM	27.98 IN / 71.07 CM	27.98 IN / 71.1 CM

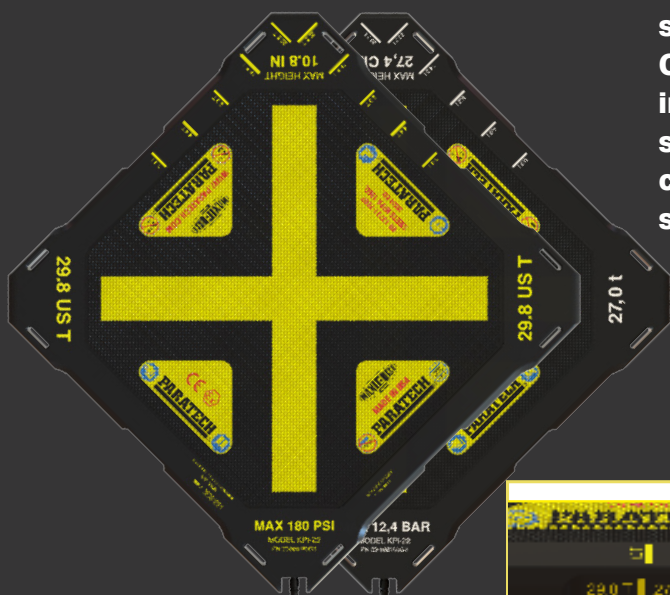
MaxiForce Air Lifting Bags



AIR LIFTING BAGS

MaxiForce® Has the Power To Lift or Shift Weights up to 106.7 tons

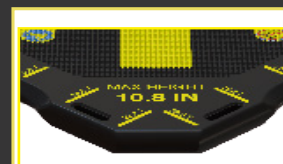
The MAXIFORCE® AIR LIFTING BAG is a thin, strong, molded envelope available in 14 different sizes. It is made from 3 layers of Neoprene covered Aramid fiber reinforcement and has the power to lift, move or shift weights up to 106.7 tons (96,8 metric tons) per bag. Control equipment and components play a critical role in successful lifting bag use and unlike other lifting bag systems, Paratech manufactures all of its major control components. This assures the quality of the lifting bag system from inflation to deflation.



Easy and Accurate Positioning



Recessed Air Inlet for Added Durability



High Visibility Markings

NEW!



Load Ruler

SIZES	14
SQUARE SIZES	9
RECTANGULAR SIZES	5
SIZES WITH EYELETS	10
SMALLEST LIFTING CAPACITY	1.6 TONS / 1,4 METRIC TON
LARGEST LIFTING CAPACITY	106.7 TONS / 96,8 METRIC TONS
WORKING PRESSURE	180 PSI / 12,4 BAR
3 LAYERS OF ARAMID REINFORCEMENT	ALL
INTERLOCKING SURFACE	ALL



What to Look for When Selecting a Lift Bag System

- 1. SAFETY:** MAXIFORCE® Air Lifting Bags are extremely tough, made of Neoprene, embedded with three (3) full layers of Aramid fiber reinforcement on each side, giving the bags tremendous strength at full inflation. Each Air Lifting Bag has been subjected to a stringent factory pressure test to assure maximum operator safety.
- 2. CAPACITY:** Does the height/weight capacity match the task? Non-emergency applications may only require one or two sizes. Emergency Service providers need a variety of lifting capacities.
- 3. SHAPE:** Match the shape of the bag to the contact area of the load to maximize your effectiveness. Use rectangular shaped bags against linear loads and when lifting on hills or inclines. Square bags are great for stacking on flat surfaces. Rescue crews should have both square and rectangular lifting bags.
- 4. THICKNESS:** The thinner the Lift Bag the better. The most notable feature of quality manufacturing is the ability to produce a thin, tough lifting bag. MAXIFORCE Air Lifting Bags range in thickness from 3/4 in(1,9 cm) to 1 in(2,5 cm).
- 5. MATERIAL:** Neoprene with Aramid reinforcement comprise most of the lift bag materials. These materials provide strength, durability, flexibility and chemical resistance. MAXIFORCE was the first Aramid reinforced high pressure Lift Bag.
- 6. SURFACE:** Small molded raised bumps provide an interlocking surface for stacking 2 lift bags. Once again MAXIFORCE was the first with an interlocking surface.
- 7. POSITIONING EYELETS:** At least 2 on all Lift Bags with a 12,9 ton rating or higher. A must for rescue work. Allows for vertical placement, safe retrieval and carrying.
- 8. MARKINGS:** Technical data is molded into the bag surface. Warnings are permanently labeled. The famous "X" marks the center of the load.
- 9. AIR INLET:** Brass with maximum pull strength. The inlet is threaded to receive a brass inflation nipple. Why brass? No corrosion. Easy to repair.
- 10. WORKS QUIETLY:** Completely silent in use. There are no engine sounds or loud mechanical noises when MAXIFORCE is used.

Man & Machine Kit

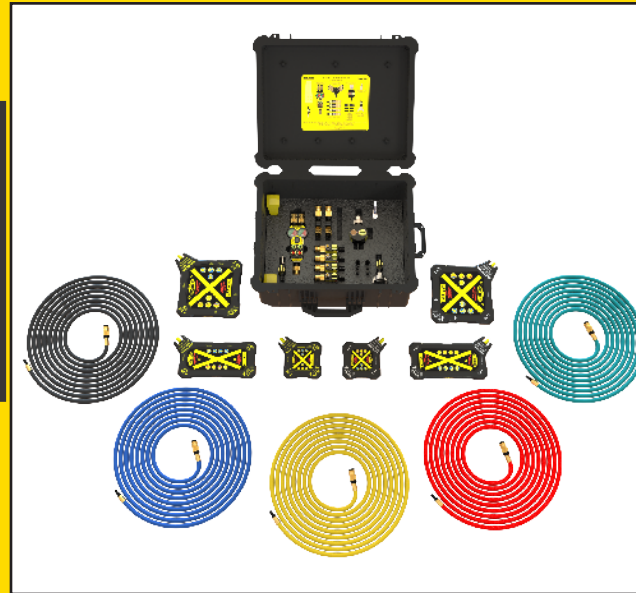
Paratech's man & machine kit covers areas of production, maintenance and rescue. The air lifting bags and control equipment (all contained in one convenient package) included in the kit are so versatile and easy to use that you will wonder what you did before you had them!

22-8903MM-180
22-8903MMD-12

Man and Machine Kit
Man and Machine Kit, DIN
Weight 63.2 lbs./ 28,7 kg

Kit Contents:

- Full compliment of control equipment, hoses & fittings
- 2 small rectangular bags 6 x 12 in/15,2cm x 30,5cm
- 2 larger square bags
- 10 x 10in/25,4cm x 25,4cm
- 2 small square bags
- 6 x 6in/15,2cm x 15,2cm
- Heavy duty rolling storage case
- 4 plastic felling wedges



Dual Deadman 180PSI/12,4BAR Controllers

This controller will 'go anywhere'. It is compact and extremely portable. Rescue personnel can crawl into collapse areas without hindrance. There are no protruding joysticks or cumbersome enclosures. The push-button design must be depressed for inflation or deflation. Color coded gauges make it easy to read. Relief valves and open couplings are built in the controller for maximum safety.



Compact Design

- Integrated Gauge Light
- Easy Operation
- Safety Couplings
- Fully Enclosed Gauges



Standards and Listings:

- National Coal Board (UK)
- NATO Stock Listings
- National Defense Supply Listing (US)
- Department of Industrial Relations (AU)
- Board of Mine Safety (SA)
- Japan Standards Institute (JA)
- GSA Contract Item (US)
- EN 13731 Air Bags For Fire Brigades
- MEETS NFPA 1960, 2024 ED
- ATEX

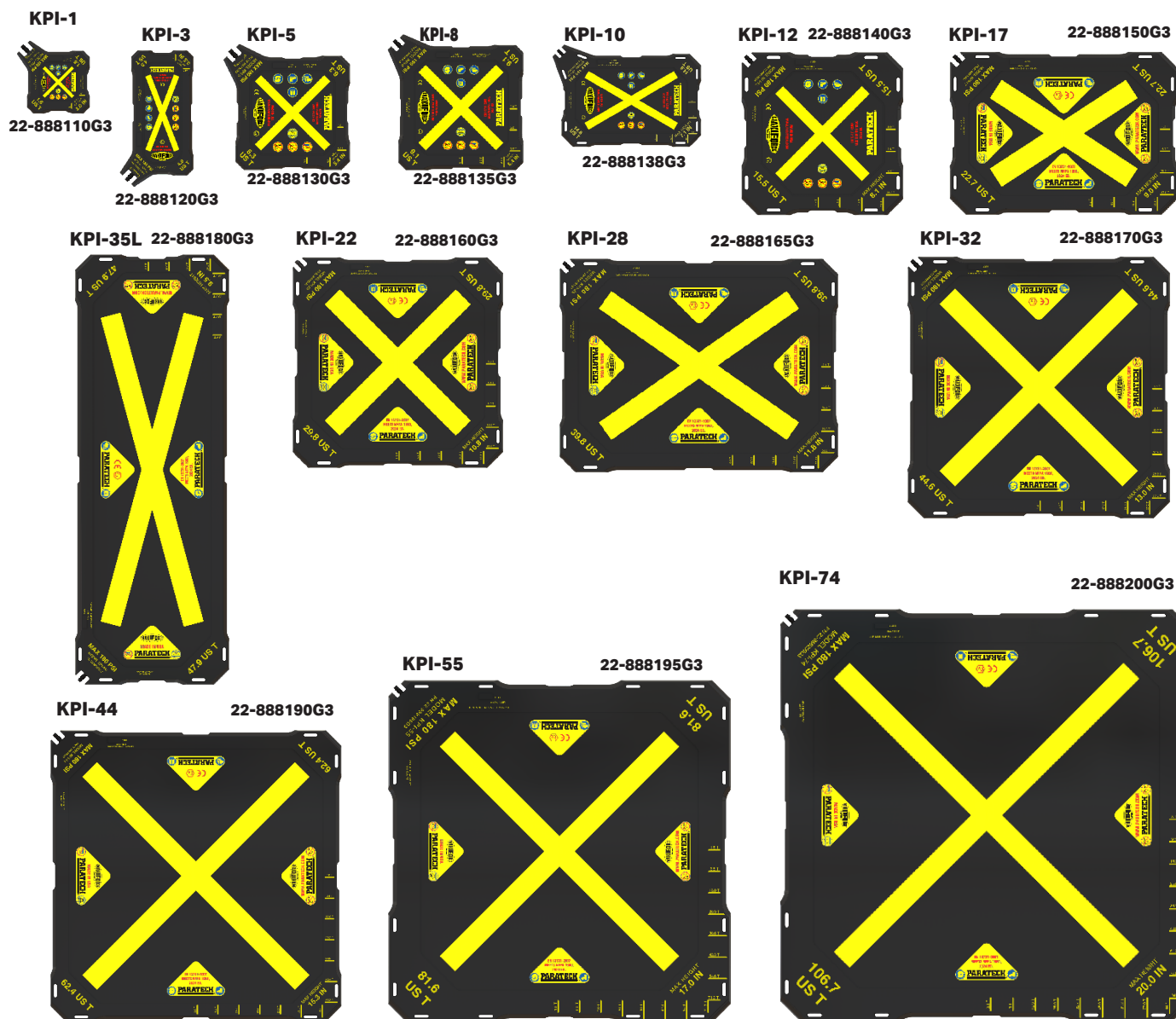


Preset Pressure Regulator

Same Precision Functionality, Now with:

1. Increased durability
2. More compact size
3. Easier to use

MaxiForce Air Lifting Bags



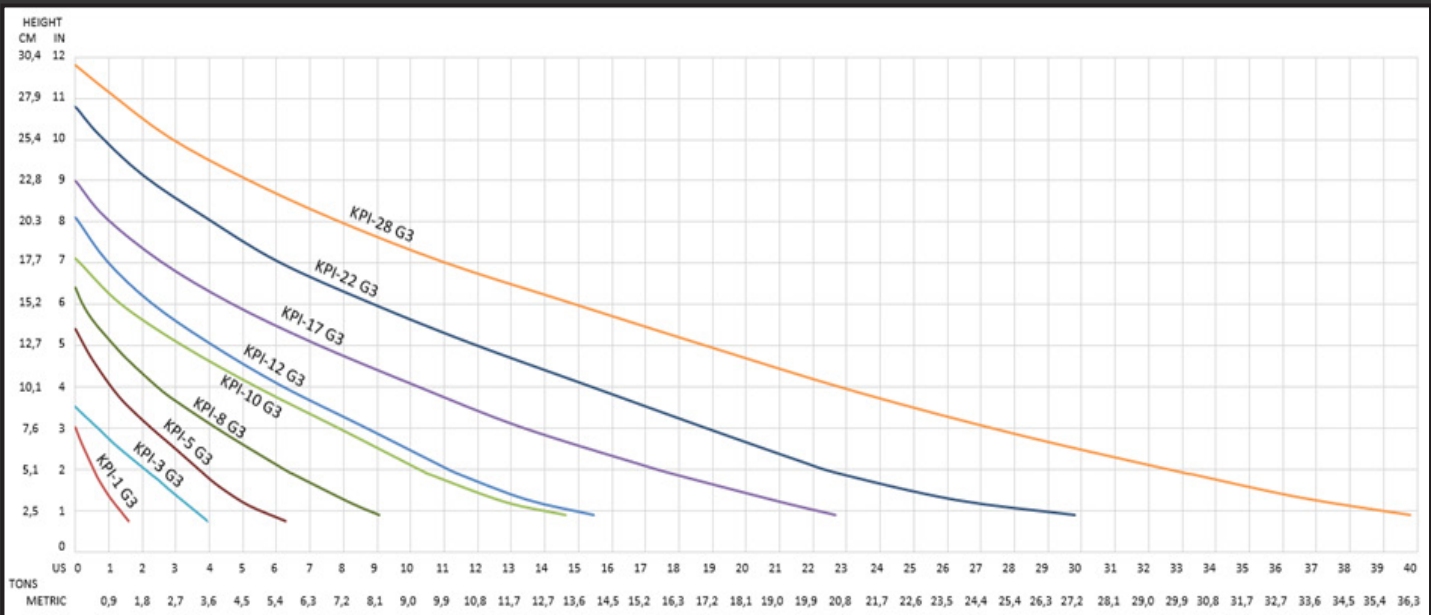
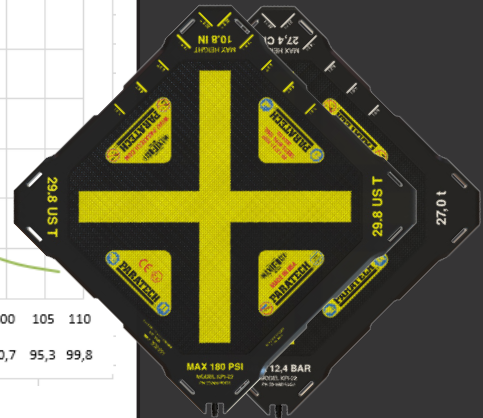
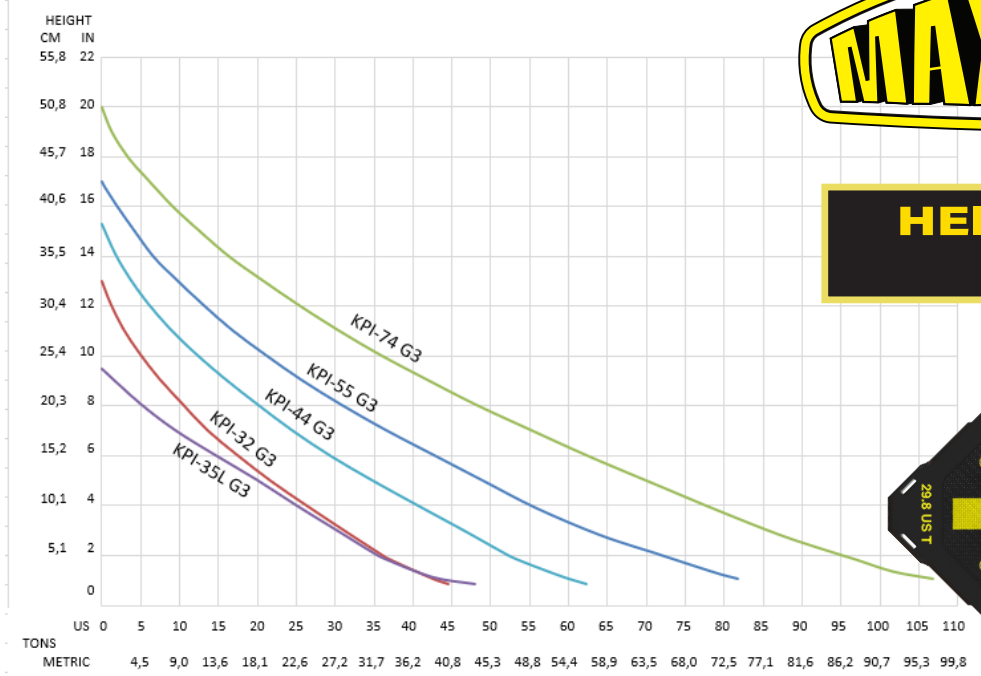
Part No.	Model	Dimensions in	Dimensions mm	Max Lifting Capacity US Ton / Met Ton	Max Lifting Height in / mm	Weight lb / kg
22-888110G3	KPI-1	6 in x 6 in x 3/4 in	152 mm x 152 mm x 19 mm	1.6 / 1,4	3.0 / 76	1.2 / 0,6
22-888120G3	KPI-3	6 in x 12 in x 3/4 in	152 mm x 305 mm x 19 mm	4.0 / 3,6	3.5 / 89	2.3 / 1,0
22-888130G3	KPI-5	10 in x 10 in x 3/4 in	254 mm x 254 mm x 19 mm	6.3 / 5,7	5.4 / 137	3.1 / 1,4
22-888135G3	KPI-8	12 in x 12 in x 7/8 in	305 mm x 305 mm x 22 mm	9.1 / 8,2	6.4 / 163	5.5 / 2,5
22-888138G3	KPI-10	12 in x 18 in x 7/8 in	305 mm x 457 mm x 22 mm	14.6 / 13,3	7.1 / 180	8.3 / 3,7
22-888140G3	KPI-12	15 in x 15 in x 7/8 in	381 mm x 381 mm x 22 mm	15.5 / 14,0	8.1 / 206	8.8 / 4,0
22-888150G3	KPI-17	15 in x 21 in x 7/8 in	381 mm x 533 mm x 22 mm	22.7 / 20,6	9.0 / 226	12.0 / 5,4
22-888160G3	KPI-22	20 in x 20 in x 7/8 in	508 mm x 508 mm x 22 mm	29.8 / 27,0	10.8 / 274	15.9 / 7,2
22-888165G3	KPI-28	20 in x 26 in x 7/8 in	508 mm x 660 mm x 22 mm	39.8 / 36,1	11.8 / 299	20.1 / 9,1
22-888170G3	KPI-32	24 in x 24 in x 7/8 in	610 mm x 610 mm x 22 mm	44.6 / 34,405	13.0 / 330	22.0 / 10,0
22-888180G3	KPI-35L	15 in x 42 in x 7/8 in	381 mm x 1066 mm x 22 mm	47.9 / 43,5	9.5 / 241	24.5 / 11,1
22-888190G3	KPI-44	28 in x 28 in x 7/8 in	711 mm x 711 mm x 22 mm	62.4 / 56,6	15.3 / 388	30.0 / 13,6
22-888195G3	KPI-55	32 in x 32 in x 1 in	812 mm x 812 mm x 28 mm	81.6 / 74,1	17.0 / 432	45.2 / 20,5
22-888200G3	KPI-74	37 in x 37 in x 1 in	939 mm x 939 mm x 28 mm	106.7 / 96,8	20.0 / 508	68.2 / 30,9

Lifting capacity and height will vary according to air pressure and bag contact area.

MaxiForce Air Lifting Bags



HEIGHT VS. LOAD CAPACITY



MaxiForce Air Lifting Bags

Pumper Kit, Light Duty, 3 bags

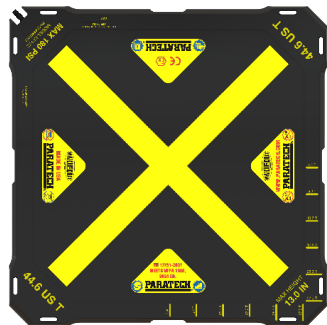
Part No.	Net Weight:	lb	kg
22-889610G3-180		54.1	24.5



KPI-17
22-888150G3
QTY: 1



KPI-28
22-888165G3
QTY: 1



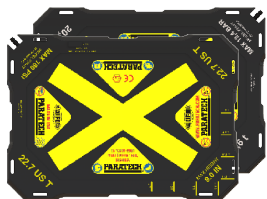
KPI-32
22-888170G3
QTY: 1

Engine kit, Light Duty, 5 Bags

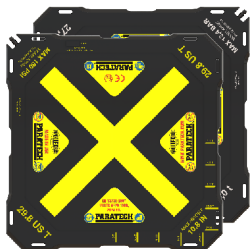
Part No.	Net Weight:	lb	kg
22-889620G3-180		58.1	26.4



KPI-2
22-888120G3
QTY: 1



KPI-17
22-888150G3
QTY: 2



KPI-22
22-888160G3
QTY: 2



Squad Kit, Light Duty, Man and Machine, 7 Bags



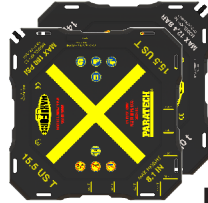
KPI-1
22-888110G3
QTY: 1



KPI-3
22-888120G3
QTY: 1



KPI-5
22-888130G3
QTY: 1



KPI-12
22-888140G3
QTY: 2



KPI-17
22-888150G3
QTY: 2



Part No.	Net Weight:	lb	kg
22-889650G3		147.5	66.9

Fire & Rescue Company Kit, Medium Duty, 13 Bags



KPI-1
22-888110G3
QTY: 1



KPI-3
22-888120G3
QTY: 1



KPI-5
22-888130G3
QTY: 1



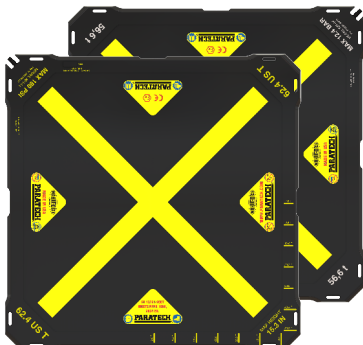
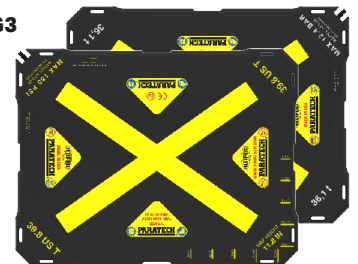
KPI-17
22-888150G3
QTY: 2

KPI-22
22-888160G3
QTY: 2

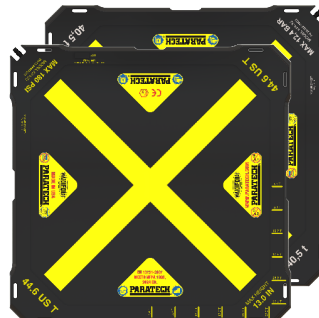


Part No.	Net Weight:	lb	kg
22-889660G3-180		206.6	93.7

KPI-28
22-888165G3
QTY: 2



KPI-44
22-888190G2
QTY: 2



KPI-32
22-888170G3
QTY: 2

MaxiForce Air Lifting Bags

Truck Kit, Medium Duty, Man and Machine, 6 Bags

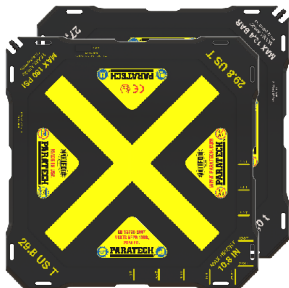
Part No.	Net Weight: lb	kg
22-889630G3-180	75.5	34.2



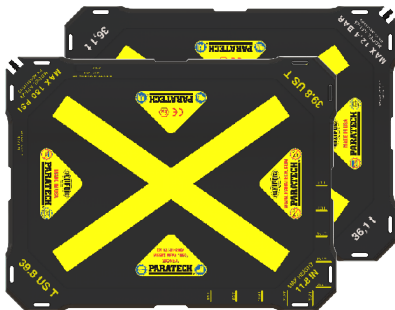
KPI-1
22-888110G3
QTY: 1



KPI-3
22-888120G3
QTY: 1



KPI-22
22-888160G3
QTY: 2



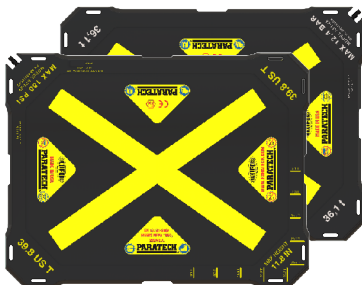
KPI-28
22-888165G3
QTY: 2

Truck Kit, Heavy Duty, 5 Bags

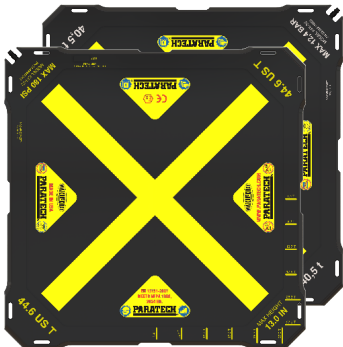
Part No.	Net Weight: lb	kg
22-889640G3	86.5	39.2



KPI-3
22-888120G3
QTY: 1



KPI-28
22-888165G3
QTY: 2



KPI-32
22-888170G3
QTY: 2



MaxiForce Air Lifting Bags

Light US&R, Heavy Duty, 15 Bags

Part No.	Net Weight: lb	kg
22-889670G3-180	307.0	139.0



**MASTER CONTROL
KIT CASES**
22-890322-180
QTY: 1

**DUAL DEADMAN
BAG CONTROLLER G3**
22-890900G3-180
QTY: 1



INLINE RELIEF VALVE
22-890490-180
QTY: 4



**PARATECH NIPPLE
AND LOCKING
TIRE CHUCK**
22-890731-180
QTY: 1



**"Y" with
2 COUPLINGS
and 1 NIPPLE**
22-890736-180
QTY: 3



**PRESET AIR LIFTING
BAG REGULATOR**
22-895401G3-180
QTY: 1

**SHUTOFF ADAPTER
NIPPLE WITH INDUSTRIAL
NIPPLE WITH VALVE**
22-890732-180
QTY: 1



**SHUTOFF ADAPTER
NIPPLE WITH TWIST LOCK**
22-890749-180
QTY: 1



AIR HOSE BLACK
3/8 in / 9,5 mm dia
x 16 ft / 5m
22-890513-180
QTY: 1



AIR HOSE BLUE
3/8 in / 9,5 mm dia
x 16 ft / 5m
22-890514-180
QTY: 1



**AIR HOSE
YELLOW**
3/8 in / 9,5 mm dia
x 16 ft / 5m
22-890515-180
QTY: 1



AIR HOSE RED
3/8 in / 9,5 mm dia
x 16 ft / 5m
22-890516-180
QTY: 1



AIR HOSE GREEN
3/8 in / 9,5 mm dia
x 16 ft / 5m
22-890517-180
QTY: 1



PARATECH NIPPLE
1/4 IN / 0,6 CM (NPT F)
22-890682-180
QTY: 2



**PARATECH NIPPLE
FOR ALB 7/16-24 RH THD**
22-890686-180
QTY: 3



**PARATECH NIPPLE
FOR ALB 7/16-24 LH THD**
22-890686-180
QTY: 1



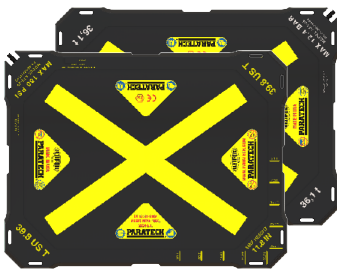
KPI-1
22-888110G3
QTY: 1



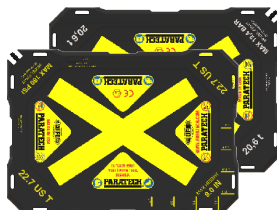
KPI-3
22-888120G3
QTY: 1



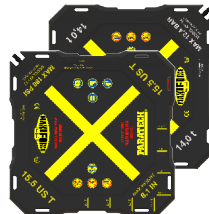
KPI-5
22-888130G3
QTY: 1



KPI-28
22-888165G3
QTY: 2



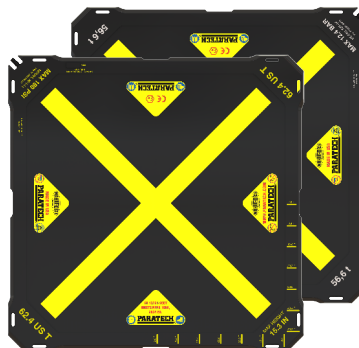
KPI-17
22-888150G3
QTY: 2



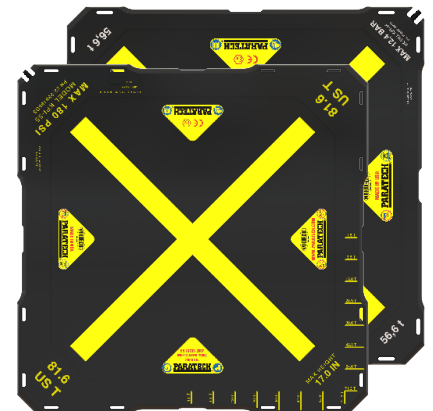
KPI-12
22-888140G3
QTY: 2



KPI-35L
22-888180G3
QTY: 2



KPI-44
22-888190G3
QTY: 2



KPI-55
22-888200G3
QTY: 2

MaxiForce Air Lifting Bags

USAR Kit, Heavy Duty, 24 bags

Part No. Net Weight: lb kg

22-889350G3-180 613.0 278,0



INLINE RELIEF VALVE
22-890490-180
QTY: 8



DUAL DEADMAN BAG CONTROLLER G3
22-890900G3-180
QTY: 2



PARATECH NIPPLE AND LOCKING TIRE CHUCK
22-890731-180
QTY: 2



"Y" with 2 COUPLINGS and 1 NIPPLE
22-890736-180
QTY: 4



MASTER CONTROL KIT CASES
22-890322-180
QTY: 2

SHUTOFF ADAPTER NIPPLE WITH INDUSTRIAL NIPPLE WITH VALVE
22-890732-180
QTY: 2



SHUTOFF ADAPTER NIPPLE WITH TWIST LOCK
22-890749-180
QTY: 2



AIR HOSE BLACK
3/8 in / 9,5 mm dia
x 16 ft / 5m
22-890513-180
QTY: 2



AIR HOSE BLUE
3/8 in / 9,5 mm dia
x 16 ft / 5m
22-890514-180
QTY: 2



AIR HOSE YELLOW
3/8 in / 9,5 mm dia
x 16 ft / 5m
22-890515-180
QTY: 2



AIR HOSE RED
3/8 in / 9,5 mm dia
x 16 ft / 5m
22-890516-180
QTY: 2



AIR HOSE GREEN
3/8 in / 9,5 mm dia
x 16 ft / 5m
22-890517-180
QTY: 2



PARATECH NIPPLE
1/4 IN / 0,6 CM (NPT F)
22-890682-180
QTY: 4



PARATECH NIPPLE FOR ALB 7/16-24 RH THD
22-890686-180
QTY: 6



PARATECH NIPPLE FOR ALB 7/16-24 LH THD
22-890686L-180
QTY: 2



KPI-1
22-888110G3
QTY: 2



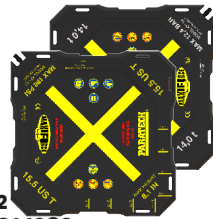
KPI-3
22-888120G3
QTY: 2



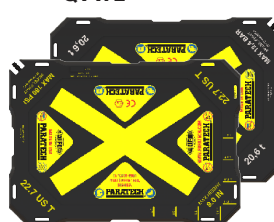
KPI-5
22-888130G3
QTY: 2



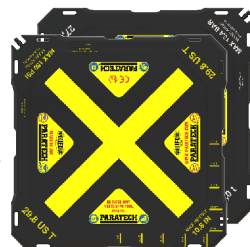
KPI-12
22-888140G3
QTY: 2



KPI-17
22-888150G3
QTY: 2



KPI-22
22-888160G3
QTY: 2

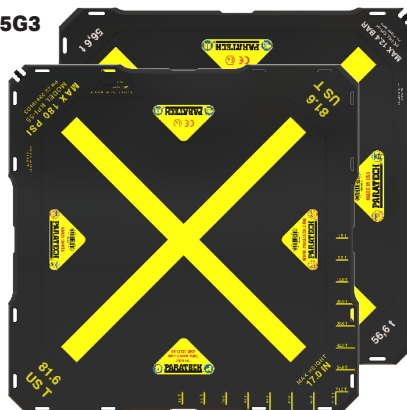


KPI-28
22-888165G3
QTY: 4

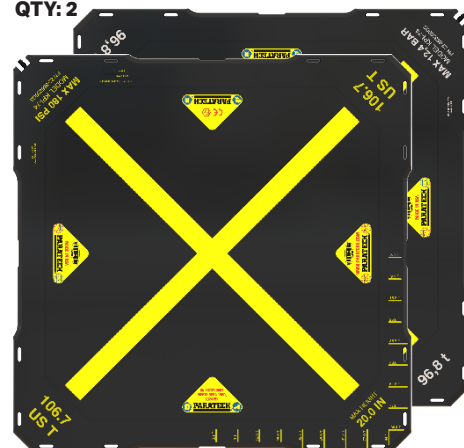


KPI-35L
22-888180G3
QTY: 2

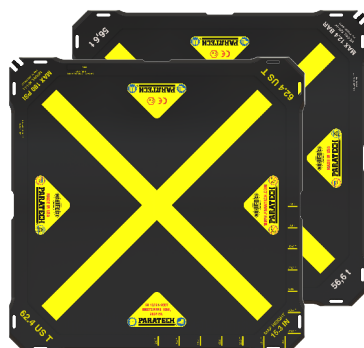
KPI-55
22-888195G3
QTY: 2



KPI-74
22-888200G3
QTY: 2



KPI-44
22-888190G3
QTY: 2



Master Control Kit



1 - Master Control Kit Case
22-890322-180

Part No.	Net Weight:	lb	kg
22-890300G3-180	US	44.0	19,9
22-890300G3D-12	Metric		

1 - Dual Deadman Bag Controller G3
22-890900G3-180



1 - Preset Air Lifting Bag Regulator
22-895401G3-180



4 - Inline Relief Valve 22-890490-180

1 - Paratech Nipple and Locking Tire Chuck
22-890731-180



3 - "Y" with 2 Couplings and 1 Nipple
22-890736-180



1 - Shutoff Adapter Nipple with Industrial Nipple with Valve
22-890732-180



1 - Shutoff Adapter Nipple with Twist Lock
22-890749-180



Paratech Nipple 1/4 in / 0.6 cm (NPT F)
22-890682-180
QTY: 1



Paratech Nipple for ALB 7/16-24 RH THD
22-890686-180
QTY: 3



Paratech Nipple for ALB 7/16-24 LH THD
22-890686L-180
QTY: 1



1 - Air Hose 3/8 in / 9.5 mm dia. x 16 ft / 5m Black
22-890513-180



1 - Air Hose 3/8 in / 9.5 mm dia. x 16 ft / 5m Blue
22-890514-180



1 - Air Hose 3/8 in / 9.5 mm dia. x 16 ft / 5m Yellow
22-890515-180



1 - Air Hose 3/8 in / 9.5 mm dia. x 16 ft / 5m Red
22-890516-180



1 - Air Hose 3/8 in / 9.5 mm dia. x 16 ft / 5m Green
22-890517-180

Quantity	Part No.	Description
1	22-890900G3-180	Dual Deadman Safety Relief & Control Valve
1	22-895401G3-180	Preset Air Lifting Bag Regulator 215 PSI CGS (14.8 bar) 5,500-0 psi / 379.2 -0 bar CGA 347/346 Inlet
4	22-890490-180	Inline Relief Valve
2	22-890682-180	Paratech Nipple 1/4 in / 0.6 cm NPT F
	22-890686-180	Paratech Nipple for ALB 7/16-24RH THD
1	22-890731-180	Paratech Nipple and Locking Tire Chuck
3	22-890686L-180	Paratech Nipple for ALB 7/16-24 LH THD

Quantity	Part No.	Description
1	22-890732	Shutoff Adapter Nipple with Industrial Nipple with Valve
3	22-890736	"Y" with 2 Couplings and 1 Nipple
1	22-890749	Shutoff Adapter Nipple with Twist Lock
1	22-890513-180	Air Hose 3/8 in / 9.5 mm dia. x 16 ft / 5 m BLACK
1	22-890514-180	Air Hose 3/8 in / 9.5 mm dia. x 16 ft / 5 m BLUE
1	22-890515-180	Air Hose 3/8 in / 9.5 mm dia. x 16 ft / 5 m YELLOW
1	22-890516-180	Air Hose 3/8 in / 9.5 mm dia. x 16 ft / 5 m RED
1	22-890517-180	Air Hose 3/8 in / 9.5 mm dia. x 16 ft / 5 m GREEN
1	22-890322-180	Master Control Kit Case

MaxiForce Air Lifting Bags

Basic Control Kit

**1 - Dual Deadman
Bag Controller G3
22-890900G3-180**



**1 - Preset Air Lifting Bag Regulator
22-895401G3-180**



Quantity	Part No.	Description
1	22-890900G3-180	Dual Deadman Safety Relief & Control Valve
1	22-895401G3-180	Preset Air Lifting Bag Regulator 215 PSI CGS (14,8 bar) 5,500 – 0 psi / 379.2 – 0 bar CGA 347/346 Inlet

Part No.	Net Weight:	lb	kg
22-890351G3-180 US		21.0	9,5
22-890351G3D-12 Metric			



**1 - Air Hose
3/8 in / 9.5 mm dia.
x 16 ft / 5 m Black
22-890513-180**



**1 - Air Hose
3/8 in / 9.5 mm dia.
x 16 ft / 5 m Yellow
22-890515-180**



**1 - Air Hose
3/8 in / 9.5 mm dia.
x 16 ft / 5 m Red
22-890516-180**

Quantity	Part No.	Description
1	22-890513-180	Air Hose 3/8 in / 9,5 mm dia. x 16 ft / 5 m BLACK
1	22-890515-180	Air Hose 3/8 in / 9,5 mm dia. x 16 ft / 5 m YELLOW
1	22-890516-180	Air Hose 3/8 in / 9,5 mm dia. x 16 ft / 5 m RED

Paratech Nipple with 3/8 in /
1 cm
Hose Stem with Ferrule

Vehicle Maintenance Kit

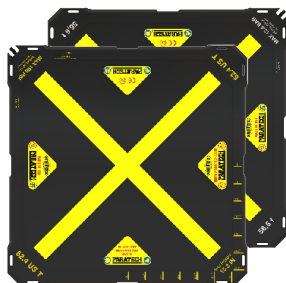
Part No.

22-889600G3-180

Quantity	Part No.	Model	Dimensions in	Dimensions mm	Max Lifting Capacity US Ton / Met Ton	Max Lifting Height in / mm	WEIGHT lb / kg
2	22-888190G3	KPI-44	28 in x 28 in x 7/8 in	711 mm x 711 mm x 22 mm	52.7 / 47,8	15.3 / 388	30.0 / 13,6

Quantity	Part No.	Description
2	22-890490-180	Inline Relief Valve
1	22-890900G3-180	Dual Deadman Safety Relief & Control Valve

Quantity	Part No.	Description
1	22-890513-180	Air Hose 3/8 in / 9,5 mm dia. x 16 ft / 5 m BLACK
1	22-890515-180	Air Hose 3/8 in / 9,5 mm dia. x 16 ft / 5 m YELLOW
1	22-890516-180	Air Hose 3/8 in / 9,5 mm dia. x 16 ft / 5 m RED



**KPI-44
22-888190G3
QTY: 2**



**1 - Dual Deadman
Bag Controller G3
22-890900G3-180**



**2 - Inline Relief Valve
22-890490-180**



**1 - Air Hose
3/8 in / 9,5 mm dia.
x 16 ft / 5 m Black
22-890513-180**



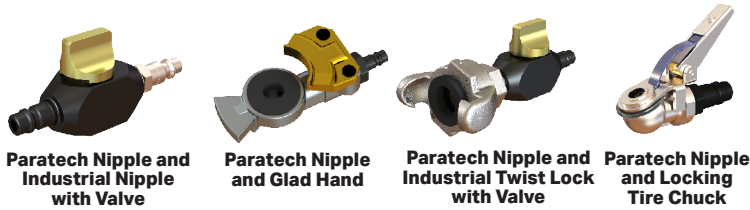
**1 - Air Hose
3/8 in / 9,5 mm dia.
x 16 ft / 5 m Yellow
22-890515-180**



**1 - Air Hose
3/8 in / 9,5 mm dia.
x 16 ft / 5 m Red
22-890516-180**

Paratech 24 Pneumatic Component & Adapter Kit

Part No.	Net Weight:	lb	kg
22-890729-180		15.0	6,8



Paratech Nipple and Industrial Nipple with Valve Paratech Nipple and Glad Hand Paratech Nipple and Industrial Twist Lock with Valve Paratech Nipple and Locking Tire Chuck



'Y' with 2 Paratech Couplings and 1/4 in NPT F 'Y' with 2 Paratech Couplings and MAXIFORCE® Nipple 'Y' with 3 Paratech Couplings Paratech Double Male Nipple



Paratech Nipple and Tire Valve Inflator Paratech Coupling with 3/8 in / 1 cm Hose Stem with Ferrule Paratech Nipple with 3/8 in / 1 cm Hose Stem with Ferrule Paratech Coupling with 1/4 in NPSM with 'O' Ring



Paratech Nipple with 3/8 in / 1 cm Hose Stem with Ferrule Paratech Nipple for ALB 7/16-24 LH THD Paratech Nipple for ALB 7/16-24 RH THD Paratech Coupling with 1/2 in NPT M



Paratech Coupling with 1/4 in NPT F Paratech Nipple with 1/4 in NPT F Paratech Coupling with 1/2 in NPT F Paratech Nipple with 1/2 in NPT F



Paratech Nipple with 1/2 in NPT M Paratech Nipple with 1/4 in NPT M Paratech Nipple and 12 in / 30.5 cm hose with clamp Storage Case

Quantity	Part No.	Description
1	22-890732-180	Paratech Nipple & Industrial Nipple with Valve
1	22-890734-180	Paratech Nipple & Glad Hand
1	22-890749-180	Paratech Nipple & Industrial Twist Lock with Valve
1	22-890731-180	Paratech Nipple & Locking Tire Chuck
1	22-890735-180	"Y" with 2 Paratech Couplings & 1/4 in NPT F
1	22-890736-180	"Y" with 2 Paratech Couplings & MAXIFORCE® Nipple
1	22-890740-180	"Y" with 3 Paratech Couplings
1	22-890730-180	Paratech Double Male Nipple
1	22-890737-180	Paratech Nipple and Tire Valve Inflator
1	22-890700V-180	Paratech Coupling with 3/8 in / 1 cm Hose Stem with Ferrule (consists of 22-890700A & 22-890624)
1	22-890691-180	Paratech Nipple with 3/8 in / 1 cm
	& 22-890624-180	Hose Stem with Ferrule
1	22-890721AV	Paratech Coupling with 1/4 in NPSM with "O" Ring
1	22-890624	Ferrule for Paratech Nipple with 3/8 in / 1 cm hose stem
1	22-890686-180	Paratech Nipple for ALB 7/16-24 LH THD
1	22-890686-180	Paratech Nipple for ALB 7/16-24 RH THD
1	22-890710V-180	Paratech Coupling with 1/2 in NPT M
1	22-890711-180	Paratech Coupling with 1/4 in NPT F
1	22-890682-180	Paratech Nipple with 1/4 in NPT F
1	22-890720V-180	Paratech Coupling with 1/2 in NPT F
1	22-890685-180	Paratech Nipple with 1/2 in NPT F
1	22-890684-180	Paratech Nipple with 1/2 in NPT M
1	22-890681-180	Paratech Nipple with 1/4 in NPT M
1	22-890738-180	Paratech Nipple & 12 in / 30.5 cm Hose with Clamp
1	22-000905	Storage Case

Ferrule for Paratech Nipple with 3/8 in / 1 cm hose stem
P N 22-890624

MaxiForce® Air Lifting Bag Safety Icons



MAXIMUM
OPERATING
PRESSURE



MAXIMUM
OPERATING
PRESSURE



DO NOT LIFT
SHARP
OBJECTS



READ
INSTRUCTIONS



WEAR SAFETY
GLOVES



WEAR HEAD
AND EYE
PROTECTION



WEAR SAFETY
FOOTWEAR



STACK TWO
LIFT BAGS

MaxiForce Air Lifting Bags

MaxiForce Accessories



**DUAL DEADMAN
BAG CONTROLLER G3**
Net Weight: 3.7lb 1,7kg
Part No. 22-890900G3-180



**INLINE RELIEF
VALVE FOR G3**
165 psi / 11,4 bar
Designed to relieve over-
pressurization and allow a lift bag
to remain inflated under a load.
This valve will relieve excess
pressure from an inflated
bag caused by load shifts or
temperature changes.
Net Weight: 1.0lb 0,4kg
Part No. 22-890490-180



**PRESET AIR LIFTING BAG
REGULATOR**
215 PSI CGA (14,8 BAR)
Piston Type 5,500-0 psi /
379,2-0 bar CGA 347/346 inlet
Net Weight: 3.6lb 1,6kg
Part No. 22-895401G3-180



PRESSURE REGULATOR
215 PSI DIN (14,8 BAR)
Piston Type Euro 5,500-0 psi /
379,2-0 bar DIN
Net Weight: 3.8lb 1,7kg
Part No. 22-895401DG3-12



**MASTER CONTROL CASE
ONLY**

Part No. 22-890322-180



**STORAGE
CASE**

Part No. 22-000905

AIR CONTROL CASE

Net Weight: 30.9lb 14kg
Optimal air distribution hub to
multiple rescue sites, securing reliable
constant airflow.
Part No. 22-895750-180
Part No. 22-895750D-12 (DIN)



NEOPRENE SHEET

20 in x 20 in x 1/8 in /
50,8 cm x 50,8 cm x 0,032 cm

Part No. 22-890466



MANUAL AIR COMPRESSOR 2 STAGE - FOOT/HAND

Net Weight: 14.7lb 6,7kg
Part No. 22-800400-180



MaxiForce Accessories



Ferrule for Paratech Nipple with 3/8 in / 1 cm hose stem
P N 22-890624



Nipple with 1/4 in NPT M fits MAXIFORCE® and Vetter
P N 22-890667



Locking Nipple with 1/8 in NPT M fits MAXIFORCE® G3 and Vetter
P N 22-890668



Paratech Lock Nipple with 3/8 in / 1 cm hose thread
P N 22-890672



Paratech Nipple for ALB 7/16-24 LH THD
P N 22-890686L-180



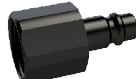
Paratech Nipple for ALB 7/16-24 RH THD
P N 22-890686-180



Paratech Nipple with 1/4 in NPT F
P N 22-890682-180



Paratech Nipple with 1/2 in NPT M
P N 22-22-890684-180



Paratech Nipple with 1/2 in NPT F
P N 22-890685-180



Locking Nipple with 3/8 in / 1 cm hose stem fits MAXIFORCE® G3 and Vetter
P N 22-890691-180



Locking Nipple with 7/16-24 LH MAXIFORCE® G3 and Vetter
P N 22-890652L-180



Paratech/Vetter Nipple 7/16-24 RH
P N 22-890652-180



Paratech Coupling with 3/8 in / 0.4 cm hose stem w/Ferrule - consists of 22-890700AV-180 & 22-890624
P N 22-890700V-180



Paratech Coupling with 3/8 in / 1 cm hose stem
P N 22-890700AV-180



Paratech Coupling with 1/2 in NPT M
P N 22-890710V-180



Paratech Coupling with 1/4 in NPT F
P N 22-890711V-180



Paratech Coupling with 1/2 in NPT F
P N 22-890720V-180



Paratech Coupling with 1/4 in NPSM with 'O' Ring
P N 22-890721AV-180



Paratech Coupling with 1/4 in NPSM open
P N 22-890703V-180



Paratech Double Male Nipple
P N 22-890730-180



Paratech Nipple Industrial Nipple with Valve
P N 22-890732-180



Paratech Nipple and Glad Hand
P N 22-890734-180



'Y' with 2 Paratech Couplings and 1/4 in NPT F
P N 22-890735-180



'Y' with 2 Paratech Couplings and MAXIFORCE® Nipple
P N 22-890736-180



'Y' with 3 Paratech Couplings
P N 22-890740-180



Paratech Nipple and Tire Valve Inflator
P N 22-890737-180



Paratech Nipple and Locking Tire Chuck
P N 22-890731-180



Paratech Nipple and 12 in / 30.5 cm hose with clamp
P N 22-890738-180



Paratech Nipple and Industrial Twist Lock with Valve
P N 22-890749-180



Industrial Coupling 1/4 in NPT F
P N 22-890751



Industrial Coupling 1/4 in NPT M
P N 22-890752



Industrial Nipple 1/8 in NPT M
P N 22-890760



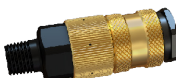
Industrial Nipple 1/4 in NPT M
P N 22-890761



Industrial Nipple 3/8 in NPT M
P N 22-890762



Industrial Nipple 3/8 in NPT M
P N 22-890763



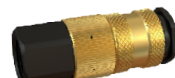
Paratech Coupling with 1/4 in NPT M open
P N 22-890704V-180



Paratech Coupling with 1/4 in NPT M
P N 22-890712V-180



Paratech Coupling with 3/8 in NPT M
P N 22-890714V-180



Paratech Coupling with 3/8 in NPT F
P N 22-890716V-180



Paratech Nipple with 1/4 in NPT M
P N 22-890681-180



Nipple (Strut Inlet) 1/8 in NPSM
P N 22-796065



Nipple (Strut Inlet) 1/8 in NPSM
P N 22-796065-180



Hose Splice 3/8 in / 9.5 mm dia. x 3/8 in / 9.5 mm dia.
P N 22-890673



Hose Stem 1/4 in NPT M with 3/8 in / 9.5 mm dia.
P N 22-890674



Hose Barb 1/4 in NPT F with 3/8 in / 9.5 mm dia.
P N 22-890675



Paratech Nipple with 3/8 in NPT F
P N 22-890777-180



Dual Tank Connector with Check Valves - CGA 346/347
Net Weight: 1.5lb / 0.68kg
P N 22-800130



Dual Tank Connector with Check Valves - DIN
Net Weight: 1.5lb / 0.68kg
P N 22-800135

MaxiForce Air Lifting Bags

MaxiForce Accessories



NIPPLE FOR ALB

Part No.

7/16-24 RH 890686-180

7/16-24 LH 890686L-180



NIPPLE PROTECTOR

Part No. 22-890709T



SWIVEL FITTING

Part Number: 22-890784-180

Weight: .46 lbs (208,6 g)



Air Hoses



A full 3/8 in / 9,5 mm inside diameter in a wide range of colors and lengths. Couplings and nipples are field replaceable using simple hand tools. Working pressure of 300 psi / 20,7 bar assures reliability. Hose stays flexible over the full operating temperature range of the lift bag. Closed couplings prevent air escape at disconnect (no blowing debris).

3/8 IN / 9,5 mm diameter

RED

YELLOW

GRAY

BLUE

BLACK

GREEN

16ft / 5m (2.5 lb / 1,1kg)	22-890516-180	22-890515-180	22-890518-180	22-890514-180	22-890513-180	22-890517-180
32ft / 10m (4.5 lb / 2,0kg)	22-890521-180	22-890520-180	22-890525-180	22-890523-180	22-890522-180	22-890524-180
50ft / 15m (7.0 lb / 3,2kg)	22-890541-180	22-890544-180	22-890545-180	22-890543-180	22-890546-180	22-890544-180

MaxiForce Air Lifting Bags



Rescue Air Cushions

Ideal Tool for High Lift Requirements of Non-Reinforced Broad Surfaces Found on Trucks, Vans & Light Aircraft.

Rescue Air Cushions are an ideal tool for high lift requirements of non-reinforced broad surfaces found on trucks, vans and light aircraft. Cushions are also used by collapse rescue teams to fill voids and regain support for Rescue Struts, wall braces and shoring. With a maximum lift height up to 40 inches (102 cm), Rescue Air Cushions are available in 4 sizes.

Paratech's Rescue Air Cushions are ready for a wide range of applications



Trailer Lift



Vehicle Lift

Rescue Air Cushions are available in 4 sizes for maximum versatility and a wide range of applications.

Typical Applications Include:

- Major vehicle accidents (cars, trucks, buses)
- Light aircraft recovery
- Filling voids created in trench collapse
- Small vehicle turnovers
- Downed or trapped animals
- Flotation device
- Industrial lifting applications

A soft footprint allows placement on soft and uneven terrain, with a contact area exceeding lifting height.

Constructed with a highly durable contact area, Rescue Air Cushions have neoprene coated exterior and interior reinforcement belts.

Rescue Air Cushions can be inflated using a variety of compressed air sources including industrial compressed air, compressed air storage cylinders, air brake systems and portable blowers.



Vehicle Lift



Trailer Lift

Safety And Operational Features:

- Pressure relief valves on cushions and control valve
- Interior reinforcing maintains flat lift surfaces for direction of lift force
- Quick connect couplings with locking ring
- Positioning handles
- Each cushion is factory tested at 1.3 times operating pressure
- Contact area diameter exceeds lifting height
- Operating pressure of 0-14.5 psi / 1.0 bar aramid reinforced

Advantages:

- Lifting heights from 17 in to 40 in / 43 cm to 102 cm
- Greater stability due to the size of the contact area
- Lighter loads have predictable lift results
- Full lift capacity over full lifting height
- Soft footprint allows placement on soft and uneven terrain
- User repairable for limited damage or punctures
- Four sizes to choose from

Ease of Operation:

Air Cushion inflation can be made from a variety of compressed air sources:

- Industrial compressed air
- Compressed air storage cylinders
- Air brake systems
- Portable blowers

Portable, hand held controller includes adjustable valves, gauges and pressure reliefs



Chinook Helicopter Lift

Rescue Air Cushions

Rescue Air Cushions



Part No.	Description	Diameter in / cm	Height Deflated in / cm	Height Inflated in / cm	Lift at Max Pressure lb / kg	Air Requirement cu ft / ltr	Weight Packed lb / kg
22-887005K	A/K Cushion 3.3 Ton (3,0 t)	24 / 61	2 / 5	17 / 43	6,560 / 2,976	10.4 / 295	35 / 15
22-887010K	B/K Cushion 5.1 Ton (4,7 t)	30 / 76	2 / 5	23 / 59	10,250 / 4,650	22.0 / 620	38 / 17
22-887015K	C/K Cushion 7.4 Ton (6,7 t)	36 / 91	2 / 5	24 / 61	14,761 / 6,697	31.6 / 895	50 / 22
22-887020K	D/K Cushion 13.7 Ton (11,9 t)	48 / 122	4 / 10	39.4 / 100	26,248 / 11,906	106.0 / 3,002	56 / 25

Rescue Air Cushions Kits

Each Rescue Air Cushion Kit consists of:

- Two Rescue Air Cushions with pressure reliefs
- A dual safety controller with quick connect couplings
- One length of 3/8 in / 9,5 mm diameter high pressure
- Hose with quick connect couplings 16 ft / 5m
- Two lengths of 1 in / 2,5 cm diameter low pressure
- Hose with quick connect couplings, 20 ft / 6 m
- Storage and carrying case
- Repair kit

6 Ton / 5.4 Metric Ton Lift Kit

Kit Part No.	Description	Net Weight:	lb	kg
22-887100KG	AK/6 Ton (5,4 t)		103.0	47,0

Part No.	Description	Quantity
22-887005K	A/K Cushion 3.3 Ton (3,0 t)	2
22-887006	A/K Cushion Carrying Case	1
22-887305G3	Dual Controller with gauges and safety relief valves 14.5 psi / 1 bar	1
22-887400	Air Hose 1 in / 25 mm dia. x 20 ft / 6 m RED	1
22-887401	Air Hose 1 in / 25 mm dia. x 20 ft / 6 m BLUE	1
22-890513	Air Hose 3/8 in / 9,5 mm dia. x 16 ft / 5 m BLACK	1

Regulator needed for kit operation



10 Ton / 9 Metric Ton Lift Kit

Kit Part No.	Description	Net Weight:	lb	kg
22-887102KG2	BK/10 Ton (9 t)		111.0	50,0

Part No.	Description	Quantity
22-887010K	B/K Cushion 5.1Ton (4,7 t)	2
22-887011	B/K Cushion Carrying Case	1
22-887305G3-180	Dual Controller with gauges and safety relief valves 14.5 psi / 1 bar	1
22-887400-180	Air Hose 1 in / 25 mm dia. x 20 ft / 6 m RED	1
22-887401-180	Air Hose 1 in / 25 mm dia. x 20 ft / 6 m BLUE	1
22-890513-180	Air Hose 3/8 in / 9,5 mm dia. x 16 ft / 5 m BLACK	1
22-887099K	Repair Kit	1

Regulator needed for kit operation



14 Ton / 12,7 Metric Ton Lift Kit

Kit Part No.	Description	Net Weight:	lb	kg
22-887104KG2	CK/14 Ton (12,7 t)		139.0	63,0

Part No	Description	Quantity
22-887015K	C/K Cushion 7.4 Ton (6,7 t)	2
22-887016	C/K Cushion Carrying Case	1
22-887305G3-180	Dual Controller with gauges and safety relief valves	1
22-887400-180	Air Hose 1 in / 25 mm dia. x 20 ft / 6 m RED	1
22-887401-180	Air Hose 1 in / 25 mm dia. x 20 ft / 6 m BLUE	1
22-890513-180	Air Hose 3/8 in / 9,5 mm dia. x 16 ft / 5 m BLACK	1
22-887099K	Repair Kit	1

Regulator needed for kit operation



26 Ton / 23,6 Metric Ton Lift Kit

Kit Part No.	Description	Net Weight:	lb	kg
22-887106KG	DK/26 Ton (23,6 t)		150.0	68,0

Part No.	Description	Quantity
22-887020K	D/K Cushion 13.7 Ton (11,9 t)	2
22-887021	D/K Cushion Carrying Case	1
22-887305G3	Dual Controller with gauges and safety relief valves 14.5 psi / 1 bar	1
22-887400-180	Air Hose 1 in / 25 mm dia. x 20 ft / 6 m RED	1
22-887401-180	Air Hose 1 in / 25 mm dia. x 20 ft / 6 m BLUE	1
22-890513-180	Air Hose 3/8 in / 9,5 mm dia. x 16 ft / 5 m BLACK	1
22-887099K	Repair Kit	1

Regulator needed for kit operation



Rescue Air Cushions Accessories



A/K CUSHION CARRYING CASE

PVC coated, toggle fastening

Net Weight: 2.4lb 1,1kg

Part No. 22-887006



B/K CUSHION CARRYING CASE

PVC coated, toggle fastening

Net Weight: 3.0lb 1,4kg

Part No. 22-887011



C/K CUSHION CARRYING CASE

PVC coated, toggle fastening

Net Weight: 4.3lb 2,0kg

Part No. 22-887016



D/K CUSHION CARRYING CASE

PVC coated, toggle fastening

Net Weight: 6.1lb 2,8kg

Part No. 22-887021



DUAL CONTROLLER WITH GAUGES & SAFETY RELIEF

14.5 psi / 1,0 bar

Net Weight: 4.2lb 1,9kg

Part No. 22-887305G3



AIR HOSE RED 1 in / 25 mm dia.

20 ft / 6 m

Net Weight: 11.0lb 5,0kg

Part No. 22-887400

40 ft / 12 m

Net Weight: 22.0lb 10,0kg

Part No. 22-887405

60 ft / 18 m

Net Weight: 33.0lb 15,0kg

Part No. 22-887410



AIR HOSE BLUE 1 in / 25 mm dia.

20 ft / 6 m

Net Weight: 11.0lb 5,0kg

Part No. 22-887401

40 ft / 12 m

Net Weight: 22.0lb 10,0kg

Part No. 22-887406

60 ft / 18 m

Net Weight: 33.0lb 15,0kg

Part No. 22-887411



AIR HOSE BLACK 3/8 in / 9.6 dia.

16 ft / 5 m

Net Weight: 2.0lb 0,9kg

Part No. 22-890513-180



PRESET REGULATOR 215 PSI CGA (14.8 BAR)

Piston Type 5,500-0 psi / 379,2-0 bar CGA 347/346 inlet

Net Weight: 3.6lb 1,6kg

Part No. 22-895401G3-180



INLINE RELIEF, SHUT OFF & HOSE ASSEMBLY 1 in / 2,5 cm x 16 ft / 5 m

Net Weight: 13.5lb 6,1kg

14.5 PSI / 1.0 BAR RED HOSE

Part No. 22-887350

14.5 PSI / 1.0 BAR BLUE HOSE

Part No. 22-887352



REGULATOR G3

215 PSI DIN (14.8 BAR)

Piston Type Euro 5,500-0 psi / 379,2-0 bar DIN

Net Weight: 3.5lb 1,6kg

Part No. 22-895401DG3-12



ADAPTER NIPPLE

5/8 in / 1,6 cm nipple x 1.0 in / 2,5 cm hose

Net Weight: 0.2lb 0,1kg

Part No. 22-887460



QUICK CONNECT COUPLINGS

for 1 in / 2,5 cm hose

Net Weight: 0.6lb 0,3kg

Part No. 22-887450



REPAIR KIT / MEDIUM PRESSURE

Adhesive, assorted aramid/neoprene patches and 60 grit emory cloth

Net Weight: 0.4lb 0,2kg

Part No. 22-887099K



RAC Information		Medium Pressure			
TYPE		AK	BK	CK	DK
PART NUMBER		22-887005K	22-887010K	22-887015K	22-887020K
MAXIMUM LOAD	lb kg	6,560 2.976	10,252 4.650	14,764 6.697	26,248 11.906
LIFT HEIGHT	in cm	17 43	23 58	24 61	39.4 100
DIAMETER	in cm	24 61	30 76	36 91	48 122
AIR REQUIRED	cu ft ltrs	10.4 295	22 620	31.6 895	106 3,002
WEIGHT PACKAGED	lb kg	16	35 17	38 23	50 56 25
INSERT SPACE APPROXIMATELY	in cm	2 5	2 5	2 5	4 10
WORKING SURFACE	3 PLY NEOPRENE COATED BELT 0.2 in / 5 mm NOMINAL THICKNESS				
INFLATION PORT	MOLDED THREADED FITTING 1-1 / 6-12				
INLET NIPPLE	QUICK CONNECT W/THREADED LOCKING RING				
RESTRAINT WEBS	TWIN NYLON WEBS 1 in / 25 mm WIDE 2,399 lb / 1088 kg BREAKING STRAIN				
SIDE WALL	NEOPRENE COATED (BOTH SIDES) ARAMID FABRIC, KEVLAR REINFORCED				
BUILT IN RESET RELIEF VALVE	MOLDED, THREADED, SPRING LOADED SELF RESETTING AT 14.5 psi / 1,0 bar +/-10%				

Forcible Entry Tools

Forcible Entry Tools

Paratech offers a wide range of forcible entry tools. From the compact and lightweight personal entry tools to the all-purpose Hooligan tools to the PRT Kit, Paratech has every tool you need to break through any barrier.



Hooligan Comparisons

	SIZES	FINISH	APPLICATION
SPF (Single Piece Forged)	1	Nickel Plated	Rescue
Standard	4	Nickel Plated	Rescue
Light Weight	2	Nickel Plated	Rescue

Personal Tool Comparisons

	WEIGHT	LENGTH	APPLICATION
Pry-Axe	6.6 lbs / 3,0 kg	18.4 in / 46,7 cm	Rescue/Police/Military
Biel Tool	3.1 lbs / 1,4 kg	15 in / 38,1 cm	Rescue/Police/Military
TiTAN Crash Axe	2.5 lbs / 1,13 kg	15.7 in / 39,9 cm	Rescue/Police/Military

For more than 60 years Paratech has set the standard for high quality heavy-duty forcible entry tools. These tools are designed to pry, pound, puncture, twist and cut open or remove all types of barriers between emergency personnel and the life they are saving. From our popular full line of Hooligan Tools to our powerful Percussive Rescue Tool (PRT), to our compact & versatile Pry-Axe...Paratech has led the way in design and manufacturing of dependable and unstoppable forcible entry tools.



Hooligan Tool

Setting the standard of excellence for Halligan type tools, the heavy duty Paratech Hooligan tools have features such as a stress proof bar, lightweight aluminum handles with machine grooved hand grips and gently curved claws that maximize prying leverage.

Paratech also offers the SPF, a single piece forged Hooligan, a top choice by many.

Personal Entry Tools

Paratech offers 3 different types of personal forcible entry tools, the Pry-Axe, Biel Tool, and the TITAN Crash Axe. The Pry-Axe has an extendable claw to offer the powerful 'Slam & Ram' capability for quick and decisive entry in tight quarters. The claw can be removed and inserted into the keyway in the axe head for twisting leverage.



PRT Percussive Rescue Tool

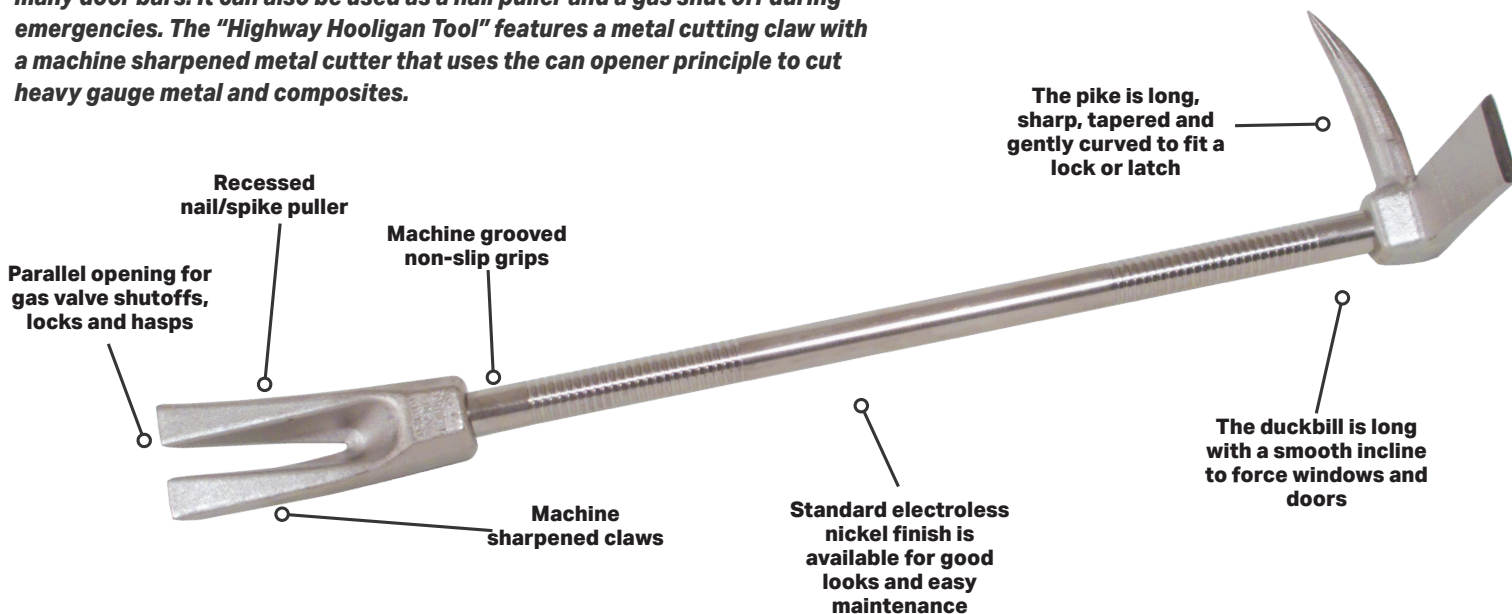
The PRT is a powerful hand held rescue tool that can be put to work with a minimal amount of training. The 'Slam & Ram' action of the PRT directs all of its force directly at the point of impact, without deflection, making it safer and more effective than a sledge and wedge.

Hooligan Tool

The Hooligan Tool is one of the world's most popular forcible entry tools. These heavy-duty tools were designed to pound, puncture, pry, twist, and cut all types of barriers encountered by emergency service personnel. The head and claw are forged from high alloy steel, heat treated for maximum strength, then fitted to a 1" (2,5 cm) stress proof bar. The bar has machine grooved non-slip grips. The Hooligan Tool features a claw that is gently curved for maximum prying leverage. The claw opening is parallel and fits over locks, hasps and many door bars. It can also be used as a nail puller and a gas shut off during emergencies. The "Highway Hooligan Tool" features a metal cutting claw with a machine sharpened metal cutter that uses the can opener principle to cut heavy gauge metal and composites.

Recommended Users

- Fire Departments
- Law Enforcement Agencies
- Rescue Squads
- Hazmat Teams
- Plant/Refinery Maintenance Crews
- Military and Public Utilities



Standard Claw:

Parallel opening for gas valve shutoffs, locks and hasps. Machine sharpened claws. Recessed nail puller. Claw radius for prying leverage.

Metal Cutting Claw:

Combines the capability of prying and metal cutting. Machine sharpened metal cutter uses can opener principle to cut heavy gauge metal and composites.

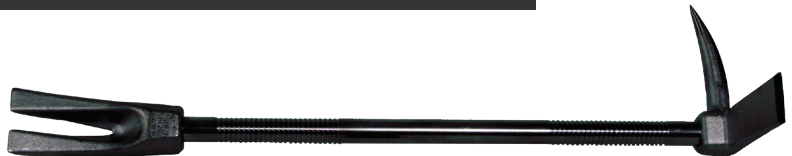


Hooligan Tool with Standard Claw Electroless Nickel Finish



Part No.	Description	Length:	in	cm	Net Weight:	lb	kg
22-000599	24 in / 61,0 cm Hooligan Tool		24.0	61,0		9.2	4,2
22-000600	30 in / 76,2 cm Hooligan Tool (pictured)		30.0	76,2		10.6	4,8
22-000601	36 in / 91,4 cm Hooligan Tool		36.0	91,4		11.9	5,4
22-000602	42 in / 106,7 cm Hooligan Tool		42.0	106,7		13.2	6,0

Tactical Hooligan Tool with Standard Claw



Part No.	Description	Length: in	cm	Net Weight:	lb	kg
22-000599T	Tactical Hooligan Tool	24.0	61,0		9.2	4,2
22-000600T	Tactical Hooligan Tool (pictured)	30.0	76,2		10.6	4,8
22-000601T	Tactical Hooligan Tool	36.0	91,4		11.9	5,4
22-000602T	Tactical Hooligan Tool	42.0	106,7		13.3	6,0

Hooligan Tool Lightweight Aluminum Handle and Standard Claw with Electroless Nickel Finish



Part No.	Description	Length:	in	cm	Net Weight:	lb	kg
22-000424	24 in / 61,0 cm Hooligan Tool - Lightweight (pictured)	24.0	61,0		6.8	3,1	
22-000430	30 in / 76,2 cm Hooligan Tool - Lightweight	30.0	76,2		7.3	3,3	

Forcible Entry Tools

Highway Hooligan With Metal Cutting Claw With Electroless Nickel Finish



Part No.	Description	Length:	in	cm	Net Weight:	lb	kg
22-000622	30 in / 76,2 cm Highway Hooligan Tool	30.0		76,2		10.6	4,8
22-000623	36 in / 91,4 cm Highway Hooligan Tool (pictured)	36.0		91,4		11.9	5,4
22-000624	42 in / 106,7 cm Highway Hooligan Tool	42.0		106,7		13.3	6,0

SPF Hooligan Single Piece Forged

Part No.	Description	Length:	in	cm	Net Weight:	lb	kg
22-000680	SPF Hooligan 30 in / 76,2 cm	30.0		76,2		9.7	4,4

The SPF Hooligan is a single piece forged (SPF) tool intended to exceed FDNY specifications for their primary hand held forcible entry tools. It is the very first redesigned, (features included) single piece Halligan type tool.

Features

- Single Piece, closed die
- Forging for absolute consistent lengths
- Recessed nail puller type claw, a thin curved profile
- Cable groove at the rear of the tool head
- Electroless nickel plating

Parallel opening for gas valve shut-offs, locks and hasps

Long, sharp, tapered and gently curved pike to break a lock or latch

Curved bill is long with a smooth incline to force windows and doors

Thinnest claw on the market designed for better wedging

Tactical SPF Hooligan Single Piece Forged

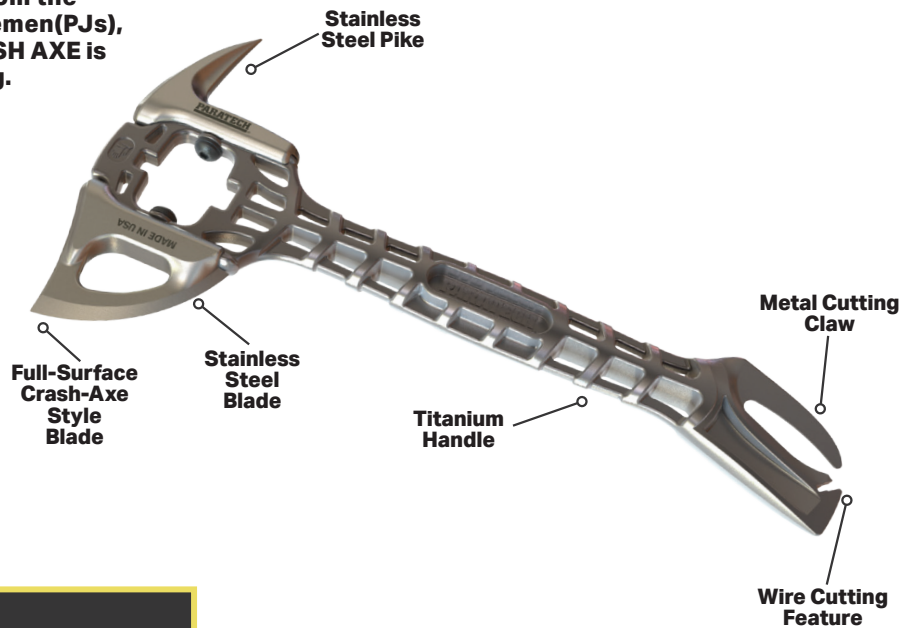


Part No.	Description	Length:	in	cm	Net Weight:	lb	kg
22-000680T	Tactical SPF Hooligan	30.0		76,2		9.7	4,4

Titan Crash Axe

Part No.	Description	Length:	in	cm	Net Weight:	lb	kg
22-000120	Crash Axe	15.69	39,87		2.5	1,13	

Paratech's **TITAN CRASH AXE** takes lightweight, multi-function rescue hand tools to the next level. Designed with input from the Air Force's Pararescuemen(PJs), Paratech's **TITAN CRASH AXE** is high-tech and low-drag.



Features

- Super Lightweight Titanium Handle
- Replaceable & Interchangeable Stainless Steel Blade and Pike
- Total weight of under 3 lbs.
- Large, Full-Surface Crash-Axe Style Blade
- Integrated Metal Cutting Claw with Wire Cutting feature
- "Future ready" for new blades, pikes, picks and more

STAINLESS
STEEL PIKE



ANGLED METAL
CUTTING CLAW



TiTan Crash Axe Blade
Length: 3.1 in 7,87 cm
Net Weight: 1.5 lb 0,68 kg
Part No. 22-000123



TiTan Crash Axe Pike
Length: 3.23 in 8,2 cm
Net Weight: 0.49 lb 0,22 kg
Part No. 22-000127



STAINLESS
STEEL TOPCUT
BLADE



INTEGRATED
WIRE CUTTER

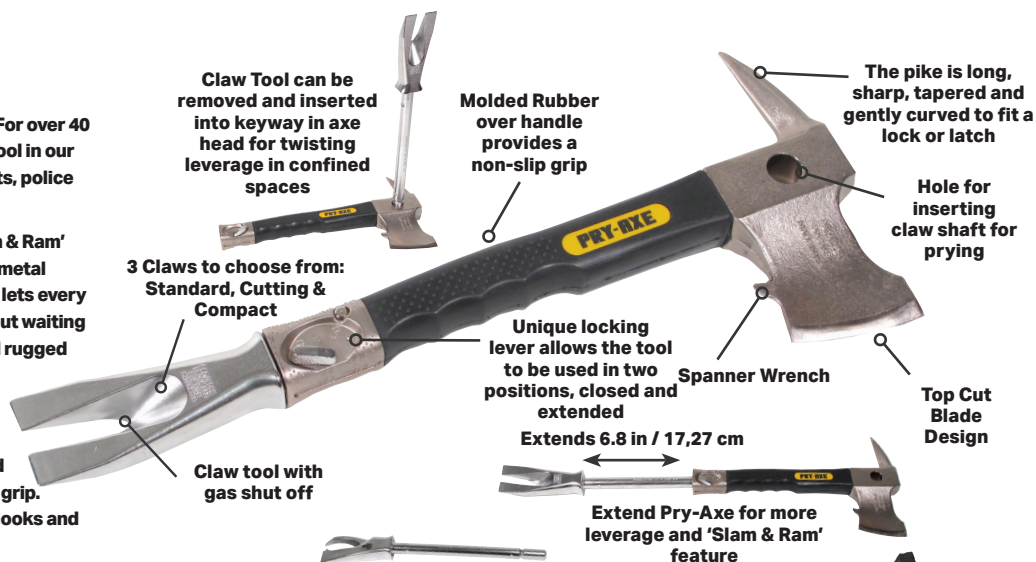
Forcible Entry Tools

Pry-Axe

Here is a tool that has withstood the test of time. For over 40 years the Pry-Axe has remained the best selling tool in our line. The Pry-Axe is being used by fire departments, police departments and rescue squads worldwide.

The Pry-Axe is a lightweight, multi-purpose, 'Slam & Ram' tool designed to pry, enlarge openings, cut sheet metal and twist off locks and latches. This efficient tool lets every firefighter force entry, rescue and ventilate without waiting for help. The Pry-Axe is small enough to carry and rugged enough for most jobs.

The Pry-Axe head and claw assemblies are separate sections forged from high alloy steel and heat treated for maximum strength. A molded rubber sleeve over the handle provides a non-slip grip. The Pry-Axe is electroless nickel plated for good looks and easy maintenance.



Pry-Axe with Metal Cutting Claw
Length: 18.4 in 46,7 cm
Net Weight: 6.6 lb 3,0 kg
Part No. 22-000522

Pry-Axe with Standard Claw
Length: 18.4 in 46,7 cm
Net Weight: 6.6 lb 3,0 kg
Part No. 22-000520

Pry-Axe with Standard & Metal Cutting Claw
Length: 18.4 in 46,7 cm
Net Weight: 9.6 lb 4,4 kg
Part No. 22-000518

Pry-Axe with Standard Claw & Sheath
Length: 18.4 in 46,7 cm
Net Weight: 6.8 lb 3,1 kg
Part No. 22-000515

Pry-Axe with Standard Claw & Vehicle Bracket
Length: 18.4 in 46,7 cm
Net Weight: 7.1 lb 3,2 kg
Part No. 22-000516

Replacement Pry-Axe Head
Length: 13.3 in 33,8 cm
Net Weight: 4.1 lb 1,9 kg
Part No. 22-000525

Standard Claw
Length: 15.1 in 38,4 cm
Net Weight: 2.5 lb 1,4 kg
Part No. 22-000322s

Pry-Axe Sheath
Length: 8.7 x 18.8 in 26,7 x 47,8 cm
Net Weight: 0.5 lb 0,5 kg
Part No. 22-000505

Vehicle Bracket
Length: 4.3 in 10,8 cm
Net Weight: 0.6 lb 0,3 kg
Part No. 22-000605

Compact Claw
Length: 13.25 in 33,66 cm
Net Weight: 2.13 lb ,97 kg
Part No. 22-000321

Metal Cutting Claw
Length: 15.1 in 38,4 cm
Net Weight: 2.45 lb 1,1 kg
Part No. 22-000324

Pry-Axe Holster
Length: 19.0 in 48,3 cm
Net Weight: 0.7 lb 0,3 kg
Part No. 22-000506

Biel Tool

Part No.	Length: in	cm	Net Weight:	lb	kg
22-000550	15.1	38,3		3.3	1,5

The Biel Tool is one piece made out of heat treated, electro-polished, stainless steel with an extremely durable ergonomically rubber molded handle. The Biel Tool incorporates many of the features found in the world famous Paratech 'Pry-Axe', but is much smaller and light enough to wear on a belt or carry in the pocket of a bunker coat. This is the perfect personal size multi-purpose forcible entry and rescue tool, designed for forcing doors and windows, prying and twisting hasps and locks, light overhauling, nail removal, gas shutoff, metal cutting and chopping.



Biel Tool and Sheath
Length: 15.1 in 38,3 cm
Net Weight: 3.4 lb 1,5 kg
Part No. 22-000551

Biel Sheath
Length: 7.3 in 18,5 cm
Net Weight: 0.1 lb 0,05 kg
Part No. 22-000555

Biel Holster
Length: 16.0 in 40,6 cm
Net Weight: 0.5 lb 0,24 kg
Part No. 22-000545

PRT Rescue Kit

Part No.	Description	Length:	in	cm	Net Weight:	lb	kg
22-000625	PRT Rescue Kit	31.5	80,0		29,0	13,2	

The PRT Rescue Kit includes a variety of interchangeable tool bits to penetrate most barriers.

'SLAM AND RAM'
Action of the PRT directs all of its force directly at the point of impact



The PRT is a powerful hand held rescue tool that can be put to work with a minimal amount of training. Primarily designed for fast, forcible entry, one person can quickly pry open locks and doors in seconds and easily break through brick and concrete block walls within a few minutes.

The 'Slam & Ram' action of the PRT directs all of its force directly at the point of impact - without deflection, making it safer and more effective than a sledge and wedge.

This heavy duty rescue tool is easily stored and transported, so it can always be... the first tool to the rescue.

PRT ACCESSORIES



Coupling required

PRT PIERCING APPLICATOR 6
6 in / 15.2 cm WALL PENETRATION
Overall length: 18.7 in / 47,5 cm
Net Weight: 5.12lb 2,32kg
Part No. 22-098106



Coupling required

PRT PIERCING APPLICATOR 14
14 in / 35.6 cm WALL PENETRATION
Overall length: 27.1 in / 69 cm
Net Weight: 6.24lb 2,83kg
Part No. 22-098114



1 1/2 in NH (NST) COUPLING
Part No. 22-550320
1 1/2 in NPSH (IPT) COUPLING
Part No. 22-550330
Length: 3.1 in 7,9 cm
Net Weight: 1.5 lb 0,7 kg



PRT Picket Driver Bit
Length: 8.8 in 22,4 cm
Net Weight: 1.5 lb 0,7 kg
Part No. 22-000634

Powered Impact

From Breaking Concrete, to Cutting the Remains of a Melted Tanker Shell Apart, it Delivers the Punch.

PAKHAMMER

At only 11.3 lb / 5,1 kg and at 1000-1100 high impact blows per minute this PIT dramatically increases the range of rescue work for initial responding units

PAKHAMMER SC

It is the ideal crash rescue tool weighing 19.8 lb / 8,9 kg and exceeds current U.S. Air Force requirements for handheld pneumatic aircraft skin penetrator

Made from S7 tool steel and heat treated for long life, all PIT kits come equipped with a wide variety of standard and specialized tool bits.

Powered Impact Tools

Paratech's Powered Impact Tools (PIT) are designed for forcible entry during fire fighting and rescue operations. They are used for cutting metal and composites, breaking masonry walls, penetrating concrete floors, forcible entry and digging during tunneling operations. Paratech's PITs consume air only on the power stroke. This unique, patented design provides a pneumatic impact and penetrating device with an adjustable power output and very low air consumption.



The combined features of light weight, very low air consumption and a wide range of power settings make Paratech's Pakhammer extremely effective for rescue and fire fighting operations. Rescue workers may find themselves temporarily blocked by a masonry wall or faced with the need to penetrate a concrete floor. Building collapse often requires power assisted digging for access to victims.



CRASH RESCUE FROM AIRCRAFT:
Cut skins, spars, canopies.

CRASH FIRE FIGHTING:
Piercing applicator for dispensing extinguishing agents.

EXTRICATION:
From automobiles, trucks, transportation accidents.

DISASTER RESCUE:
Earthquake, collapse.

PNEUMATIC IMPACT PENETRATOR:
Use in rescue or industry.

RESCUE/FORCIBLE ENTRY:
Break doors, locks, padlocks, hasps.

DAMAGE CONTROL:
Access to compartments through watertight doors, heavy sheet metal.

BREAKS AND PUNCHES HOLES:
Concrete, asphalt.

Conventional pneumatic, hydraulic or electric power tools always require a hook-up to a bulky remote power source. Only Paratech's Pakhammer is designed for situations where the power source must be as portable as the tool. Designed to operate intermittently for up to 15 minutes on a single SCBA cylinder, there is nothing to stop a Paratech Pakhammer from being where the action is.

The Pakhammer is designed to operate from any compressed air source at a pressure range of:
40 to 200 psi / 2.7 to 13,7 bar.

Powered Impact Tools

PakHammer Kit

Kit Part No.	Net Weight: lb	kg
22-550505	US 29.9	
22-550505D	Metric 13,6	

Part No.	Description	Quantity
22-550500G2	Pakhammer, with Inline Oiler	1
22-895400G3	Pressure Regulator 5,500-0 psi / 379,2-0 bar	1
22-890520	Air Hose 3/8 in / 9,5 mm dia. x 32 ft / 10 m YW	1
22-550582	Chisel S Bit	1
22-550584	Curved Metal Cutter Bit	1
22-550586	Bullpoint S Bit	1
22-550291	Oil, lubricating, 4 oz / 124 g	1
22-550094	Allen Wrench 7/32 in / 0,6 cm	1
22-550099	Allen Wrench 3/16 in / 0,5 cm	1
22-550096	Manual, Operating and Instruction	1
22-700235	Goggles, plastic safety	1
22-550380	Ballistic Nylon Carrying Case 29 x 11 x 13 in / 73,7 x 27,9 x 33 cm	1



A 1000–1100 high impact blows per minute, 11 pound impact tool that dramatically increases the range of forcible entry and rescue work initial responding units can handle without calling up heavy equipment. The Pakhammer is the only pneumatic impact tool of its size that is designed to operate from portable air cylinders. It is an ideal tool for bus and train rescue, high rise work, collapse rescue or any situation that requires a powerful impact tool that operates from a limited air supply.

Pakhammer Kit Technical Data

Length (without bit)	27.6 in / 70,1 cm	Blows/Minute (approx.)	1000–1100
Weight (Pakhammer without bit)	11.3 lb / 5,1 kg	Kit Weight	29 lb / 13,6 kg
Air Pressure Range	40-200 psi / 2,7-13,7 bar	Shank Size	0.401 in / 1,0 cm
Air Consumption at 175 psi (12 bar)	18 SCFM / 510 l/min		

ARFF Grab and Go Kit

Kit Part No.	Net Weight: lb	kg
22-550ARFF	US 29.9	
22-550ARFFD	Metric 13,6	

Part No.	Description	Quantity
22-550500G2	Pakhammer, with Inline Oiler	1
22-895400G3-180	Pressure Regulator G3 5,500-0 psi / 379.2-0 bar	1
22-890547	Air Hose 3/8 in / 9,5 mm dia. x 8 ft / 10 m YELLOW	1
22-550251	Piercing Applicator - 14 14 in / 35,6 cm	1
22-550584	Curved Metal Cutter Bit	1
22-550273	Heavy Duty Metal Cutter Bit	1
22-550291	Oil, lubricating, 4 oz / 124 g	1
22-550094	Allen Wrench 7/32 in / 0.6 cm	1
22-550099	Allen Wrench 3/16 in / 0,5 cm	1
22-550591	Panel Cutter with Relief for Aircraft Windows Bit	1
22-550379	Ballistic Nylon Carrying Case 14"H x 34"L	1
22-550246	Neoprene Plug 4 in / 10,2 cm	2
	3/4 in-1.5 in / 1,9-3,8 cm Diameter	
22-550598	Plug Driver	1
22-550330	Coupling	1
22-550380A	Tool Bit Pouch	1



This multipurpose kit is designed to handle numerous functions in ARFF. Includes a cutting bit designed to cut aircraft windshields and canopies, a cutting bit to cut sheet metal, a plug driver bit and neoprene plugs for leak sealing, piercing nozzle that can penetrate the GLARE composite skin as well as, CFRP (Carbon Fiber Reinforced Plastic). The 14" Piercing nozzle can flow water or chemical firefighting agents like foam etc. to help put out fires. This Grab and Go kit also includes the Paratech Pakhammer, designed to use with a limited air supply, uses less air and hits harder than any other tool of its kind and can go much longer before an air change is needed. Other pieces of equipment in this versatile kit are an adjustable regulator that can operate the tool at a range of 40 psi to 200 psi.

ARFF Grab and Go Kit Technical Data

Length (Pakhammer without bit)	27.6 in / 70,1 cm	Blows/Minute (approx.)	1000–1100
Weight (Pakhammer without bit)	11.3 lb / 5,1 kg	Kit Weight	29 lb / 13,6 kg
Air Pressure Range	40-200 psi / 2,7-13,7 bar	Shank Size	0.401 in / 1,0 cm
Air Consumption at 175 psi (12 bar)	18 SCFM / 510 l/min		



Pakhammer SC Kit

Kit Part No.	Net Weight: lb kg	
22-550530	US	77.0
22-550530D	Metric	35.0

Part No.	Description	Quantity
22-550500G2	Pakhammer, with Inline Oiler	1
22-550536	Self-Contained Cylinder	1
22-550532	Self-Contained Clamps	2
22-895400G3	Pressure Regulator G3 5,500-0 psi / 379,2-0 bar	1
22-895310	Preset Pressure Regulator	1
22-890520	Air Hose 3/8 in / 9,5 mm dia. x 32 ft / 10 m YELLOW	1
22-550291	Air Tool Oil	1
22-550094	Allen Wrench 7/32 in / 0,6 cm	1
22-550099	Allen Wrench 3/16 in / 0,5 cm	1
22-550095	Manual, Operating and Instruction	1
22-700235	Goggles, plastic safety	1
22-550535	Self-Contained Carrying Case	1
22-550598	Driver for Neoprene Plug	1
22-550246	Neoprene Plug	1
22-550584	Curved Metal Cutter Bit	1
22-550594	Dual Cutter with Bullpoint Bit	1
22-550273	Heavy Duty Metal Cutter Bit	1
22-550586	Bullpoint-S Bit	1
22-550582	Chisel-S Bit	1
22-550590	Panel Cutter for Metals Bit	1
22-550591	Panel Cutter with Relief Bit	1
22-550595	Spade Bit	1
22-550241	Piercing Applicator-6	1
22-550251	Piercing Applicator-14	1
22-550320	Coupling, 1 1/2 in NH	1



The Pakhammer SC (Self Contained) is designed to exceed current U.S. Air Force requirements for an aircraft skin penetrator. It is an ideal crash rescue tool. Carrying its own limited air supply, a firefighter can rapidly insert several penetrator/applicator nozzles depending on the location and spread of fire or fuel. These penetrator/ applicator nozzles will flow water, AFFF solutions and Halon. When the self contained air supply is exhausted the air supply assembly can be quickly detached in favor of another air source. The firefighter now has the full benefit of a standard Pakhammer to continue rescue operations.

Pakhammer Bits



CURVED METAL CUTTER

10.25 in / 26 cm - 1.2 in / 3 cm wide
Net Weight: .6lb 0,3kg
22-550584



DUAL CUTTER

11 in / 27,9 cm
Net Weight: 1.0lb 0,5kg
22-550592



DUAL CUTTER WITH BULLPOINT

11 in / 27,9 cm
Net Weight: 1.0lb 0,5kg
22-550594



HEAVY DUTY METAL CUTTER

11 in / 27,9 cm - 0.5 in / 1,3 cm - depth of cut
Net Weight: 1.0lb 0,5kg
22-550273



LOCK BREAKER

11 in / 27,9 cm
Net Weight: 1.0lb 0,5kg
22-550596



BULLPOINT-S

14 in / 35,6 cm
Net Weight: 1.2lb 0,5kg
22-550586



BULLPOINT-L

20 in / 50,8 cm
Net Weight: 1.8lb 0,8kg
22-550588



CHISEL-S

14 in / 35,6 cm - 1.0 in / 2,5 cm wide
Net Weight: 1.3lb 0,6kg
22-550582



CHISEL-L

20 in / 50,8 cm - 1.0 in / 2,5 cm wide
Net Weight: 1.3lb 0,6kg
22-550583



PANEL CUTTER FOR METALS

8 in / 20,3 cm - 1.2 in / 3 cm deep
Net Weight: 0.8lb 0,4kg
22-550590



PANEL CUTTER WITH RELIEF FOR AIRCRAFT WINDOWS

8 in / 20,3 cm - 1.2 in / 3 cm deep
Net Weight: 0.8lb 0,4kg
22-550591



SPADE 3 IN / 7,6 CM WIDE

20 in / 50,8 cm
Net Weight: 1.3lb 0,6kg
22-550595



PIERCING APPLICATOR - 6

6 in / 15,2 cm WALL PENETRATION

Overall length: 17.8 in / 45,2 cm
Net Weight: 4.4lb 2,0kg
22-550241



PIERCING APPLICATOR - 14

14 in / 35,6 cm WALL PENETRATION

Overall length: 26.3 in / 66,7 cm
Net Weight: 5.5lb 2,5kg
22-550251



PIERCING APPLICATOR - 32

32 in / 81,28 cm WALL PENETRATION

Overall length: 44.3 in / 112,5 cm
Net Weight: 7.75lb 3,5kg
22-550261



PLUG DRIVER

Net Weight: 1.0lb 0,5kg
22-550598



NEOPRENE PLUG 4 in / 10,2 cm

LG 0.75 - 1.5 in / 1.9 - 3,8 cm DIA
For use with plug driver

Net Weight: 0.5lb 0,2kg
22-550246

Pakhammer With Inline Oiler

Net Weight: 11.1lb 5,0kg
22-550500G2



Pakhammer Cases and Accessories



**PAKHAMMER
BALLISTIC NYLON BAG**
29.0 x 11.0 x 13.0 in /
73,7 x 27,9 x 33,0 cm
Net Weight: 5.6lb 2,5kg
22-550380



**WATERPROOF
COMPOSITE CASE
FOR PAKHAMMER SC**
31.5 x 21.75 x 11.5 in /
80,0 x 55,2 x 29,2 cm
Net Weight: 31.5lb 14,3kg
22-550310



**PRESSURE
REGULATOR G3**
Piston Type 5,500-300 psi /
379,2-20,7 bar
Net Weight: 3.6lb 1,6kg
22-895400G3



**PRESSURE
REGULATOR G3**
Piston Type 5,500-300 psi /
379,2-20,7 bar DIN
Net Weight: 3.7lb 1,7kg
22-895400DG3



**SELF-CONTAINED
CYLINDER**
Net Weight: 5.0lb 2,2kg
22-550536



SELF-CONTAINED CLAMPS
Net Weight: 2.0lb 0,9kg
22-550532K



COUPLING
for piercing applicator
NH 5/8 in / 1 1/2 in
Net Weight: 1.5lb 0,7kg
22-550320
NPSH 5/8 in / 1 1/2 in
Net Weight: 1.5lb 0,7kg
22-550330



ALLEN WRENCH
7/32 in / 0,6 cm
Net Weight: 0.1lb 0,1kg
22-550094
3/16 in / 0,5 cm
Net Weight: 0.1lb 0,1kg
22-550099



AIR HOSE YELLOW
3/8 in / 9,6 mm dia. - 32 ft / 10 m
Net Weight: 4.5lb 2,1kg
22-890520



AIR TOOL OIL
Net Weight: 0.3lb 0,1kg
22-550291



GOGGLES PLASTIC SAFETY
Net Weight: 0.8lb 0,4kg
22-700235

Damage Control Systems

Damage Control System (DCS)

Direct Compression



I-Type, can be used vertically or horizontally and is the simplest and strongest as it is parallel to the load axis (see table).

Cross-Axial



H-Type, can be used vertically or horizontally and takes moderate pressure (see table) as the pressure acts perpendicular to the load axis.

Triangulation



K-Type, can be used vertically or horizontally and takes full pressure (see table) as the pressure acts parallel to the load axis.

The most important factor you get with Paratech's DCS is time! With incoming water comes increasing depth and with that, higher water pressure...one of the most unforgiving vicious cycles has begun. To break the cycle you need time...time to build shoring that can slow the incoming water enough for the pumps to keep up... The Paratech Damage Control System will provide that break.

The **Paratech Damage Control System (DCS)** brings maritime damage control shoring into the 21st century. Speed, strength, flexibility and capability are the hallmarks of Paratech's DCS. Everything about the system has been engineered to simplify the difficult task Damage Control Teams have to face in the harsh and often dangerous working environments they have to perform in. With the Paratech DCS you will achieve setup speeds never seen with any wood-based system. A standard K brace can be set and fitted within one minute by an experienced team. The system is very logical and user-friendly for unexperienced crew members as well. All components of Paratech's DCS are machined from aircraft grade aluminum for superior strength and hard-coat anodized for maximum salt-spray protection. Designed to last and perform, the DCS makes damage control shoring faster, safer and easier than ever before.

Shoring

Placing support against, beneath or above the damaged areas and preventing additional sagging, bulging and metal fatigue.

Length		Axial load 2:1	
Feet	cm	lb	kg
1'	30,5	44000	20000
2'	61,0	44000	20000
3'	91,4	44000	20000
4'	121,9	44000	20000
5'	152,4	44000	20000
6'	182,9	44000	20000
7'	213,4	44000	20000
8'	243,8	40000	18000
9'	274,3	32000	14500
10'	304,8	24000	11000
11'	335,3	20000	9000
12'	365,8	16000	7250
13'	396,2	14000	6250
14'	426,7	12000	5500
15'	457,2	9000	4000
16'	487,7	6000	2750

Damage Control Kit-A

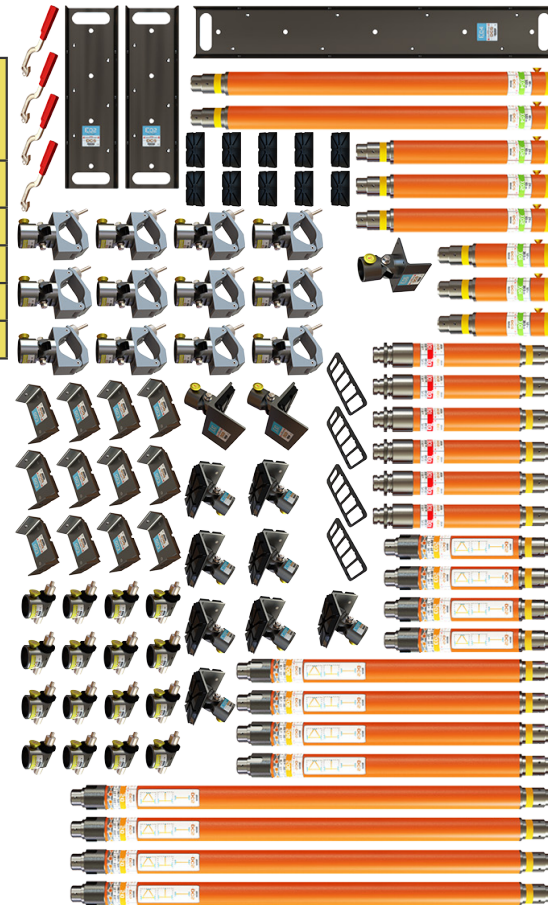
22-79800AK

The Damage Control Kit-A is designed for vessels larger than 260ft (80m), such as Frigates, Corvettes, Cruise ships and Tankers. *Multiple kits should be positioned.

Consisting of:

Qty	Part No.	Description
4	22-798S03	Damage Control Shore 03
4	22-798S06	Damage Control Shore 06
4	22-798S10	Damage Control Shore 10
6	22-798B01	Damage Control Brace 01
3	22-798X01	Damage Control Extension 01
3	22-798X02	Damage Control Extension 02
2	22-798X04	Damage Control Extension 04
12	22-798E00	Damage Control Rubber End
2	22-798E02	Damage Control Rail End 02
1	22-798E04	Damage Control Rail End 04
1	22-798E06	Damage Control Angled End
8	22-798E08	Damage Control Rubber Corner End
2	22-798E10	Damage Control Rubbered Angled End
16	22-798C10	Damage Control Latch Connector
12	22-798C20	Damage Control Clamp & Clevis Connector
10	22-798A00	Damage Control Rubber Pad
4	22-796689	Latch Holder
4	22-798027	Damage Control Spanner

# Of Decks	Qty Of Kit-A
6	3
10	4
12	4
14	6
16	8



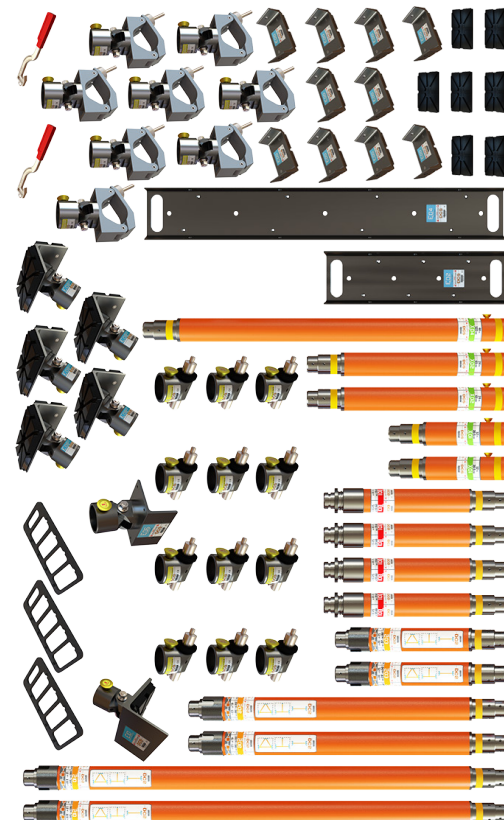
Damage Control Kit-B

22-79800BK

The Damage Control Kit-B is designed for vessels between 165ft (50m) and 260ft (80m), such as Minesweepers, Workboats and small Ferries. *Multiple kits should be positioned.

Qty	Part No.	Description
2	22-798S03	Damage Control Shore 03
2	22-798S06	Damage Control Shore 06
2	22-798S10	Damage Control Shore 10
2	22-798X01	Damage Control Extension 01
2	22-798X02	Damage Control Extension 02
1	22-798X04	Damage Control Extension 04
4	22-798B01	Damage Control Brace 01
10	22-798E00	Damage Control Rubber End
1	22-798E02	Damage Control Rail End 02
1	22-798E04	Damage Control Rail End 04
1	22-798E06	Damage Control Angled End
5	22-798E08	Damage Control Rubber Corner End
1	22-798E10	Damage Control Rubbered Angled End
12	22-798C10	Damage Control Latch Connector
8	22-798C20	Damage Control Clamp & Clevis Connector
3	22-796689	Latch Holder
2	22-798027	Damage Control Spanner
7	22-798A00	Damage Control Rubber Pad

# Of Decks	Qty Of Kit-B
2	2
6	3
10	4



Damage Control Systems

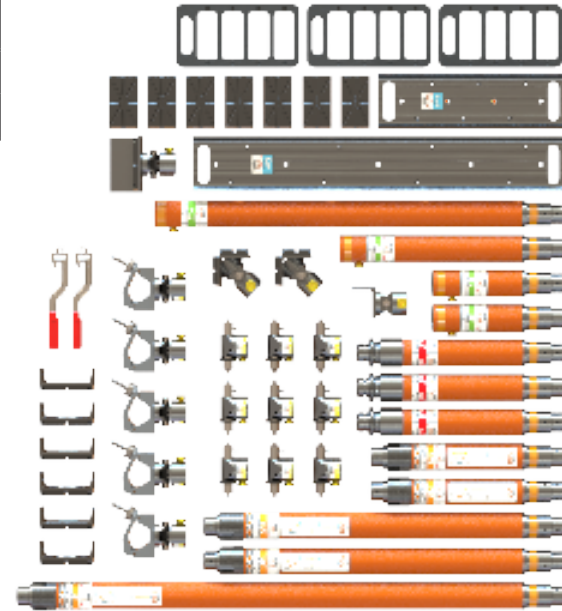
Damage Control Kit-C

22-79800CK

The Damage Control Kit-C is designed for vessels between 100ft (30m) and 200ft (60m), such as Patrol vessels and smaller Workboats. Multiple kits should be positioned.

Qty	Part No.	Description
2	22-798S03	Damage Control Shore 03
2	22-798S06	Damage Control Shore 06
1	22-798S10	Damage Control Shore 10
2	22-798X01	Damage Control Extension 01
1	22-798X02	Damage Control Extension 02
1	22-798X04	Damage Control Extension 04
3	22-798B01	Damage Control Brace 01
6	22-798E00	Damage Control Rubber End
1	22-798E02	Damage Control Rail End 02
1	22-798E04	Damage Control Rail End 04
1	22-798E06	Damage Control Angled End
2	22-798E08	Damage Control Rubber Corner End
1	22-798E10	Damage Control Rubber Angled End
9	22-798C10	Damage Control Latch Connector
5	22-798C20	Damage Control Clamp & Clevis Connector
3	22-796689	Latch Holder
2	22-798027	Damage Control Spanner
7	22-798A00	Damage Control Rubber Pad

# Of Decks	Qty Of Kit-C
2	1
6	2
10	3



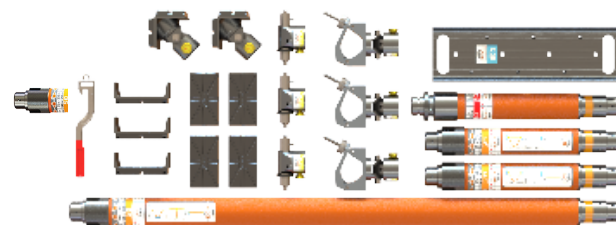
Damage Control Kit-D

22-79800DK

The Damage Control Kit-D is designed for smaller vessels under 100ft (30m).

Qty	Part No.	Description
2	22-798S03	Damage Control Shore 03
1	22-798S10	Damage Control Shore 10
1	22-798B01	Damage Control Brace 01
3	22-798E00	Damage Control Rubber End
1	22-798E02	Damage Control Rail End 02
2	22-798E08	Damage Control Rubber Corner End
3	22-798C10	Damage Control Latch Connector
3	22-798C20	Damage Control Clamp & Clevis Connector
1	22-798027	Damage Control Spanner
4	22-798A00	Damage Control Rubber Pad

# Of Decks	Qty Of Kit-D
2	1
6	2



Damage Control Shores

Damage Control Shores offer the end user the ability to manually extend the shore to desired length. The Damage Control Shore always defaults to a locked position.



Part No.	Description	Length: in/cm	Net Weight: lb kg		Ship Weight: lb kg	
22-798S03	Damage Control Shore 03	25-36 in/66-91 cm	13.7	6.2	14.7	6,7
22-798S06	Damage Control Shore 06	47-73 in/122-185 cm	26.0	11.8	27.0	12,3
22-798S10	Damage Control Shore 10	71-116 in/183-295 cm	39.3	17.8	40.3	18,3

Damage Control Extension

Paratech offers Damage Control Extensions in three sizes: 12" / 30,5 cm, 24" / 61 cm and 48" / 122 cm. Extensions are attached to the solid end of the shore.



Part No.	Description	Length: in/cm	Net Weight: lb kg		Ship Weight: lb kg	
22-798X01	Damage Control Extension 01	12 in/30,5 cm	6.3	2,9	7.3	3,3
22-798X02	Damage Control Extension 02	24 in/61 cm	9.4	4,3	10.4	4,8
22-798X04	Damage Control Extension 04	48 in/122 cm	15.4	7,0	16.4	7,4

Damage Control Brace

Greatly extend the flexibility and strength of your Paratech Damage Control System with a heavy duty brace



Part No.	Description	Length: in/cm	Net Weight: lb kg		Ship Weight: lb kg	
22-798B01	Damage Control Brace	26 in/66 cm	15.0	6,8	16.0	7,3

Damage Control Ends

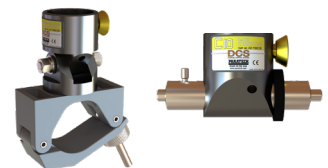
6 different ends in the system offer the possibility of making a variety of shores for Damage Control. The 4" Paratech Damage Control End should always be in one end of a shore used when flex in the hull is predicted.



Part No.	Description	Length: in/cm	Net Weight: lb kg		Ship Weight: lb kg	
22-798E00	Damage Control Rubber End	4 in / 10,2 cm	1.9	0,9	2.2	1,0
22-798E02	Damage Control Rail End 02	24 in / 61 cm	6.8	0,1	7.3	3,3
22-798E04	Damage Control Rail End 04	48 in / 122 cm	13.8	6,3	14.5	6,6
22-798E06	Damage Control Angled End	7.6 in / 19,3 cm	2.9	1,3	3.2	1,6
22-798E08	Damage Control Rubber Corner End	6.81 in / 17,3 cm	6.3	2,8	6.3	2,8
22-798E10	Damage Control Rubbered Angled End	9.25 in / 23,5 cm	5.4	2,4	5.7	2,6

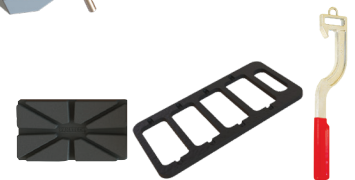
Damage Control Connectors

Part No.	Description	Net Weight: lb kg		Ship Weight: lb kg	
22-798C10	Damage Control Latch Connector 3,2	1.5	3.5	1.6	
22-798C20	Damage Control Clamp & Clevis Connector	6.6	3,0	6.9	3,1



Damage Control Accessories

Part No.	Description	Length: in/cm	Net Weight: lb kg		Ship Weight: lb kg	
22-798A00	Damage Control Rubber Pad	6.75 in/17,12 cm	.96	0,45	99	,45
22-796689	Latch Holder	15.0 in/38,1 cm	4.1	1,9	4.6	2,1
22-798027	Damage Control Spanner	13.23 in/33,60 cm	.55	0,25	.58	,26





Resources

United States Training Companies

**Advanced Rescue
Solutions**

**Rescue 4
Operations**

North Net Training

**Blue Collar
Training Network**

**Michigan Urban Search
and Rescue**

South Florida Rescue

TEEX

**Illinois Fire Service
Institute**

START Rescue

SPEC Solutions

International Training Companies

**SOCC
Canada**

**RS Rescue
Canada**

**Outreach
United Kingdom**

**IRRTC
United Kingdom**

**TRI
United Kingdom**

**Heavy Rescue
Germany**

Learn More



**Order the Paratech
Technical Rescue
Field Guide here!**





Ordering Terms, Conditions & Warranty

ORDERING WITH CREDIT CARD USING VISA, MASTER CARD AND AMERICAN EXPRESS ONLY:

We accept orders via mail, e-mail and fax. When ordering, be sure to include the item number and exact quantity of each item.

ORDERING BY PURCHASE ORDER: Orders from municipalities and fire protection districts will be re-directed to the appropriate Paratech Dealer. Terms are net 30 days with approved credit.

ORDER CONFIRMATION: Order Confirmations are sent via e-mail or fax. The confirmation is our understanding of your order requirements. Discrepancies between your order and the confirmation should be reported at once.

PRICING: All orders will ship with current pricing as indicated on your confirmation.

MINIMUM ORDER REQUIREMENT: Orders under 50.00 will assess an additional 25.00 fee for processing and handling.

FREIGHT (DOMESTIC TRUCK SHIPMENTS): F.O.B. our plant, Frankfort, IL, U.S.A. Special shipping instructions must be made at time of order. Charges will not appear on Order Confirmation.

FREIGHT (UPS or FedEx): Handling and Freight Charges will be added to invoice. Charges will not appear on order confirmation.

FREIGHT (INTERNATIONAL SHIPPING): EXW Paratech Inc. (815-469-3911) or Paratech Europe (+45-66-11-24-22). Contact Customer Service for special shipping instructions. Charges will not appear on Order Confirmation.

BACK ORDER POLICY: Due to unexpected demand, we may be temporarily out of stock on certain items. If you place an order for any merchandise that is currently not available, we will contact you regarding your order via phone or email. You will have the option of placing the order on hold or obtaining the "in-stock" items and receiving a 2nd shipment with the back-ordered items at a later date. Handling and freight will apply to the 2nd shipment.

RETURNING MERCHANDISE: Customer Service must authorize all returned merchandise in advance. Please contact the company for a Returned Goods Authorization Number (RGA#). Warranty replacements/returns for credit must go through the selling dealer. A minimum 15% restocking charge may apply.

WARRANTIES

Paratech Product Warranties:

- Rescue Support Systems / 5 years
- MAXIFORCE® Air Lifting Bags / 3 years
- MULTIFORCE® Air Lifting Bags / 3 years
- Powered Impact Tools / 1 year
- Rescue Air Cushions / 1 year
- Forcible Entry Tools / Limited Lifetime
- Damage Control Systems / 5 years



Our products are designed to be used in situations that often result in the saving of lives, the prevention or reduction of bodily injuries, the preservation of our environment, and the protection of property. Unfortunately, many of these incidents go unnoticed and are quickly forgotten.

Paratech would appreciate you taking a few moments to share these incidents with us by completing the Rescue Award application and filling out our online application at <https://www.paratech.us/submit-rescue-award>. We will send each active participant of your rescue our distinctive Rescue Award emblem and certificate. A separate award will be awarded in the name of the individual's unit.

The Rescue Awards we offer correspond to our main product groups:

- RSS - Rescue Support Systems
- MAXIFORCE® & MultiForce® - Air Lifting Bags
- RAC - Rescue Air Cushions
- PIT - Powered Impact Tools
- FET - Forcible Entry Tools
- DCS - Damage Control System

There is no limit to the amount of awards you may apply for.

Paratech hopes you will apply after each and every incident involving the successful use of a Paratech product. Each award application we receive is shared with our employees and will be posted on our website for the world to see your accomplishments using Paratech equipment. The awards you receive are a tremendous source of pride for all of us here at Paratech.

GO TO

[**www.paratech.us/submit-rescue-award**](https://www.paratech.us/submit-rescue-award)

Contacts

PARATECH USA & CUSTOMER SERVICE

Office: +1.815.469.3911

Fax: +1.815.469.7748

Email: paratech@paratech.com

PARATECH EUROPE & CUSTOMER SERVICE

Office: +45 66 11 24 22

Fax: +45 66 11 24 32

Email: paratech@paratech.eu

Chief Sales Officer

HANS FRANK NORMOLLE

Mobile: +1.815.277.6810

HFNormolle@paratech.com

Training Manager

NIGEL LETHERBY

Mobile: +1.815.325.1886

NLetherby@paratech.com

US / Canada Sales Team

TOM GAVIN

National Sales Manager

Mobile: +1.732.539.4147

TGavin@paratech.com

CHRIS FRAMSTED

Regional Sales Manager

AL, AR, FL, GA, LA, MS, OK, TN, TX

Mobile: +1.770.633.2997

CFramsted@paratech.com

ALEX KRECHOWICZ

Regional Sales Manager

Eastern Canada

Mobile: +1.905.999.8892

AKrechowicz@paratech.com

JAMES KOLACZKOWSKI

Regional Sales Manager

IN, KY, MI, OH, WI, IA, IL KS, MN,

MO, ND, NE, SD, WV

Mobile: +1.336.406.9773

JKolaczkowski@paratech.com

ROBERT O'DONALD

Regional Sales Manager

CT, DE, MA, MD, ME, NC, NH, NJ,

NY, PA, RI, SC, VA, VT

Mobile: +1.843.814.9515

ROdonald@paratech.com

MICHAEL WEISS

Regional Sales Manager

Canada - AB & BC

Mobile: +1.780.222.1276

MWeiss@paratech.com

MIKE ULIBARRI

Regional Sales Manager

AZ, AK, CA, CO, HI, ID, MT,

NM, NV, OR, UT, WA, WY

Mobile: +1.702.994.4503

MUlibarri@paratech.com

International Sales Team

DANIEL WITTE

Regional Sales Manager

Northern Europe

Int'l. Mobile: +49 17 66 34 37334

DWitte@paratech.com

FRANCESCO ROSSETTI

Regional Sales Manager

Africa, Southern Europe

Int'l. Mobile: +44 79 12 31 84 61

FRossetti@paratech.com

NITIN SHINDE

Middle East, Australia

Int'l. Mobile: +91 99206 64489

NShinde@paratech.com

SEBASTIÁN FERNÁNDEZ

Regional Sales Manager

South America, Mexico, Central America

Int'l. Mobile: +56 9 6190 8542

SFernandez@paratech.com

THOMAS PETERSEN

Operations Manager, Europe

Regional Sales Scandinavia

Office: +45 6611 2422

Int'l. Mobile: +45 2940 8320

tpetersen@paratech.com

ERIC JIN WOO KIM

Regional Sales Manager
NE Asia

Office: +1.815.469.3911

Mobile: +82 10 8713 3193

WeChat: Paratech_Inc

EJWKim@paratech.com

Made in the USA and Used WORLDWIDE.



Locations

Paratech Headquarters

P.O. Box 1000 Frankfort, IL 60423 USA
Phone: +1.815.469.3911
Fax: +1.815.469.7748
Toll Free: +1.800.435.9358
Email: paratech@paratech.com

Paratech Europe

Landbrugsvej 10 N, 5260 Odense S,
Denmark
Phone: +45 66 11 24 22
Fax: +45 66 11 24 32
Email: paratech@paratech.eu

**We take our job
seriously because
we know your job
is often a matter of
life or death.**

**For more information,
Call**

800.435.9358

Or visit

www.paratech.com